

grinding and control vices, type PLF

Operated with hexagon socket key

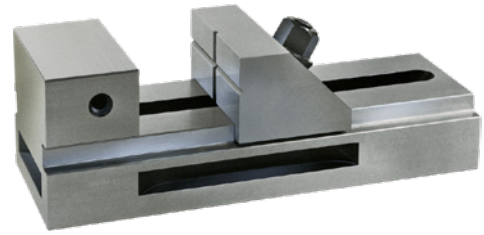


Application:

For horizontal, vertical and lateral grinding, inspection and eroding tasks.

Execution:

- Made of alloyed tool steel.
- Hardened and precision-ground.
- With pull-down effect.
- Horizontally and vertically ground vee block.
- Quick adjustment.
- Perpendicularity tolerance 0.005 mm/100 mm (base area to fixed jaw clamping surfaces).
- Ref. no. 010-030, parallelism tolerance 0.005 mm/100 mm (base surface to upper guide plate).



Art. no.	28600 030
Brand	RÖHM
Manufacturer Part Number	1111187
Model	Type PLF with top clamping screw
Prism countersunk horizontally and vertically	Yes
Jaws width	100 mm
Jaws height	45 mm
Height 2	45 mm
Clamping width	125 mm
Height	90 mm
Body length	245 mm
Gross Weight	9.746 kg
Product Group	202

EAN

4019208208374