

PRODUCT DATASHEET

HE 14 W/865

LUMILUX T5 HE | Tubular fluorescent lamps 16 mm, high efficiency, with G5 base



AREAS OF APPLICATION

- Public buildings
- Offices
- Shops
- Supermarkets and department stores
- Industry
- Outdoor applications only in suitable luminaires

PRODUCT BENEFITS

- Good economy and efficiency
- Up to 20 % more economical than LUMILUX T8
- Up to 50 % smaller volume than comparable T8 lamps

PRODUCT FEATURES

- Luminous efficacy: up to 104 lm/W
- Very good lumen maintenance: 90 % throughout the service lifetime of the lamp
- Long average lifetime: up to 24,000 h (with QUICKTRONIC ECG)
- Good color rendering group: 1B (R_a : 80...89)
- Dimmable



TECHNICAL DATA

Electrical data

Nominal voltage	220 V
Rated lamp efficacy (HF data 25 °C)	79 lm/W
Rated wattage	14.00 W
Nominal wattage	14.00 W

Photometrical data

Color rendering index Ra	≥80
Rated luminous flux	1100 lm
Luminous flux at 25 °C	1100 lm
Luminous flux at 35 °C	1300 lm
Light color	865
Rated color temperature	6500 K
Nominal luminous flux	1100 lm
Light color (designation)	LUMILUX Cool Daylight
Rated LLMF at 2,000 h	0.95
Rated LLMF at 4,000 h	0.92
Rated LLMF at 6,000 h	0.91
Rated LLMF at 8,000 h	0.90
Rated LLMF at 12,000 h	0.90
Rated LLMF at 16,000 h	0.90
Rated LLMF at 20,000 h	0.89
Color temperature	6500 K
Luminous flux	1100 lm
Color rendering index Ra	≥80

Dimensions & weight



Tube diameter	16 mm
---------------	-------

Length	549.0 mm
Length with base excl. base pins/connection	549.00 mm
Diameter	16.0 mm
Maximum diameter	16.0 mm

Temperatures & operating conditions

Rated ambient temp.w.max.luminous flux	35.0 °C
---	---------

Lifespan

Service life	19000 h ¹⁾
Lifespan	24000 h ¹⁾
Rated lamp survival factor at 2,000 h	0.99
Rated lamp survival factor at 4,000 h	0.99
Rated lamp survival factor at 6,000 h	0.99
Rated lamp survival factor at 8,000 h	0.99
Rated lamp survival factor at 12,000 h	0.99
Rated lamp survival factor at 16,000 h	0.97
Rated lamp survival factor at 20,000 h	0.85
Operation mode LLMF/LSF	HF
Rated lamp life time	24000 h
Nominal lamp life time	24000 h

¹⁾ With preheat ECG

Additional product data

Base (standard designation)	G5
Mercury content	1.5 mg
Show WEEE picto	Yes
Product remark	Suitable for ECG operation only/Lamp designed for internal luminaire temperatures of 30...40 °C; optimum luminous flux achieved at 35 °C

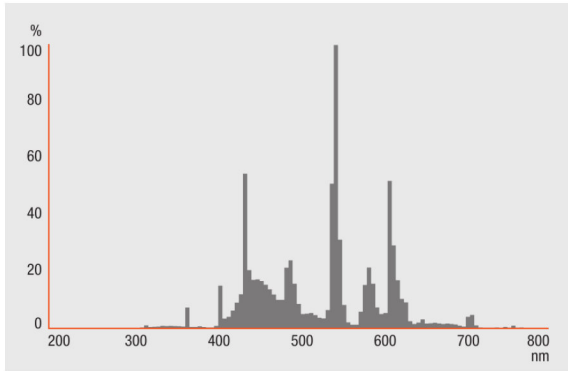
Capabilities

Dimmable	Yes
Suitable for indoor	Yes

Certificates & standards

Energy efficiency class	A
Energy consumption	16 kWh/1000h

Light Distribution

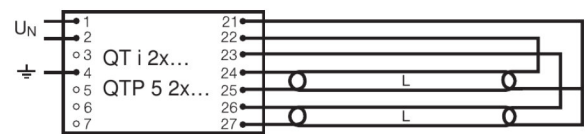


Spectral power distribution

Wiring Diagram



Wiring diagram



Wiring diagram

SYSTEM GUARANTEE

OSRAM System+ Guarantee in combination with OSRAM ECGs

SAFETY ADVICE

In case of lamp breakage: www.ledvance.com/brokenlamp

LOGISTICAL DATA

Product code	Packaging unit (Pieces/Unit)	Dimensions (length x width x height)	Gross weight	Volume
4050300464848	Unpacked 1	610 mm x 30 mm x 74 mm	52.75 g	1.35 dm ³
4050300464855	Shipping carton box 40	600 mm x 95 mm x 232 mm	2449.00 g	13.22 dm ³
4050300591544	Sleeves 1	570 mm x 20 mm x 23 mm	60.50 g	0.26 dm ³
4050300591551	Shipping carton box 20	587 mm x 90 mm x 110 mm	1349.00 g	5.81 dm ³

The mentioned product code describes the smallest quantity unit which can be ordered. One shipping unit can contain one or more single products. When placing an order, for the quantity please enter single or multiples of a shipping unit.

REFERENCES / LINKS

For more information on the system guarantee and the terms and conditions of the guarantee visit

▶ www.ledvance.com/system-guarantee

DISCLAIMER

Subject to change without notice. Errors and omission excepted. Always make sure to use the most recent release.

LUMILUX T5 HE | Tubular fluorescent lamps 16 mm, high efficiency, with G5 base

Product name	Product name ECG	EAN	Nominal current	Nominal wattage + Power loss	Luminous flux at 35 °C	Number of lighting outlets	EEL – Energy Label
HE 14 W/865	QT-ECO 1x4-16/220-240 L	4050300660370	0.10 A	15.00 W	1150 lm	1	A2
	QT-ECO 1x4-16/220-240 S	4050300638584	0.10 A	15.00 W	1150 lm	1	A2
	QT-FIT 5 1x14-35	4008321971234	0.08 A	16.00 W	1200 lm	1	
	QT-FIT 5 2x14-35	4008321971258	0.14 A	32.00 W	1200 lm	2	
	QT-FIT 5 3x14, 4x14	4008321971210	0.28 A	63.00 W	1200 lm	4	
	QTi 1x14/24/21/39 GII	4008321383334	0.08 A	16.00 W	1200 lm	1	
	QTi 1x14/24 DIM	4050300870922	0.07 A	15.40 W	1200 lm	1	
	QTi 1x28/54/35/49 GII	4008321383358	0.08 A	16.00 W	1275 lm	1	
	QTi 1x35/49/80 GII	4008321383372	0.08 A	16.00 W	1275 lm	1	
	QTi 2x14/24/21/39 GII	4008321383396	0.15 A	31.00 W	1200 lm	2	
	QTi 2x14/24 DIM	4050300870946	0.14 A	30.60 W	1200 lm	2	
	QTi 2x28/54/35/49 GII	4008321383419	0.15 A	32.00 W	1275 lm	2	
	QTi 2x35/49/80 GII	4008321658951	0.18 A	34.00 W	1250 lm	2	
	QTi 3x14/24 DIM	4008321069719	0.20 A	45.30 W	1200 lm	3	
	QTi 4x14/24 DIM	4008321069993	0.27 A	60.40 W	1200 lm	4	
	QTi DALI 1x14/24 DIM	4050300870380	0.07 A	15.40 W	1200 lm	1	
	QTi DALI 2x14/24 DIM	4050300870861	0.14 A	30.60 W	1200 lm	2	
	QTi DALI 3x14/24 DIM	4008321069955	0.20 A	45.30 W	1200 lm	3	
	QTi DALI 4x14/24 DIM	4008321070036	0.27 A	60.40 W	1200 lm	4	
	QTP5 1x14-35	4008321329035	0.08 A	16.00 W	1200 lm	1	
	QTP5 2x14-35	4008321329073	0.14 A	30.00 W	1200 lm	2	
	QTP5 3x14, 4x14	4008321484598	0.28 A	48.00 W	1350 lm	3	
	QTP5 3x14, 4x14	4008321484598	0.22 A	63.00 W	1350 lm	4	

Product name	Product name ECG	EAN	Luminous flux at 25 °C
HE 14 W/865	QT-ECO 1x4-16/220-240 L	4050300660370	
	QT-ECO 1x4-16/220-240 S	4050300638584	
	QT-FIT 5 1x14-35	4008321971234	
	QT-FIT 5 2x14-35	4008321971258	
	QT-FIT 5 3x14, 4x14	4008321971210	
	QTi 1x14/24/21/39 GII	4008321383334	
	QTi 1x14/24 DIM	4050300870922	
	QTi 1x28/54/35/49 GII	4008321383358	
	QTi 1x35/49/80 GII	4008321383372	
	QTi 2x14/24/21/39 GII	4008321383396	
	QTi 2x14/24 DIM	4050300870946	
	QTi 2x28/54/35/49 GII	4008321383419	
	QTi 2x35/49/80 GII	4008321658951	
	QTi 3x14/24 DIM	4008321069719	
	QTi 4x14/24 DIM	4008321069993	
	QTi DALI 1x14/24 DIM	4050300870380	
	QTi DALI 2x14/24 DIM	4050300870861	
	QTi DALI 3x14/24 DIM	4008321069955	
	QTi DALI 4x14/24 DIM	4008321070036	
	QTP5 1x14-35	4008321329035	
	QTP5 2x14-35	4008321329073	
	QTP5 3x14, 4x14	4008321484598	1200 lm
	QTP5 3x14, 4x14	4008321484598	1200 lm