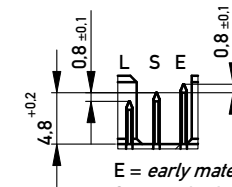
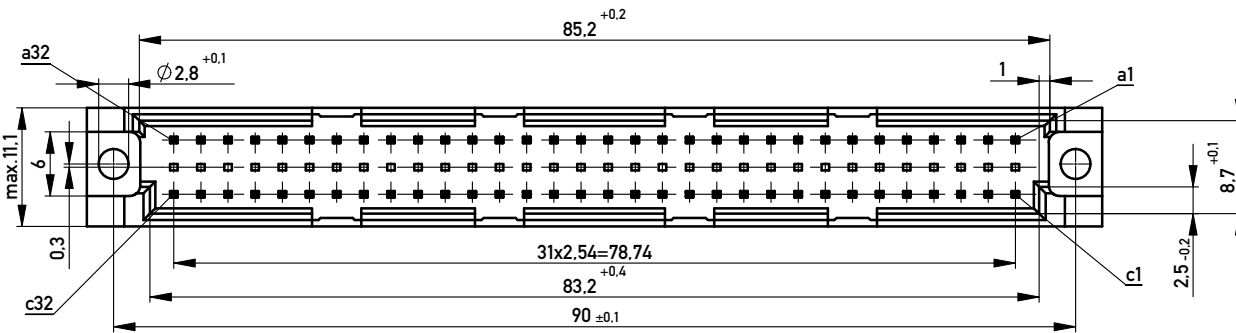


Stecklänge / mating length

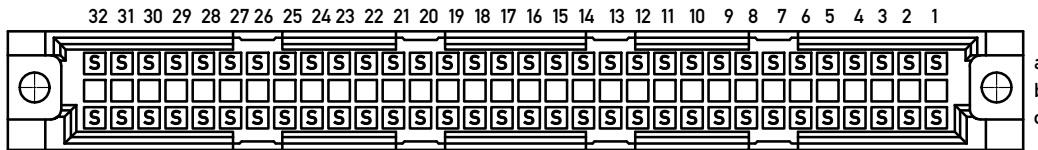


E = early mate, late break / voreilend  
 S = standard  
 L = late mate, early break / nacheilend



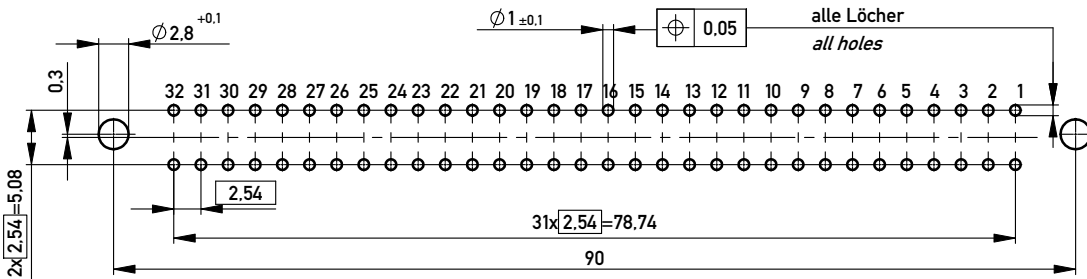
Lötanschluß 0,6x0,6mm /  
 Solder Terminal 0,6x0,6mm  
 Isolierwerkstoff / housing material : PBT GF 30  
 Bauart 4 / type 4  
 Anforderungsstufe 2 = 400 Steckzyklen / performance class 2 = 400 mating cycles  
 Fehlende Maße und Angaben nach IEC 60 603-2 / DIN EN 60 603-2  
 Missing information and dimensions per IEC 60 603-2 / DIN EN 60 603-2

Bestückungsplan / contact layout



Bedruckung siehe Zeichnung 294905  
 Marking see drawing 294905

Leiterplatten-Lochbild / PCB drillhole pattern



Copyright by ERNI GmbH.  
 Proprietary notice pursuant to ISO 16016 to be observed.

Information:		Tolerances		Scale 2:1
All rights reserved. Only for Information. To ensure that this is the latest version of this drawing, please contact one of the ERNI companies before using.		All Dimensions in mm		Designation
		Subject to modification without prior notice. Drawing will not be updated.		<b>Messerleiste R 64 Löt</b> <b>Male Connector R 64 Solder</b>
			www.ERNI.com	<b>374002</b>
B	15.02.2010			I
Index	Date			A3
				Class STVR