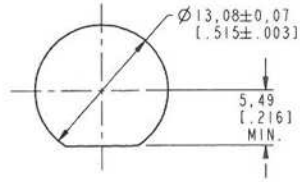
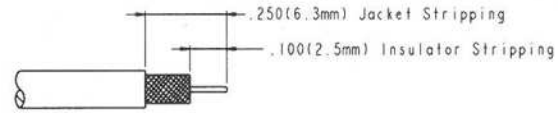


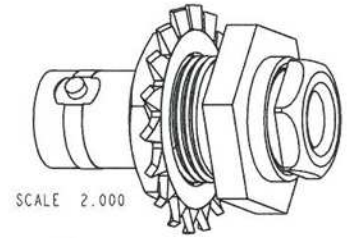
- NOTES:
- MATERIALS AND FINISHES:
 BODY - BRASS, SILVER PLATING
 CONTACT - BERYLLIUM COPPER, SILVER PLATING
 CLAMP NUT - BRASS, NICKEL PLATING
 LOCKWASHER - PHOSPHOR BRONZE, NICKEL PLATING
 INSULATOR - PTFE
 - ELECTRICAL:
 A. IMPEDANCE: 50 OHM
 - MECHANICAL:
 A. DURABILITY: 500 CYCLES MIN.
 B. TEMPERATURE RANGE: -65° C TO +165° C
 - PACKAGING:
 A. QUANTITY: SINGLE PACK
 B. MARKING: BAG TO BE MARKED
 "AMPHENOL RF, 31-206, AND DATE CODE"
 - SHOWS CABLE ENTRY DIMENSIONS.
 USED WITH RG-55/U AND RG-58/U CABLES.
 - CONTACT PIN SOLDER TO CABLE.



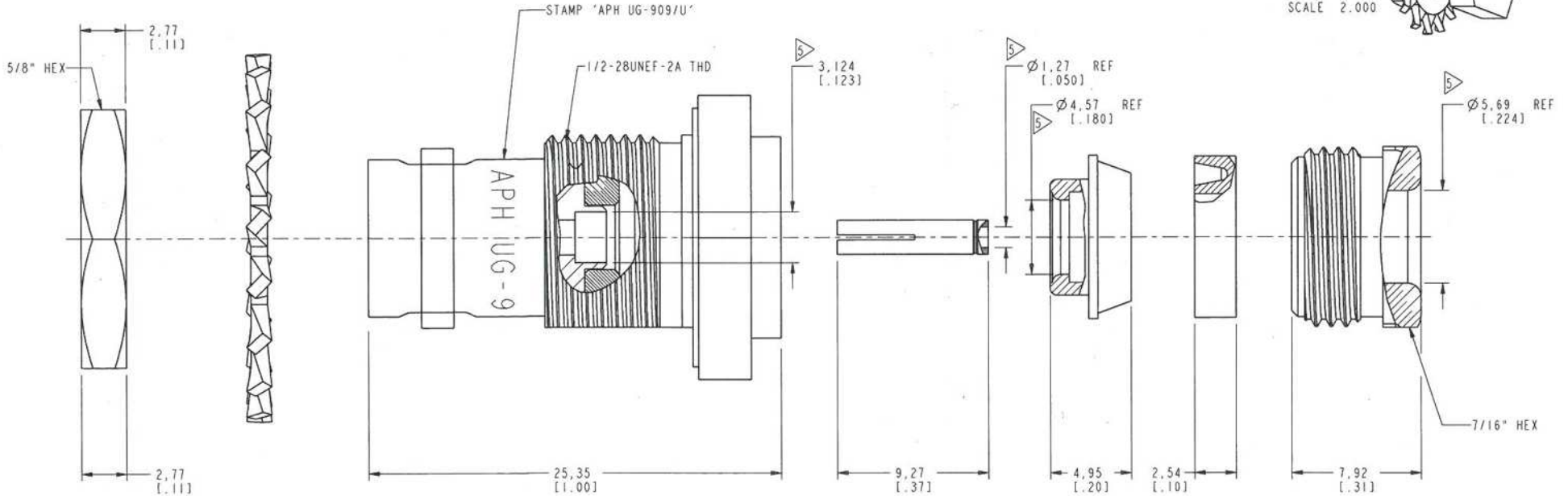
SCALE 2.000
PANEL MOUNTING HOLE DETAIL



RECOMMENDED STRIPPING LENGTH



SCALE 2.000



CUSTOMER OUTLINE DRAWING
 ALL OTHER SHEETS ARE FOR INTERNAL USE ONLY

UNLESS OTHERWISE SPECIFIED, DIMENSIONS ARE IN METRIC AND TOLERANCES ARE:
 <0.5mm ±0.05mm 0.5 - 6mm ±0.1mm 6 - 30mm ±0.2mm 30 - 120mm ±0.3mm ANGLES ±°

NOTICE - These drawings, specifications, or other data (1) are, and remain the property of Amphenol Corp. (2) must be returned upon request; and (3) are confidential and not to be disclosed to any person other than those to whom they are given by Amphenol Corp. The furnishing of these drawings, specifications, or other data by Amphenol Corp., or to any other person to anyone for any purpose is not to be regarded by implication or otherwise in any manner licensing, granting rights to permitting such holder or any other person to manufacture, use or sell any product, process or design, patented or otherwise, that may in any way be related to or disclosed by said drawings, specifications, or other data.

MATERIAL	SEE NOTE	DRAWN	DATE	TITLE		Amphenol RF Danbury CT USA, Tainan, Taiwan, Shenzhen, China www.amphenolrf.com
REFERENCE		ENGINEER	DATE	BNC JACK BULKHEAD UG-909/U		
FINISH		APPROVED	DATE	SCALE: 4.0:1.0	SHEET 2 OF 2	DRAWING NO. 31-206
		CAD FILE		B	REV V	ITEM NO. 31-206
						PART NO. 31-206

THIRD ANGLE PROJ.

REVISIONS

REV	DESCRIPTION	DATE	ECO	APPR
A	OFFICIAL RELEASE TO MFG.	06-Feb-53	2990	
T	REDRAWN IN PRO-E, ADDED DIMENSIONS	13-May-98	42332	JB/DR
U	ADD NOTE 8, CABLE ENTRY DIM'S, ITEM 3 TO NOTE 7, PKG BAG MARKING & REV LEVEL 'C' FOR MOTOROLA SPEC	20-Aug-98	42614	CPM/
V	SYNC DANBURY AND ARFA DRAWING	16-Sep-11	47675	