

**Industrial Ethernet
IE-XM-RJ45/RJ45**

Weidmüller Interface GmbH & Co. KG
Klingenbergstraße 16
D-32758 Detmold
Germany
Fon: +49 5231 14-0
Fax: +49 5231 14-292083
www.weidmueller.com



Mounting rail outlet, RJ45 junction design according to IEC 60603-7-51

General ordering data

Type	IE-XM-RJ45/RJ45
Order No.	8879050000
Version	Terminal rail outlet, RJ45-RJ45 coupler, IP20, Cat.6 (ISO/IEC 11801)
GTIN (EAN)	4032248614844
Qty.	1 pc(s).

**Industrial Ethernet
IE-XM-RJ45/RJ45**

Weidmüller Interface GmbH & Co. KG
Klingenbergstraße 16
D-32758 Detmold
Germany
Fon: +49 5231 14-0
Fax: +49 5231 14-292083
www.weidmueller.com

Technical data
Dimensions and weights

Net weight 49 g

Temperatures

Operating temperature, max.	70 °C	Operating temperature, min.	-25 °C
Operating temperature	-25 °C...70 °C	Storage temperature	
Installation temperature			

Environmental Product Compliance

REACH SVHC Lead 7439-92-1

General data

Connection 1	RJ45	Connection 2	RJ45
Description of article		Configuration	1 TE pitch dimension acc. to DIN 43880. insta-compatible Installation flange with mounting frame
Wiring	RJ45-RJ45 coupler Colour-coded pin assignment acc. to EIA/TIA T568 A (copper)	Colour code	Light Grey
Housing main material	PA 66, UL 94: V-0	Category	Cat.6 (ISO/IEC 11801)
Type of mounting	TS 35	Protection degree	IP20
Plugging cycles	750		

Electrical properties

Contact resistance	≤ 20 mΩ	Current-carrying capacity at 50 °C	1 A
Dielectric strength, contact / contact	≥ 1000 V DC	Dielectric strength, contact / shield	≥ 1500 V DC
Insulation strength	500 MΩ	PoE / PoE+	conforming to IEEE 802.3at

Standards

Connector standard	IEC 60603-7-5	Certificate No. (GERMLLOYD)	33451-06
Certificate no. (cULus)	E316369		

Classifications

ETIM 3.0	EC001264	ETIM 4.0	EC001264
ETIM 5.0	EC001264	ETIM 6.0	EC001121
UNSPSC	43-17-27-10	eClass 5.1	27-25-05-04
eClass 6.2	27-25-05-04	eClass 7.1	27-25-05-04
eClass 8.1	19-17-01-25	eClass 9.0	27-44-03-90
eClass 9.1	27-44-03-90		

Data sheet

**Industrial Ethernet
IE-XM-RJ45/RJ45**

Weidmüller Interface GmbH & Co. KG
 Klingenbergstraße 16
 D-32758 Detmold
 Germany
 Fon: +49 5231 14-0
 Fax: +49 5231 14-292083
 www.weidmueller.com

Technical data

Approvals

Approvals



ROHS Conform

Downloads

Approval/Certificate/Document of Conformity	GOST Approval Germanischer Lloyd DUXR.E316369
Brochure/Catalogue	CAT 9 IETH 15/16 EN FL FIELDWIRING EN PI PROFINET CABLING EN
Engineering Data	EPLAN, WSCAD, Zuken E3.S
User Documentation	MAN IE GUIDE DE MAN IE GUIDE EN Manual

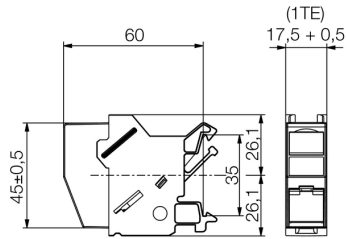
Data sheet

**Industrial Ethernet
IE-XM-RJ45/RJ45**

Weidmüller Interface GmbH & Co. KG
Klingenbergstraße 16
D-32758 Detmold
Germany
Fon: +49 5231 14-0
Fax: +49 5231 14-292083
www.weidmueller.com

Drawings

Dimensioned drawing



**Industrial Ethernet
IE-XM-RJ45/RJ45**

Weidmüller Interface GmbH & Co. KG
Klingenbergstraße 16
D-32758 Detmold
Germany
Fon: +49 5231 14-0
Fax: +49 5231 14-292083
www.weidmueller.com

Accessories**Outlet marker**

Markers for the labelling panel of terminal rail outlets from Weidmüller.

The benefits for you:

- white
- black
- on labelling sheet

General ordering data

Type	Order No.	Version	GTIN (EAN)	Qty.
IE-DM	8813500000		4032248513345	50 pc(s).