

- 1
- 2
- 3
- 4
- 5
- 6
- 7
- 8
- 9
- 10
- 11
- 12
- 13
- 14
- 15
- 16
- 17
- 18
-

STANDARD EXECUTIONS

- **GN 192-BL-2:** natural aluminium, matte finish, AISI 304 stainless steel clamping screws and nuts.
- **GN 192-SW-2:** aluminium, epoxy resin coating, RAL 9005 black colour, matte finish, AISI 304 stainless steel clamping screws and nuts.

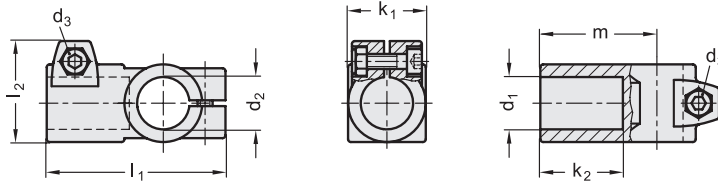
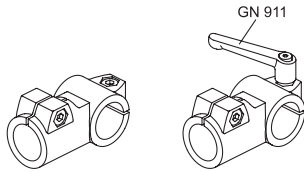
FEATURES AND APPLICATIONS

The assembly holes of GN 192 connecting clamps allow an excellent match with tubes GN 990 (see page 1368).

The clamping screw d_3 may be replaced by clamping kit GN 911 (see page 1372).

SPECIAL EXECUTIONS ON REQUEST

Different combinations of holes d_1/d_2 .



Code BL	Code SW	Description	d_1	d_2	d_3	k_1	k_2	l_1	l_2	m	d_3 Clamping kit	
GN.52411	GN.52416	GN 192-B20-B20-40-2-*	20	20	M8	40	40	92	52	60	GN 911-M8-32	267
GN.52431	GN.52436	GN 192-B25-B25-40-2-*	25	25	M8	40	40	92	52	60	GN 911-M8-32	231
GN.52451	GN.52456	GN 192-B30-B30-40-2-*	30	30	M8	40	40	92	52	60	GN 911-M8-32	186
GN.52471	GN.52476	GN 192-B30-B30-56-2-*	30	30	M10	56	56	129	69	88	GN 911-M10-40	661
GN.52491	GN.52496	GN 192-B32-B32-56-2-*	32	32	M10	56	56	129	69	88	GN 911-M10-40	619
GN.52511	GN.52516	GN 192-B35-B35-56-2-*	35	35	M10	56	56	129	69	88	GN 911-M10-40	570
GN.52531	GN.52536	GN 192-B40-B40-56-2-*	40	40	M10	56	56	129	69	88	GN 911-M10-40	481
GN.52551	GN.52556	GN 192-B40-B40-65-2-*	40	40	M10	65	65	148	77.5	103	GN 911-M10-55	922
GN.52571	GN.52576	GN 192-B42-B42-65-2-*	42	42	M10	65	65	148	77.5	103	GN 911-M10-55	889
GN.52591	GN.52596	GN 192-B45-B45-65-2-*	45	45	M10	65	65	148	77.5	103	GN 911-M10-55	814
GN.52611	GN.52616	GN 192-B48-B48-65-2-*	48	48	M10	65	65	148	77.5	103	GN 911-M10-55	732
GN.52631	GN.52636	GN 192-B50-B50-65-2-*	50	50	M10	65	65	148	77.5	103	GN 911-M10-55	676
GN.52651	GN.52656	GN 192-B50-B50-80-2-*	50	50	M10	80	80	177	92	125	GN 911-M10-55	1660
GN.52691	GN.52696	GN 192-B60-B60-80-2-*	60	60	M10	80	80	177	92	125	GN 911-M10-55	1260

Connecting clamps

* Complete the description of the standard item needed by adding the finish of the connector clamps: BL (blank) or SW (black).