

## STANDARD EXECUTIONS

Die-cast zinc alloy handle shanks, with epoxy resin coating, threaded blind holes. Fixation to the tube by means of two screws.

- **GN 333-EL:** anodised aluminium tube, natural colour.

Handle shanks RAL 9005 black colour, matte finish.

- **GN 333-ES:** anodised aluminium tube, natural colour.

Handle shanks RAL 9006 grey colour, matte finish.

- **GN 333-SW:** aluminium tube covered with epoxy resin, RAL 9005 black colour, matte finish.

Handle shanks RAL 9005 black colour, matte finish.

## END CAPS

Polyamide based (PA) technopolymer, light grey colour.

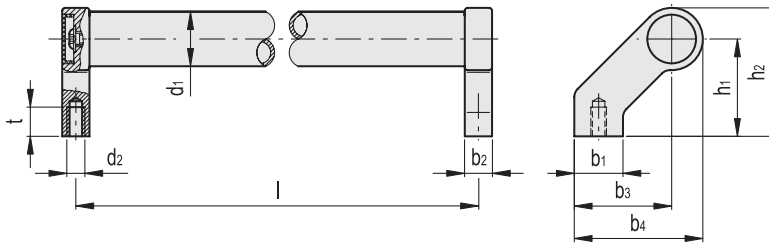
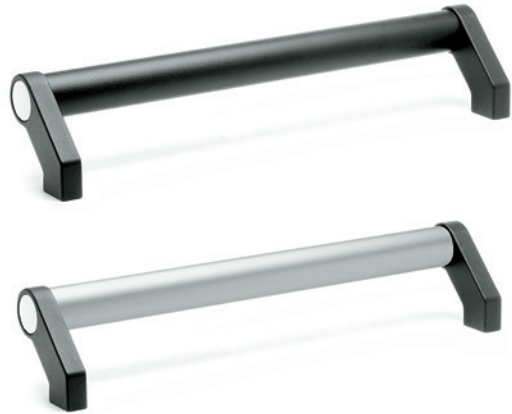
## FEATURES AND APPLICATIONS

Two screws tighten the tube to the handle shanks, preventing rotation. These handles are typically used on turning or rolling doors.

## SPECIAL EXECUTIONS ON REQUEST

- Different lengths.

- GN 333.2: tubular handles with movable handle shanks.



Code	Description	d1	l±0.25	d2	b1	b2	b3	b4	h1	h2	tmin	⚖
GN.27698	GN 333-20-180-A-EL	20	180	M6	24	12	42	54	42	54	12	242
GN.27699	GN 333-20-180-A-ES	20	180	M6	24	12	42	54	42	54	12	242
GN.27700	GN 333-20-180-A-SW	20	180	M6	24	12	42	54	42	54	12	242
GN.27701	GN 333-20-200-A-EL	20	200	M6	24	12	42	54	42	54	12	246
GN.27702	GN 333-20-200-A-ES	20	200	M6	24	12	42	54	42	54	12	246
GN.27703	GN 333-20-200-A-SW	20	200	M6	24	12	42	54	42	54	12	246
GN.27704	GN 333-20-300-A-EL	20	300	M6	24	12	42	54	42	54	12	283
GN.27705	GN 333-20-300-A-ES	20	300	M6	24	12	42	54	42	54	12	283
GN.27706	GN 333-20-300-A-SW	20	300	M6	24	12	42	54	42	54	12	283
GN.27707	GN 333-20-400-A-EL	20	400	M6	24	12	42	54	42	54	12	321
GN.27708	GN 333-20-400-A-ES	20	400	M6	24	12	42	54	42	54	12	321
GN.27709	GN 333-20-400-A-SW	20	400	M6	24	12	42	54	42	54	12	321
GN.27661	GN 333-28-200-A-EL	28	200	M8	25	14	50	66	50	66	15	432
GN.27663	GN 333-28-200-A-ES	28	200	M8	25	14	50	66	50	66	15	432
GN.27662	GN 333-28-200-A-SW	28	200	M8	25	14	50	66	50	66	15	432
GN.27665	GN 333-28-300-A-EL	28	300	M8	25	14	50	66	50	66	15	470
GN.27667	GN 333-28-300-A-ES	28	300	M8	25	14	50	66	50	66	15	470
GN.27666	GN 333-28-300-A-SW	28	300	M8	25	14	50	66	50	66	15	470
GN.27671	GN 333-28-500-A-EL	28	500	M8	25	14	50	66	50	66	15	535
GN.27673	GN 333-28-500-A-ES	28	500	M8	25	14	50	66	50	66	15	535
GN.27672	GN 333-28-500-A-SW	28	500	M8	25	14	50	66	50	66	15	535

