



# MASTER LEDtube InstantFit HF T5

## Master LEDtube HF 600mm HE 8W 865 T5

The Philips MASTER LEDtube integrates an LED light source into a traditional fluorescent form factor. Its unique design creates a perfectly uniform visual appearance, which cannot be distinguished from traditional fluorescents. These T5 lighting tubes are the right choice for absolute performance and are designed to stand up to everyday conditions. Unparalleled savings, thanks to low energy consumption and an exceptionally long lifetime, make these T5 LED tubes the choice for every demanding applications.

### Product data

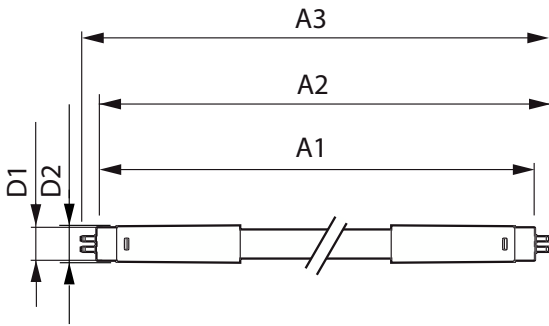
General information		Operating and electrical	
Cap base	G5 [G5]	Line Frequency	30K to 100K Hz
Nominal lifetime	60,000 h	Input frequency	30 K to 100 K Hz
Switching Cycle	50,000	Power Consumption	8 W
Lighting Technology	LED	Starting time (nom.)	0.5 s
Flux measurement reference	Sphere	Warm-up time to 60% light	0.5 s
Light technical		Power Factor (Fraction)	0.92
Colour Code	865 [CCT of 6500K]	Voltage (nom.)	40-70 V
Beam angle (nom.)	200 degree(s)	Temperature	
Luminous Flux	1,050 lm	T-Case maximum (nom.)	65 °C
Colour designation	Cool Daylight	Controls and dimming	
Correlated Colour Temperature	6500 K	Dimmable	Yes – Check ballast compatibility
Luminous Efficacy (rated) (Nom)	131 lm/W	Mechanical and housing	
Colour consistency	<6	Lamp Finish	Frosted
Colour rendering index (CRI)	80	Bulb material	Glass
LLMF at end of nominal lifetime (nom.)	70 %		

# MASTER LEDtube InstantFit HF T5

Product length	600 mm
Bulb shape	Tube, double-ended
<b>Approval and application</b>	
Energy-saving product	Yes
Approval marks	RoHS compliance TUV CE marking KEMA Keur certificate
Energy consumption kWh/1,000 hours	8 kWh
EPREL registration number	1,384,133
CE mark	Yes
EU RoHS compliant	Yes

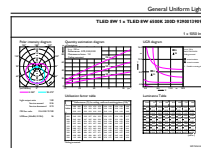
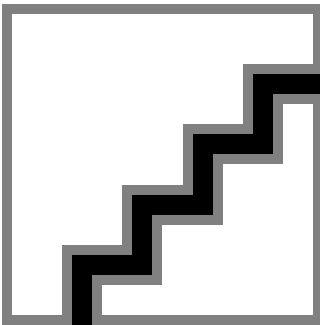
<b>Product data</b>	
Full EOC	871869674327000
Order product name	MAS LEDtube HF 600mm HE 8W 865 T5
Order code	74327000
SAP numerator – quantity per pack	1
Numerator – packs per outer box	10
Material number (12NC)	929001390902
Net weight	0.080 kg
Full product name	Master LEDtube HF 600mm HE 8W 865 T5
EAN/UPC – Case	8718696743287

## Dimensional drawing



Product	D1	D2	A1	A2	A3
MAS LEDtube HF 600mm HE 8W 865 T5	15.5 mm	18.8 mm	549 mm	556.1 mm	563.2 mm

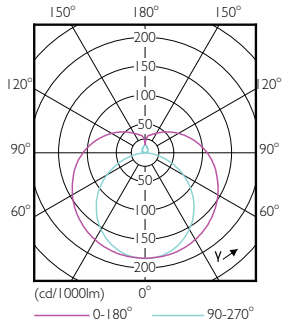
## Photometric data



Spectral Power Distribution Colour - MAS LEDtube HF 600mm HE 8W 865 T5

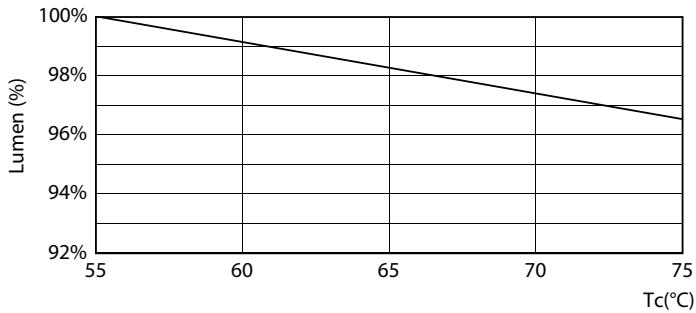
# MASTER LEDtube InstantFit HF T5

## Photometric data

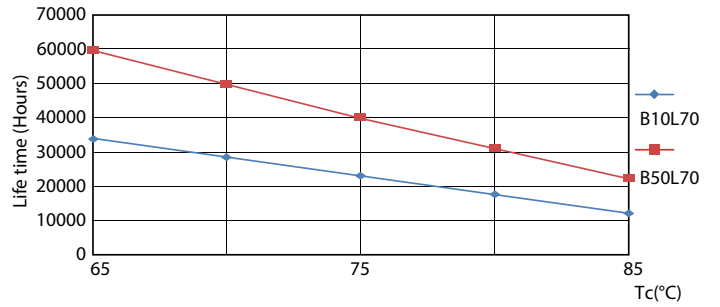


Light Distribution Diagram - MAS LEDtube HF 600mm HE 8W 865 T5

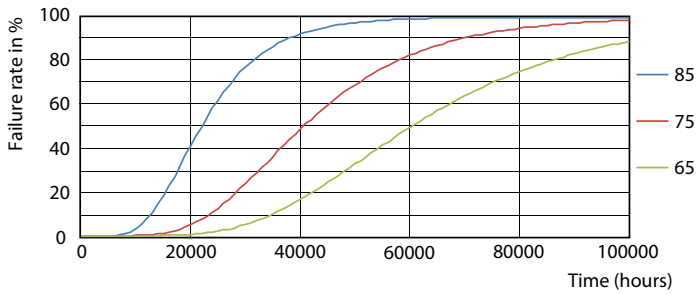
## Lifetime



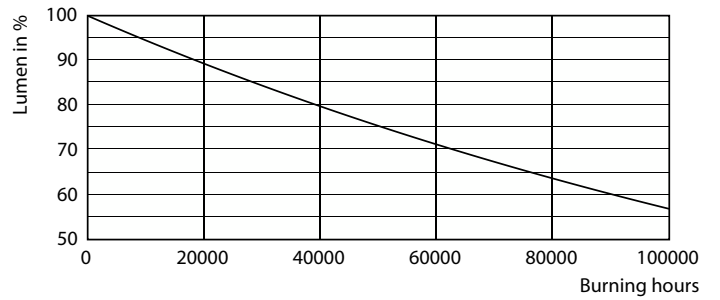
Lumen Maintenance Diagram - MAS LEDtube HF 600mm HE 8W 865 T5



Life Expectancy Diagram - MAS LEDtube HF 600mm HE 8W 865 T5



Life Expectancy Diagram - MAS LEDtube HF 600mm HE 8W 865 T5



Lumen Maintenance Diagram - MAS LEDtube HF 600mm HE 8W 865 T5

# MASTER LEDtube InstantFit HF T5

## Lifetime



Life Expectancy Diagram - MAS LEDtube HF 600mm HE 8W 865 T5

