

SPRING & BUTTON CONTACTS

For "AAA" · "AAAA" · "N" · "12V"

- Economical and reliable contacts are ideal for molded cases with self contained battery compartments
- Single and dual contact designs available for "AAA", "AAAA", "N" & "12V" size batteries
- "Solder tab" design for either wire lead or PC mounting
- Unique spring contacts adjust to variations in battery lengths
- Reliable spring contacts assure low contact resistance and a dependable connection
- Space saving, economical, excellent mechanical construction

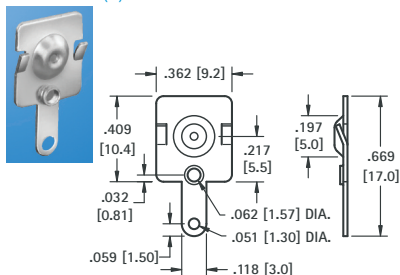
MATERIAL:

Plate: .020 (.51) thick Steel, Nickel Plate **Spring:** Spring Steel, Nickel Plate

Refer to page 27 for Battery Contact Layout & Mounting Details

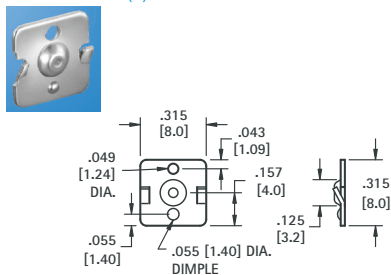
For "AAA" · "AAAA" · "N" · "12V"

(+) POSITIVE BUTTON WITH TAB



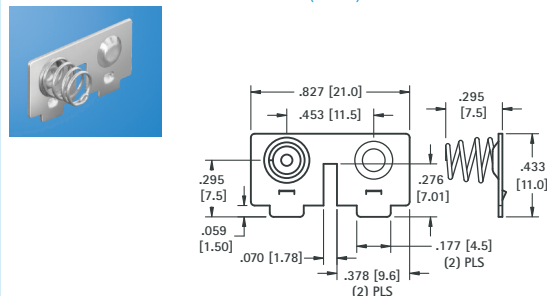
CAT. NO. 5226

(+) POSITIVE BUTTON



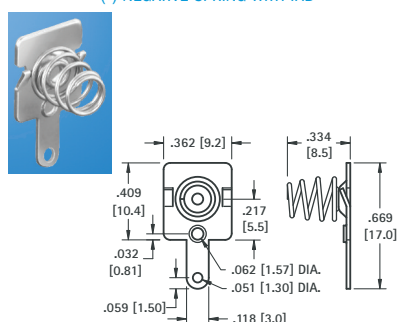
CAT. NO. 5225

DUAL CONTACT (RIGHT)



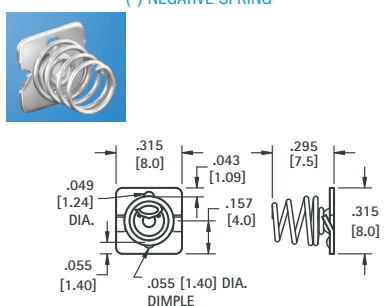
CAT. NO. 5213

(-) NEGATIVE SPRING WITH TAB



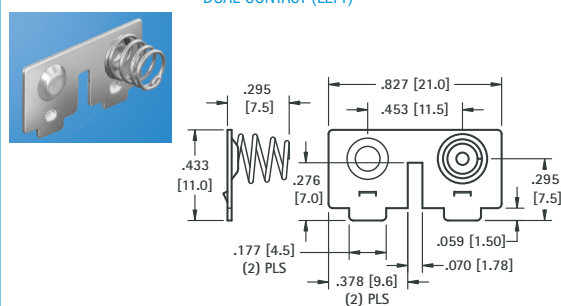
CAT. NO. 5204

(-) NEGATIVE SPRING



CAT. NO. 5203

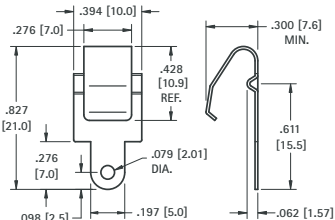
DUAL CONTACT (LEFT)



CAT. NO. 5214

LEAF-SPRING CONTACTS

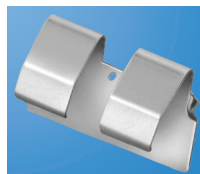
For "A" · "AA" · "9V"



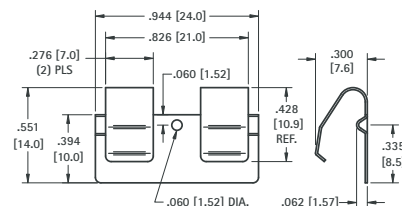
CAT. NO. 5209

MATERIAL: .012 (.30) thick Phosphor Bronze, Nickel Plate

Refer to page 27 for Battery Contact Layout & Mounting Details



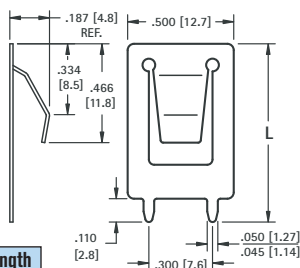
For "A" · "AA"



CAT. NO. 5208

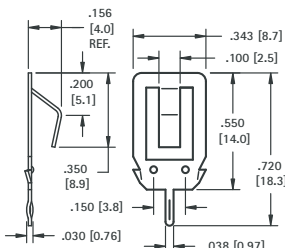
MATERIAL: .012 (.30) thick Phosphor Bronze, Nickel Plate

UNIVERSAL BATTERY SIZES



CAT. NO.	(L) Length
109-2	.840 (21.3)
109-3	1.000 (25.4)

MATERIAL: .012 (.30) thick Spring Steel, Nickel Plate



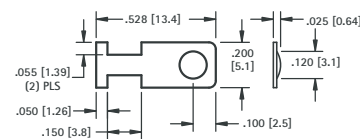
CAT. NO. 108-2

MATERIAL: .012 (.30) thick Spring Steel, Tin Nickel Plate



For "AAA" · "AAAA" · "N" · "12V"

- Designed for remote control applications



CAT. NO. 230-1

MATERIAL: .008 (.20) thick Spring Steel, Tin Nickel Plate