

EAO – Your Expert Partner for Human Machine Interfaces

70-220.9S - Switching element with illumination

70-220.9S - Switching element with illumination



Attention: The preview is based on a sample product. This can differ from your current configuration.

Other Attributes

Weight 0,001 kg

Connection Method

Terminal PCB

Actuator

Switching action Momentary

Switching element

Contact material
Switching system Short-travel element
Switching voltage 42 V AC/DC
Switching current 0.1 A
Contacts 1 NO

Illumination

Illumination white
LED colour white
Forward voltage typ. 3,2 V

Optics

Lumi. intensity 500 mcd
Dom. wavelength x=0.3/y=0.3 nm

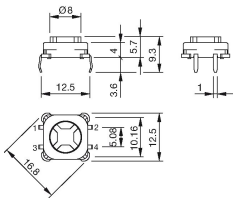
Function

Illuminated pushbutton

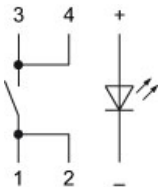
EAO – Your Expert Partner for Human Machine Interfaces

70-220.9S - Switching element with illumination

Dimensions



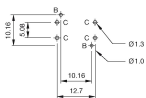
Wiring diagram



Component layout

Single-LED

Drilling plan (element side)
 B: Hole for LED
 C: Holes for contact pins
 Pin max. Ø 2.5 mm
 Through-connection recommended



Additional information

The customer has to decide what series resistor shall be used to the LED

Dimensions with fitted lens see details «Lens»

Luminosity and wave length variations caused by LED manufacturing processes may cause slight differences regarding the illumination

Legend

Contacts: NO = Normally open

Switching action: B = Momentary