



ACCES.F.FUSE SWI. DISCONNECTOR FOR NH1  
AUXILIARY CONDUCTOR CONNECTION FOR  
SADDLE TERMINAL OR PRISM TERMINAL

Figure similar

| Model                 |   |
|-----------------------|---|
| product brand name    | SENTRON   |
| Design of the product | for 3NP1 fuse switch disconnectors, auxiliary conductor connection 0.25 to 1 mm <sup>2</sup> , for size NH1 with saddle or prism terminal |

| Accessories |                   |
|-------------|-------------------|
| accessories | Connection system |

| General Product Approval | Declaration of Conformity |
|--------------------------|---------------------------|
|--------------------------|---------------------------|



## Further information

**Information- and Downloadcenter (Catalogs, Brochures,...)**

<http://www.siemens.com/lowvoltage/catalogs>

**Industry Mall (Online ordering system)**

<https://eb.automation.siemens.com/mall/en/WW/Catalog/Product/3NP19431BG30>

**Service&Support (Manuals, Certificates, Characteristics, FAQs,...)**

<http://support.automation.siemens.com/WW/view/en/3NP19431BG30/all>

**Image database (product images, 2D dimension drawings, 3D models, device circuit diagrams, ...)**

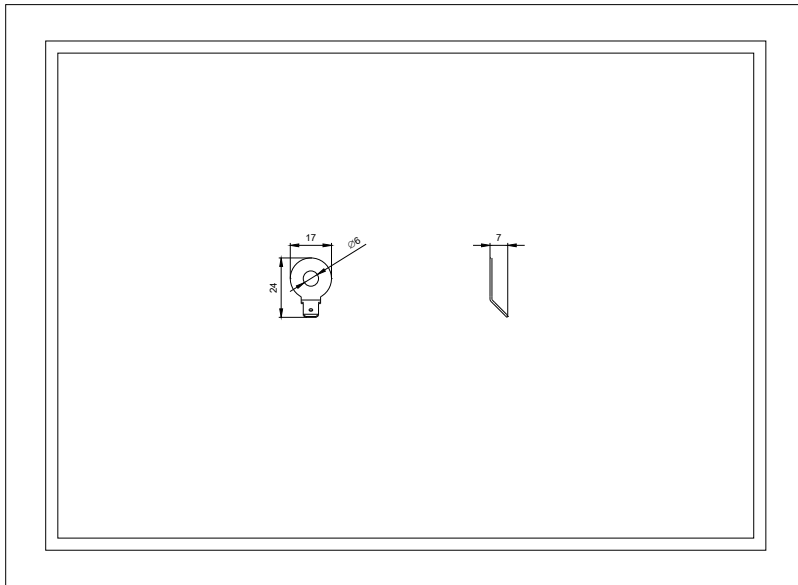
[http://www.automation.siemens.com/bilddb/cax\\_en.aspx?mlfb=3NP19431BG30](http://www.automation.siemens.com/bilddb/cax_en.aspx?mlfb=3NP19431BG30)

**CAX-Online-Generator**

<http://www.siemens.com/cax>

**Tender specifications**

<http://ausschreibungstexte.siemens.com/tiplv>



last modified:

11.03.2015