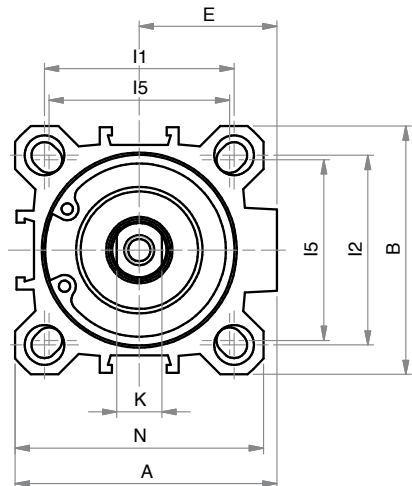
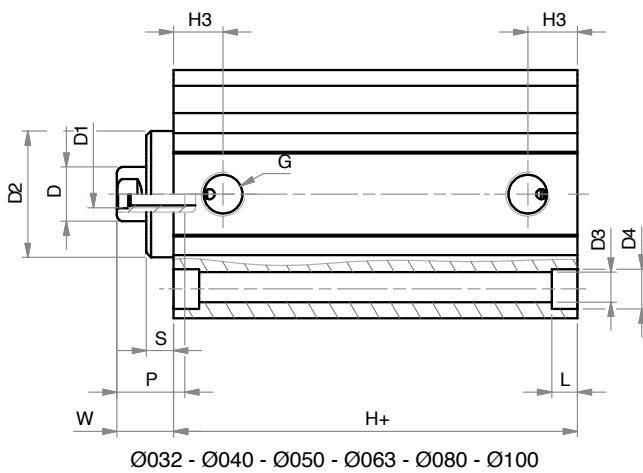
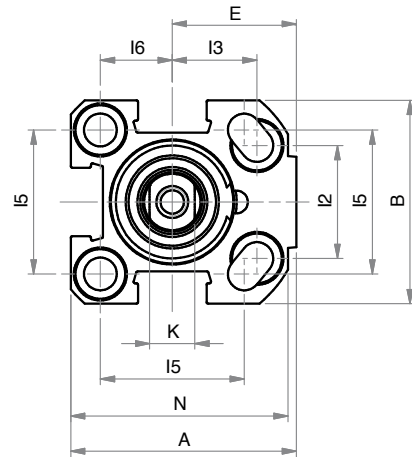
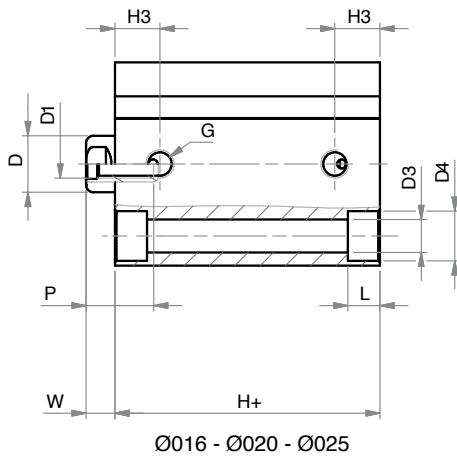
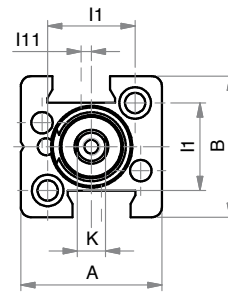
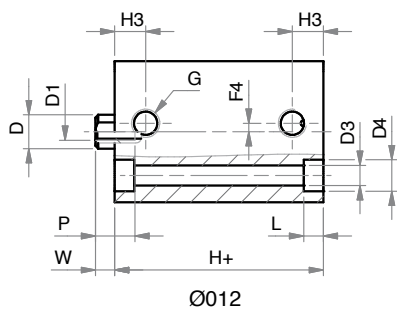
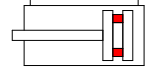


**DOPPIO EFFETTO MAGNETICO**

H2NM

**DOUBLE ACTING MAGNETIC**



## DOPPIO EFFETTO MAGNETICO

## DOUBLE ACTING MAGNETIC

DIMENSIONI - DIMENSIONS										
Ø	012	016	020	025	032	040	050	063	080	100
A	25	34	40	44,5	51	58	70	89	105	131
B	25	30	36	40	46	55	65	80	100	124
Ø D	6	8	10	10	12	12	16	16	20	25
D1	M3	M4	M5	M5	M6	M6	M8	M8	M10	M12
Ø D2	-	-	-	-	24,5	28	34	38,5	44	56
Ø D3	3,7	**	5,8	5,8	5,8	5,8	6,8	9	9	11
Ø D4	5,6	**	9	9	9	9	11	14	14	17,2
E	-	19	22	24,5	27	30,5	37,5	46	55	69
G	M5	M5	M5	G1/8	G1/8	G1/8	G1/8	G1/8	G1/4	G1/4
H+	27	32*	32*	38,5*	39,5	39,5	39,5	42	46	56
H3	5,5	8	8	10,5	11,5	11	11,5	11	14	16
I1	15,5	-	-	-	36	42	50	62	82	103
I2	-	18	20	26	32	42	50	62	82	103
I3	-	12	15	15,5	-	-	-	-	-	-
I5	-	20	25,5	28	34	40	50	60	77	94
I6	-	10	12,7	14	-	-	-	-	-	-
K	5	6	8	8	10	10	13	13	17	22
L	3,5	4,6	5,7	5,7	5,7	5,7	6,8	8,8	9	11
L1	-	3,5	5,7	5,7	-	-	-	-	-	-
N	-	32	38,5	42	48	55	65	80	100	124
P	7	11	12	12	15	15	17	17	17	22
S	-	-	-	-	5	6	6	8	10	10,5
W	3,5	4,5	4,5	5,5	11	12,5	13,5	15	18	20,5

+ = aggiungere lunghezza corsa (mm) - add stroke length (mm)

\* per corse - for strokes >= 025:

Ø 016-020 aggiungere - add +6 mm

Ø 025 aggiungere - add +1 mm

\*\* vedi quote pagina 173 - see dimensions page 173

Ø	CORSE STANDARD - STANDARD STROKES
012	5 - 10 - 15 - 20 - 25 - 30 - 40
016	5 - 10 - 15 - 20 - 25 - 30 - 40 - 50 - 60 - 80 - 100
020	5 - 10 - 15 - 20 - 25 - 30 - 40 - 50 - 60 - 80 - 100 - 125
025	5 - 10 - 15 - 20 - 25 - 30 - 40 - 50 - 60 - 80 - 100 - 125
032	5 - 10 - 15 - 20 - 25 - 30 - 40 - 50 - 60 - 80 - 100 - 125 - 160
040	5 - 10 - 15 - 20 - 25 - 30 - 40 - 50 - 60 - 80 - 100 - 125 - 160
050	10 - 15 - 20 - 25 - 30 - 40 - 50 - 60 - 80 - 100 - 125 - 160 - 200
063	10 - 15 - 20 - 25 - 30 - 40 - 50 - 60 - 80 - 100 - 125 - 160 - 200
080	10 - 15 - 20 - 25 - 30 - 40 - 50 - 60 - 80 - 100 - 125 - 160 - 200 - 250
100	10 - 15 - 20 - 25 - 30 - 40 - 50 - 60 - 80 - 100 - 125 - 160 - 200 - 250

!!!: Le corse intermedie vengono realizzate con il corpo della corsa standard superiore e con distanziale interno per limitarne la corsa a quella richiesta.

Intermediate strokes are made with the profile of the standard superior stroke and with an internal spacer which limits the stroke to the required one.