



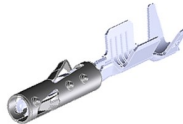
Product Change Notification (PCN)

PCN Number	511558	Date Issued	February 15, 2022
Reason for Change	Capacity change or tool replacement		
Change Type Description	This letter is to inform you that another set of tooling is being added to meet the current and future demands of this product. There will be no changes in the fit, form or function from the additional tooling when compared to the current tooling.		
Assessment of Change	Product will be fully qualified before it is shipped. Qualification reports will be available after below listed date		
Internal Molex Qualification Date	June 30, 2022		
Sample Availability Date (Changed Part)	June 30, 2022		
Planned Implementation Date	August 22, 2022		
Method of Identifying Change	Special label on the packaging		

Before Change

Impacted Products Pictures

CP0,6 Terminal



After Change

Overview

- To ensure business continuity, another tool is being added
 - Adding to keep up with current and future demand
- "No impact to fit, form, function or appearance".
 - Tool will be an exact replica of the current tool
- Part Number Impact:
 - See attached list
 - These part numbers are Molex proprietary designs, therefore considered catalog/general market product.
- Level 4 PPAP will be available upon request beginning 29-Jul-2022. Request for PPAP must occur by 22-Aug-2022. Submissions must will not occur without request.
 - If PPAP requested, disposition response required within 5 days of submit date or it will be considered approved.
 - If no PPAP requested by 22-Aug-2022, the PPAP will be considered approved.

2 Molex Confidential Information © Molex, LLC - All Rights Reserved. Unauthorized Reproduction/Distribution is Prohibited.



Product Change Notification (PCN)

You may address any technical inquiries regarding this PCN by sending E-mail to pcn_coordinator@molex.com or your Local Sales Engineer.

Note: While responding, please retain "**PCN Notification:511558**" in the e-mail Subject line for faster response.

RELEASED

Molex, LLC
2222 Wellington Court
Lisle, IL 60532
TEL: 630-969-4747
www.molex.com