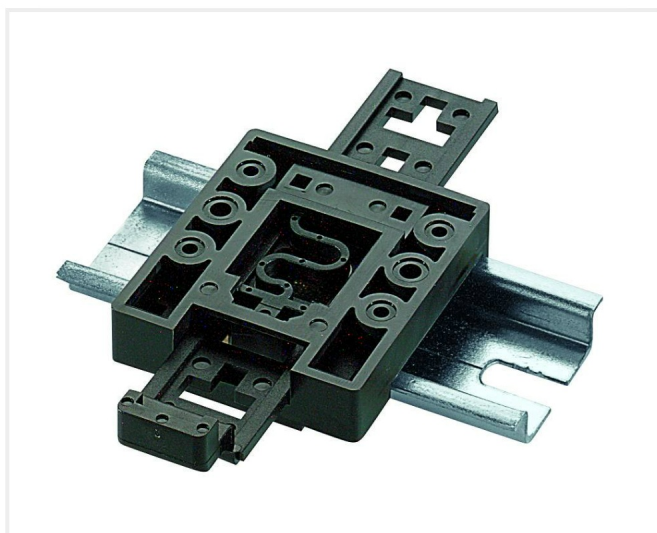


Cable glands / General Accessories | Universal DIN rail holder TSH 35, polyamide



TSH 35

Order no.: 22035000

* = Available on request.

Characteristics

Colour of enclosure group

black

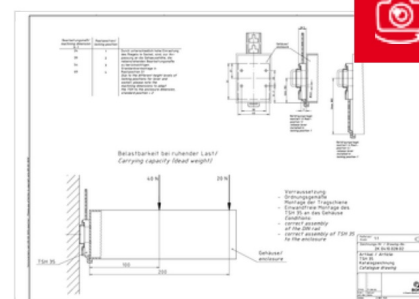
Scope of delivery

1 DIN rail holder, screws for enclosure mounting

Note

This DIN rail holder consists of a base and a bolt. The bolt can be snapped into the base in different positions. This makes it ideal for use with enclosure heights between 70 mm and 160 mm. It is fitted approximately in the middle of the enclosure, and the bolt projecting from the enclosure base can be disconnected from the rail by means of a screwdriver in the normal way. For assembly, insert the screws (enclosed) from the inside of the enclosure. This guarantees full insulation protection. On small enclosures, the part of the bolt which projects upwards can be pinched off. In the case of very wide enclosures, it may be necessary to fit two DIN rail holders.

Product drawing



Important!

To compensate for pressure when temperatures change and cause moisture in the enclosure, we recommend that you use a [pressure compensation](#) element.

17.07.2023

In order to ensure that you can determine **the correct quantity of elements for your application**, we are providing you here with a DAE calculator.

[» Additional information](#)

Technical documentation / Downloads

Technical drawings

3D product data in STEP format:

Login to download

Product drawing in PDF format:

22035000 TSH-35.pdf

(85.2 KB)

Product drawing in DXF format:

22035000 TSH-35.dxf

(508.8 KB)

Product information

Maximum Load DIN Rail enclosures EN.pdf

(110.3 KB)