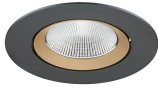


## Expospot 70 adjustable

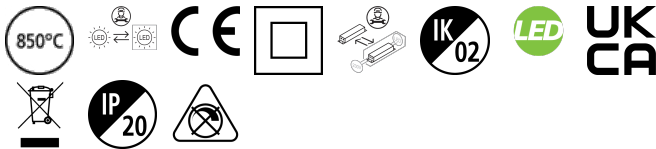
### EXPOSPOT 70 ADJUSTABLE RA90 3000K MB BLACK

#### 2070027



#### Product features

- Integrated LED adjustable accent downlight, single head, ideal for retail and display applications, die-cast aluminium body, black colour housing, passive cooling, beam angle: 42°, optics: aluminium reflector and lens combination, colour temperature: 3000K, total system power: 21W, total fixture output: 1793lm, 85lm/W, LOR: 100%, colour rendering: Ra 90 typical, LED Chromacity: 3 step MacAdam ellipse, lifetime: 55,000 hours at L90B10, energy class: A++, A+, A, IR/UV free light source without heat radiation, operating voltage: 220-240V / 50-60Hz, electronic driver, non-dimmable, electrical protection: CLASS II, ingress protection rating: IP20, suitable for internal environment only, ceiling cut-out: 126mm, outer dimensions: 137x101mm, weight: 0.52kg.



#### PRODUCT OVERVIEW

Product name	EXPOSPOT 70 ADJUSTABLE RA90 3000K MB BLACK
Technology	LED
Cap/Base	N/A
Housing	Aluminium
Mount	Ceiling recessed mounting
Fixture rating	Enclosed
General application	Hospitality, Museums & Galleries, Retail
ETIM Class	EC001744
Warranty	5 years
Fixture luminous flux (lm)	1793
Luminaire efficacy (lm/W)	85
LOR (%)	100
Colour temperature (K)	3000
Light colour	Warm White
CRI (Ra)	90
Colour Variation Initial (SDCM)	SDCM3
Beam Angle (°)	42
Photobiological Risk Group	RG1
Total power consumption (W)	21
Electrical protection	Class II
Control gear type	LED driver constant current
Control gear mounting	Remote
Dimmable	No
Dimming method	N/A
Housing colour	Black
IP rating	IP20
IK rating	IK02
Product EAN number	5025768700271

#### DATA TABLE

## Expospot 70 adjustable

*EXPOSPOT 70 ADJUSTABLE RA90 3000K MB BLACK*  
2070027

### General data

<b>Product name</b>	EXPOSPOT 70 ADJUSTABLE RA90 3000K MB BLACK
<b>Technology</b>	LED
<b>Cap/Base</b>	N/A
<b>Housing</b>	Aluminium
<b>Mount</b>	Ceiling recessed mounting
<b>Fixture rating</b>	Enclosed
<b>General application</b>	Hospitality, Museums & Galleries, Retail
<b>Operating temperature range (°C)</b>	1°C...+25°C
<b>Performance ambient temperature Tq (°C)</b>	25
<b>ETIM Class</b>	EC001744
<b>Warranty</b>	5 years

### Optical data

<b>Fixture luminous flux (lm)</b>	1793
<b>Luminaire efficacy (lm/W)</b>	85
<b>LOR (%)</b>	100
<b>Colour temperature (K)</b>	3000
<b>Correlated colour temperature range (K)</b>	3000 - 3000
<b>Light colour</b>	Warm White
<b>CRI (Ra)</b>	90
<b>Colour Variation Initial (SDCM)</b>	SDCM3
<b>Beam Angle (°)</b>	42
<b>Distribution type</b>	Symmetric
<b>Photobiological Risk Group</b>	RG1

### Electrical data

<b>Total power consumption (W)</b>	21
<b>Mains voltage (V)</b>	230-240V
<b>Lamp power factor</b>	0.95
<b>THD (at 230 V, 50 Hz, full load, at 100% dimming level) xx.x %</b>	20
<b>Electrical protection</b>	Class II
<b>Control gear required</b>	No
<b>Control gear type</b>	LED driver constant current
<b>Control gear mounting</b>	Remote
<b>Transformer required</b>	No
<b>Dimmable</b>	No
<b>Dimming method</b>	N/A
<b>Drive current (mA)</b>	300
<b>Inrush Current (A)</b>	17
<b>Inrush Duration (µs)</b>	199
<b>Glow Wire Test (°C)</b>	850
<b>Energy Efficiency Class (A-&gt;G) of contained light source</b>	E
<b>Nominal Frequency (Hz)</b>	50/60Hz
<b>Max. Luminaires per 10A C Breaker</b>	31
<b>Max. Luminaires per 13A C Breaker</b>	41
<b>Max. Luminaires per 16A C Breaker</b>	51

## Expospot 70 adjustable

*EXPOSPOT 70 ADJUSTABLE RA90 3000K MB BLACK*

2070027

Max. Luminaires per 20A C Breaker	70
Max. Luminaires per 10A B Breaker	19
Max. Luminaires per 13A B Breaker	25
Max. Luminaires per 16A B Breaker	31
Max. Luminaires per 20A B Breaker	42

### Lifetime data

Lifespan L70 B50	100000
Lifespan L80 B20	100000
Lifespan L90 B10	54500

### Physical data

Housing colour	Black
IP rating	IP20
IK rating	IK02
Diffuser finish	Other
Diffuser material	Other
Reflector finish	Other
Nominal Product Height (mm)	101
Nominal Product Diameter (mm)	137
Cutout Dimensions (W x L in mm or Diameter in mm)	126
Weight (kg)	0.52
Recessed Depth (mm)	101

### Packaging

Single packaging type	Carton
Product EAN number	5025768700271
Packaging single length / height (cm)	18.0
Packaging single width (cm)	18.0
Packaging single depth (cm)	16.0
DUN14 (outer)	05025768700271
Units per outer package	1
Packaging outer length / height (cm)	18.0
Packaging outer width (cm)	18.0
Packaging outer depth (cm)	16.0

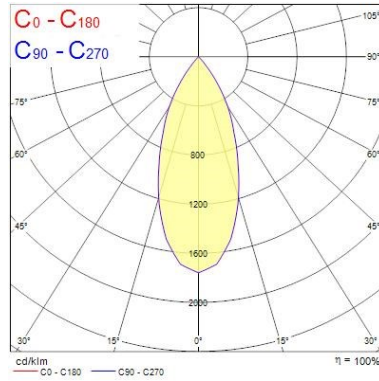
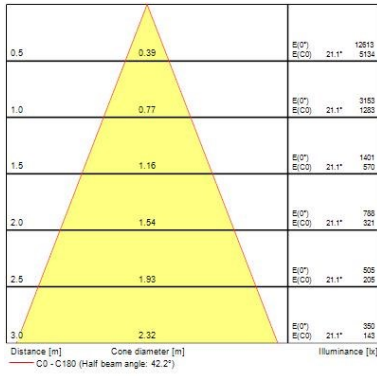
### Safety data

Optimal operating condition (°C)	1-25
----------------------------------	------

## PHOTOMETRY

## Expospot 70 adjustable

*EXPOSPOT 70 ADJUSTABLE RA90 3000K MB BLACK*  
2070027



## TECHNICAL DRAWINGS

