



Part Number : [2016060690](#)

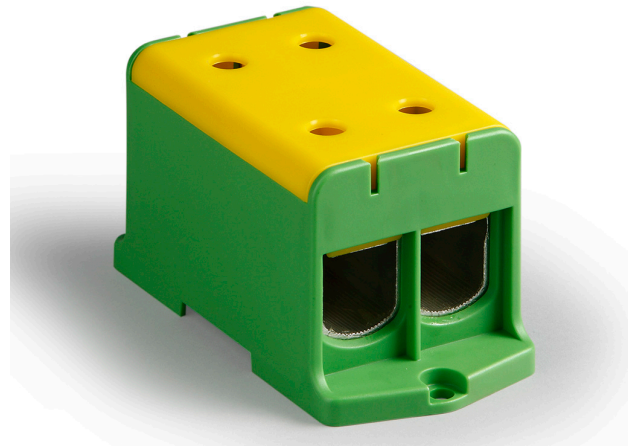
Product Description : High Current Universal Clamp Tapping Terminal Block, Screw Mount, 380.0A / 600V, Grey Housing and Cover, 1 Circuit, 4 Terminations

Series Number : 201606

Status : Active

Product Category : Terminal Blocks and Barrier Strip

Engineering Number : MX-KE69



Documents & Resources

Drawings


[Drawing 2016060690_sd.pdf](#)

3D Models and Design Files

[3D Model 2016060690_stp.zip](#)

Product Environment Compliance

Compliance

GADSL/IMDS	Not Relevant
China RoHS	
EU ELV	Not Relevant
Low-Halogen Status	Low-Halogen per IEC 61249-2-21
REACH SVHC	Not Contained per D(2023)3788-DC (14 Jun 2023)
EU RoHS	Compliant per EU 2015/863

[Multiple Part Product Compliance Statements](#)

- Eu RoHS
- REACH SVHC
- Low-Halogen

[Multiple Part Industry Compliance Documents](#)

- IPC 1752A Class C
- IPC 1752A Class D

- Molex Product Compliance Declaration
- IEC-62474
- chemSHERPA (xml)

EU RoHS Certificate of Compliance

Part Details

General

Status	Active
Category	Terminal Blocks and Barrier Strip
Series	201606
Description	High Current Universal Clamp Tapping Terminal Block, Screw Mount, 380.0A / 600V, Grey Housing and Cover, 1 Circuit, 4 Terminations
Application	Wire-to-Wire
Component Type	One Piece
Product Family	High-Current, Universal-Clamp Terminal Blocks
Product Name	Universal Clamp
Type	Universal Clamp
UPC	78172551156

Agency

UL	E48521
----	--------

Electrical

Current - Maximum per Contact	380.0A
Voltage - Maximum	600V

Physical

Circuits (Loaded)	1
Circuits (maximum)	1
Color - Resin	Gray
Entry Angle	Horizontal
Lock to Mating Part	None
Material - Metal	Aluminum

Material - Plating Mating	Tin
Material - Plating Termination	Tin
Material - Resin	Polyamide
Number of Rows	2
Orientation	Vertical
Panel Mount	Screws
Pitch - Mating Interface	N/A
Polarized to Mating Part	N/A
Stackable	No
Temperature Range - Operating	-40° to +105°C
Termination Interface Style	Screw
Wire Size (AWG)	2(2/0-2), 3(1/0-2), 500 MCM-3/0
Wire Size mm ²	2(33.60-67.00), 3(33.60-53.00), 85.00-253.35