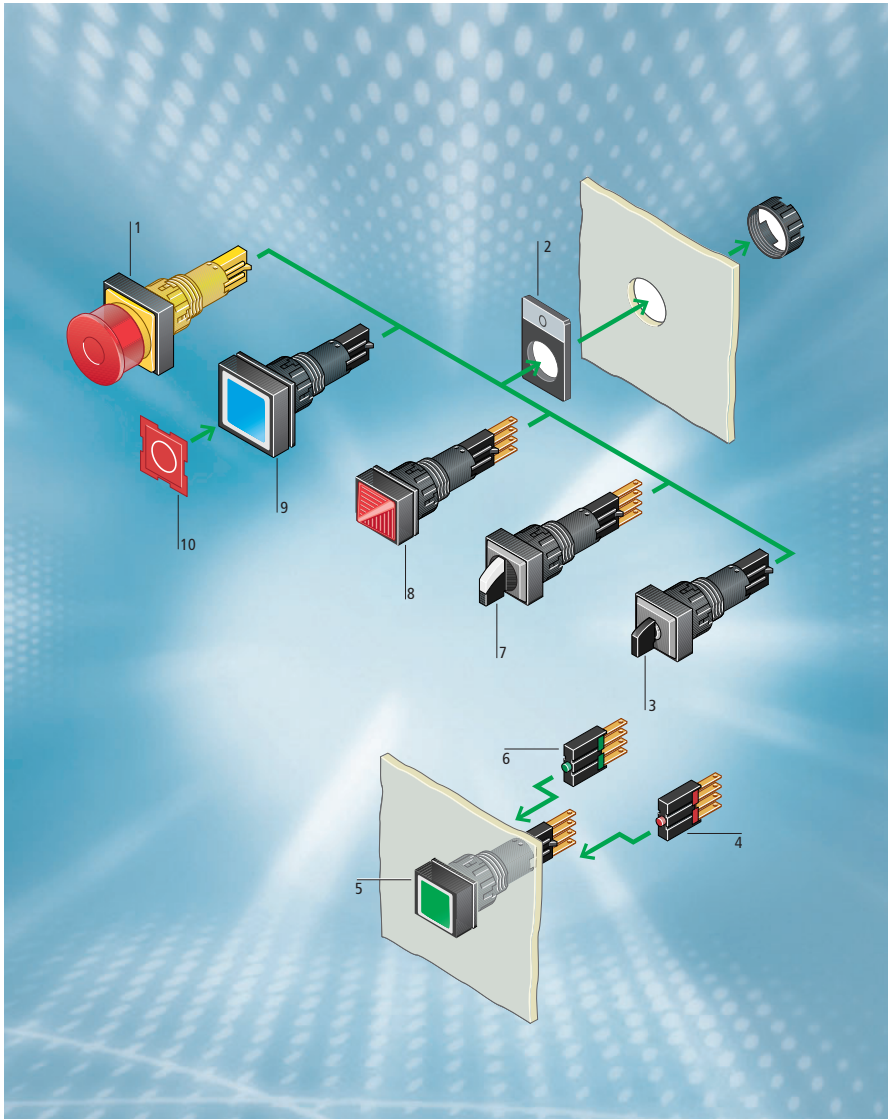


System Overview RMQ16



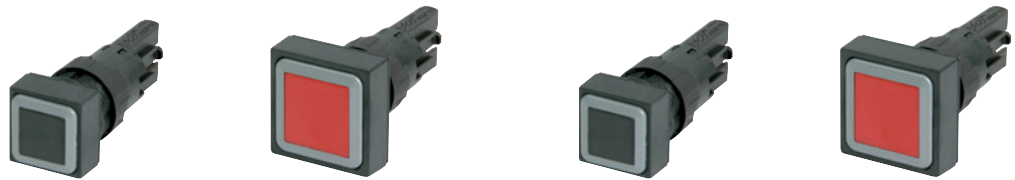
- 1 Emergency-stop button
- 2 Base plate
- 3 Key switch
- 4 Contact element break (red)
- 5 Illuminated push button
- 6 Contact element make (green)
- 7 Selector switch
- 8 Indicator light
- 9 Push-button
- 10 Button plate/insert label

Label mounts with insert plates offer additional labelling options. Secured via the front elements, both elements are simply bolted on from the rear of the flush mounting plate using a lock nut.

The RMQ 16 control circuit devices range can also be inscribed. The button plates as well as the lenses for the illuminated push buttons and the flat lenses for indicator lights are inscribed by laser (see page 282 for Label Editor information). Thus, even after years of use, the information they provide is still clear and unambiguous. These control circuit devices can be fitted with LEDs instead of filament bulbs. This means no more changing of bulbs, because LED service life equals machine life. The high degree of protection, IP 65, of the front elements ensures safe operation even in harsh environments. This makes RMQ16 ideally suitable for industrial applications.



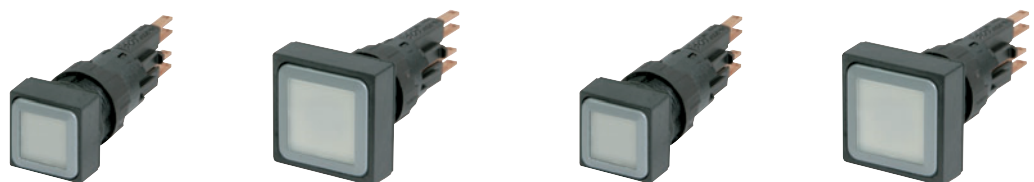
“Side by side mounting enables well ordered control panels on the smallest possible space.”



Push-button actuators

IP 65, NEMA 13

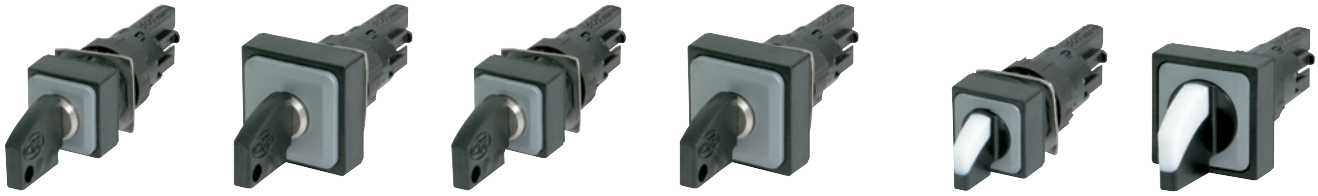
Button plates	18 x 18 mm Spring-return	25 x 25 mm Spring-return	18 x 18 mm Spring-return	25 x 25 mm Spring-return
	Q18D-11	Q25D-11		
	Q18D-10	Q25D-10		
	Q18D-20	Q25D-20		
	Q18D-19	Q25D-19		
	Q18D-SW	Q25D-SW	Q18DR-SW	Q25DR-SW
	Q18D-WS	Q25D-WS	Q18DR-WS	Q25DR-WS
	Q18D-GN	Q25D-GN	Q18DR-GN	Q25DR-GN
	Q18D-RT	Q25D-RT	Q18DR-RT	Q25DR-RT
	Q18D-GE	Q25D-GE	Q18DR-GE	Q25DR-GE
	Q18D-BL	Q25D-BL	Q18DR-BL	Q25DR-BL
Without	Q18D-X	Q25D-X	Q18DR-X	Q25DR-X



Illuminated push-button actuators

IP 65, NEMA 13
with 24 V filament lamp

Button lens	18 x 18 mm Spring-return	25 x 25 mm Spring-return	18 x 18 mm Spring-return	25 x 25 mm Spring-return
	Q18LT-WS/WB	Q25LT-WS/WB	Q18LTR-WS/WB	Q25LTR-WS/WB
	Q18LT-GN/WB	Q25LT-GN/WB	Q18LTR-GN/WB	Q25LTR-GN/WB
	Q18LT-RT/WB	Q25LT-RT/WB	Q18LTR-RT/WB	Q25LTR-RT/WB
	Q18LT-GE/WB	Q25LT-GE/WB	Q18LTR-GE/WB	Q25LTR-GE/WB
	Q18LT-BL/WB	Q25LT-BL/WB	Q18LTR-BL/WB	Q25LTR-BL/WB



Key-operated actuators			
IP 65, NEMA 13			
18 x 18 mm 2 positions	25 x 25 mm 2 positions	18 x 18 mm 3 positions	25 x 25 mm 3 positions
↘ ⁰ Q18S1	↘ ⁰ Q25S1	↙ ⁰ Q18S3	↙ ⁰ Q25S3
↘ ^{0,I} Q18S1R	↘ ^{0,I} Q25S1R	↘ ^{I,0,II} Q18S3R	↘ ^{I,0,II} Q25S3R
↘ ⁰ Q18S1R-A1	↘ ⁰ Q25S1R-A1	↘ ⁰ Q18S3R-A1	↘ ⁰ Q25S3R-A1
		↘ ^{I,0} Q18S3R-A2	↘ ^{I,0} Q25S3R-A2
		↘ ^{0,II} Q18S3R-A3	↘ ^{0,II} Q25S3R-A3
		↘ ^{I,0} Q18S3R-A4	↘ ^{I,0} Q25S3R-A4
		↘ ⁰ Q18S3R-A5	↘ ⁰ Q25S3R-A5
		↘ ^{0,II} Q18S3R-A6	↘ ^{0,II} Q25S3R-A6
		↘ ⁰ Q18S3R-A7	↘ ⁰ Q25S3R-A7

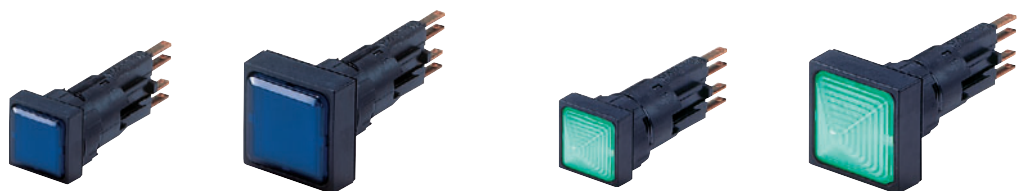
Selector switch actuators	
IP 65, NEMA 13	
18 x 18 mm 2 positions	25 x 25 mm 2 positions
↘ Q18WK1	↘ Q25WK1
↘ Q18WK1R	↘ Q25WK1R
3 positions	3 positions
↙ Q18WK3	↙ Q25WK3
↘ Q18WK3R	↘ Q25WK3R
↘ Q18WK3R1	↘ Q25WK3R1
↙ Q18WK3R2	↙ Q25WK3R2






↘ = Stay-put 45° ↘ = Spring-return 45°

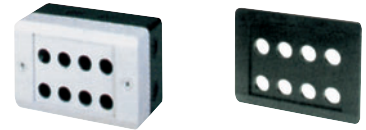
For further individual locking arrangements please enquire

↘ = Stay-put 45° ↘ = Spring-return 45°

I,0,II = Key can be withdrawn in the positions indicated



Indicator lights				
IP 65, NEMA 13 with 24 V filament lamp				
Lens	18 x 18 mm Flush	25 x 25 mm Flush	18 x 18 mm Extended	25 x 25 mm Extended
	Q18LF-WS/WB	Q25LF-WS/WB	Q18LH-WS/WB	Q25LH-WS/WB
	Q18LF-GN/WB	Q25LF-GN/WB	Q18LH-GN/WB	Q25LH-GN/WB
	Q18LF-RT/WB	Q25LF-RT/WB	Q18LH-RT/WB	Q25LH-RT/WB
	Q18LF-GE/WB	Q25LF-GE/WB	Q18LH-GE/WB	Q25LH-GE/WB
	Q18LF-BL/WB	Q25LF-BL/WB	Q18LH-BL/WB	Q25LH-BL/WB



Emergency-Stop actuators	
IP 65, NEMA 13 Tamper proof 25 x 25 mm	
Non-illuminated	illuminated by means of 24 V multiple LED
Q25PV	Q25LPV
Q25PV-S	Q25LPV-S

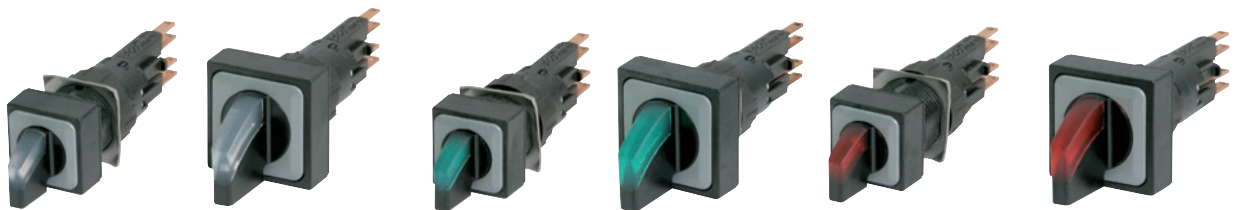
Emergency-Stop labels	
in four languages SQT11	
in four languages SRT11	
Blank SQ-GE	Blank SR-GE

Housing		
IP 65		
Locations	Surface mounting enclosures	Flush mounting panels
8	18	E 8
8		E 8-SW

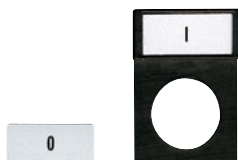










Contact elements			
⊕ = Positive opening safety function to IEC / EN 60 947-5-1			
N/O		N/C	
E10		E01	




Screw adapter		
1 x 1.5 mm ² 2 x 0.75 mm ²		
For N/O	For N/C	For lamp sockets
SRA10	SRA01	SRAL



Illuminated selector switches						
IP 65, NEMA 13 with 24 V filament lamp						
= Stay-put 45° = Spring-return 45°						
	18 x 18 mm 2 positions	25 x 25 mm 2 positions	18 x 18 mm 2 positions	25 x 25 mm 2 positions	18 x 18 mm 2 positions	25 x 25 mm 2 positions
	Q18LWK1-WS/WB	Q25LWK1-WS/WB	Q18LWK1-GN/WB	Q25LWK1-GN/WB	Q18LWK1-RT/WB	Q25LWK1-RT/WB
	Q18LWK1R-WS/WB	Q25LWK1R-WS/WB	Q18LWK1R-GN/WB	Q25LWK1R-GN/WB	Q18LWK1R-RT/WB	Q25LWK1R-RT/WB
	3 positions	3 positions	3 positions	3 positions	3 positions	3 positions
	Q18LWK3-WS/WB	Q25LWK3-WS/WB	Q18LWK3-GN/WB	Q25LWK3-GN/WB	Q18LWK3-RT/WB	Q25LWK3-RT/WB
	Q18LWK3R-WS/WB	Q25LWK3R-WS/WB	Q18LWK3R-GN/WB	Q25LWK3R-GN/WB	Q18LWK3R-RT/WB	Q25LWK3R-RT/WB
	Q18LWK3R1-WS/WB	Q25LWK3R1-WS/WB	Q18LWK3R1-GN/WB	Q25LWK3R1-GN/WB	Q18LWK3R1-RT/WB	Q25LWK3R1-RT/WB
	Q18LWK3R2-WS/WB	Q25LWK3R2-WS/WB	Q18LWK3R2-GN/WB	Q25LWK3R2-GN/WB	Q18LWK3R2-RT/WB	Q25LWK3R2-RT/WB




Additional labelling		
Insert plates	Label mounts, complete	
	10 x 22 mm	25 x 38 mm
	01SQ25	Q25TS-01
	02SQ25	Q25TS-02
	05SQ25	Q25TGE-05
	111SQ25	Q25TS-111
	110SQ25	Q25TS-110
	10SQ25	Q25TS-10
	11SQ25	Q25TS-11
	without	Q25TS-X
Additional texts and symbols	See Industrial Switchgear Main Catalogue	

Cover plate	
IP 65	
For surface mounting enclosures and flush mounting panels	25 x 38 mm
	Q25AS
	Q25AGR
	Q25AGE

Laser inscription
Labelling plates
See Industrial Switchgear Main Catalogue



Blanking plug, IP 65		
	18 x 18 mm	25 x 38 mm
	Q18BS	Q25BS

Lights			
Socket Wedge Base W2x4,6d Positive pole connected to X1			
Filament lamps	6 V / 1 W	12 V / 1 W	24-28 V / 1 W
	WBGL6	WBGL12	WBGL24
LEDs (AC / DC)	6 V / 45 mA	12 V / 24 mA	18-30 V / 7-12.5 mA
	–	–	LEDWB-W
	WBLED-GN6	WBLED-GN12	LEDWB-G
	WBLED-RT6	WBLED-RT12	LEDWB-R
	WBLED-GE6	WBLED-GE12	LEDWB-Y
	–	–	LEDWB-B