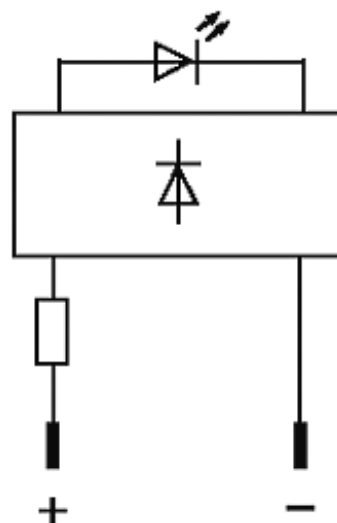


LED-INDICATOR OPAC / RED

LED-24V IP65

(red)
24 V AC/DC

The modules are suitable for wall thickness of 1.5...5.0 mm.

[Link to Product](#)**Illustration**

Product may differ from Image

Technical DataOperating voltage 24 V AC/DC $\pm 15\%$

Current consumption	10 ±2 mA
---------------------	----------

Protection acc. to (IEC 60529/EN 60529)	IP65
---	------

General data

Housing	Plastic, flame retardant
---------	--------------------------

LED Ø	5 mm
-------	------

Front panel hole diameter Ø	9 mm
-----------------------------	------

Connection	Faston 2.8 × 0.8 mm
------------	---------------------

Temperature range	-20...+50 °C
-------------------	--------------

Commercial data

country of origin	CZ
-------------------	----

customs tariff number	85414010
-----------------------	----------

minimum order quantity	10
------------------------	----