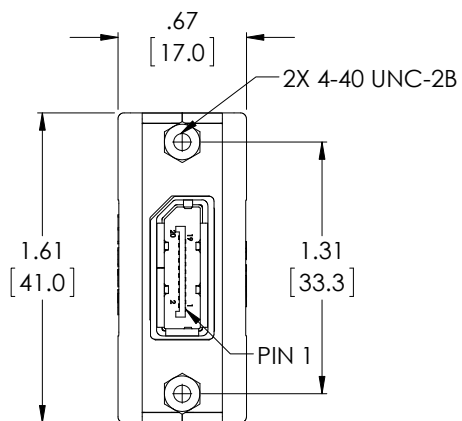
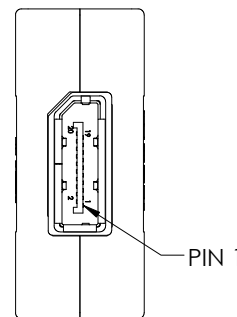
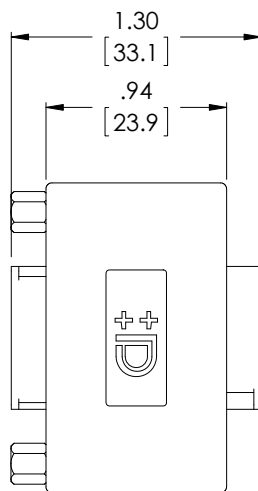


THE INFORMATION CONTAINED IN THIS DRAWING IS THE SOLE PROPERTY OF L-COM, INC. ANY REPRODUCTION IN PART OR WHOLE WITHOUT THE WRITTEN PERMISSION OF L-COM, INC. IS PROHIBITED.

REVISIONS			
REV	DESCRIPTION	DATE	APPROVED
E	ECN 7162: REVISED 1.37" OVERALL LENGTH TO 1.30". UPD ROHS NOTE	11/15/13	D. DESJARDIN
F	ECN 7402: WIRING WAS STRAIGHT THROUGH. CORRECTED WIRE MAP.	04/23/14	D. DESJARDIN

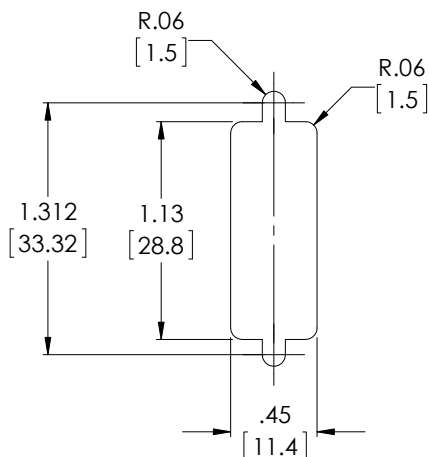


"J1"  
2X, FEMALE  
DISPLAYPORT

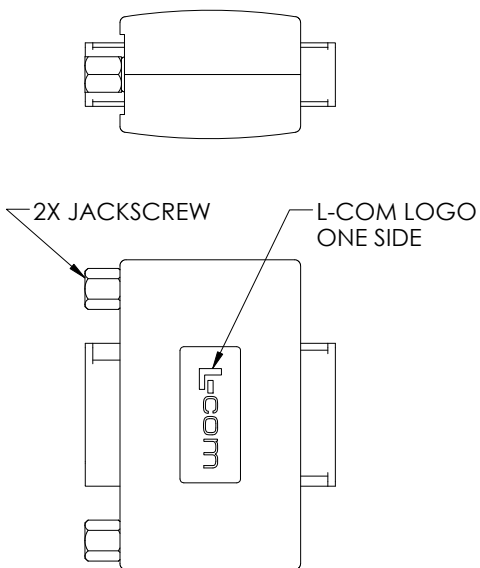


"J2"

WIRING MAP	
"J1"	"J2"
12	1
11	2
10	3
9	4
8	5
7	6
6	7
5	8
4	9
3	10
2	11
1	12
13	13
14	14
15	15
16	16
17	17
18	18
19	19
20	20
SHELL	SHELL



RECOMMENDED  
PANEL CUTOUT



**NOTES:**

1. COMPONENT SHALL BE TESTED FOR CONTINUITY.
2. COMPONENT SHALL BE INDIVIDUALLY PACKAGED IN ACCORDANCE WITH L-COM SPECIFICATION PS-0031.
3. ALL DIMENSIONS ARE FOR REFERENCE ONLY.

**REGULATORY COMPLIANCE:**  
CE2011/65/EU(RoHS DIRECTIVE)

UNLESS OTHERWISE SPECIFIED, DIMENSIONS ARE IN INCHES [mm] OVERALL CABLE LENGTH TOLERANCE: ≤12 [305] = +1 [25] / -0 >12 [305] ≤60 [1524] = +2 [51] / -0 >60 [1524] ≤120 [3048] = +4 [102] / -0 >120 [3048] ≤300 [7620] = +6 [152] / -0 >300 [7620] = +5% / -0%	APPROVALS	DATE		45 BEECHWOOD DRIVE NORTH ANDOVER, MA 01845
	DRAWN BY D. PARHAM	12/22/2010		CATEGORY
ALL OTHER DIMENSIONAL TOLERANCES: .X = ±.2 [5.08] .XX = ±.02 [1.51] .XXX = ±.005 [1.13]	CHECKED BY D. CASTRO	12/22/2010	PRODUCT DESCRIPTION	
	APPROVED BY P. McNEIL	12/22/2010	DISPLAYPORT PNL ADAPT F-F	
PROJECTION	CONFIGURATION DETAILS OF UNDIMENSIONED FEATURES MAY VARY		SIZE <b>A</b>	FSCM NO. <b>43321</b>
	COLOR VARIATIONS MAY OCCUR		DWG. NO. DP-FF	REV. <b>F</b>
SCALE: NONE			CAD FILE: DP-FF.SLDDRW	
			SHEET 1 OF 1	