



Part Number : [1061151120](#)

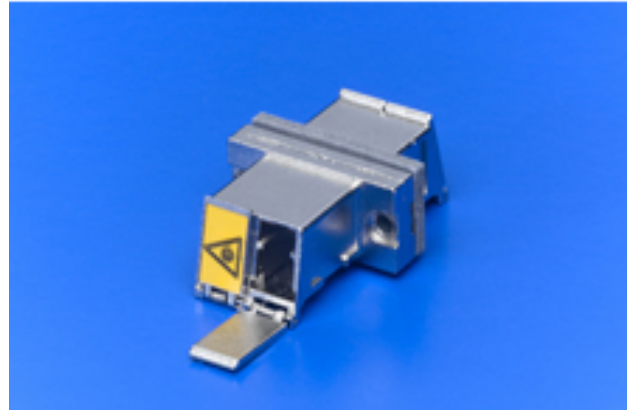
Product Description : EMI LC Adapter, Duplex, Metal Body, Ceramic Alignment Sleeve, Screw Mount Style, Shutter Both Sides

Series Number : 106115

Status : Active

Product Category : Fiber Optic Adapters

Engineering Number : 861151120



Documents & Resources

Drawings

[Drawing 1061151120_sd.pdf](#)

Product Environment Compliance

Compliance

| | |
|--------------------|--|
| GADSL/IMDS | Not Relevant |
| China RoHS | |
| EU ELV | Not Relevant |
| Low-Halogen Status | Low-Halogen per IEC 61249-2-21 |
| REACH SVHC | Not Contained per D(2022)9120-DC (17 Jan 2023) |
| EU RoHS | Compliant per EU 2015/863 |

Multiple Part Product Compliance Statements

- Eu RoHS
- REACH SVHC
- Low-Halogen

Multiple Part Industry Compliance Documents

- IPC 1752A Class C
- IPC 1752A Class D
- Molex Product Compliance Declaration
- IEC-62474
- chemSHERPA (xml)

Part Details

General

| | |
|----------------|---|
| Status | Active |
| Category | Fiber Optic Adapters |
| Series | 106115 |
| Description | EMI LC Adapter, Duplex, Metal Body, Ceramic Alignment Sleeve, Screw Mount Style, Shutter Both Sides |
| Component Type | EMI Shielding |
| Mode | Multimode, Singlemode |
| Product Family | Optical EMI Shielding Adapters |
| Product Name | LC |
| Type | Adapter |
| UPC | 822350276900 |

Electrical

| | |
|-------------|------------|
| Shield Type | EMI Gasket |
| Shielded | Yes |

Physical

| | |
|-------------------------------|---------------|
| Alignment Sleeve | Ceramic |
| Angled Physical Contact (APC) | N/A |
| Color - Resin | N/A |
| Ferrule Material | Ceramic |
| Gender | Female-Female |
| Material - Housing | Die-Cast |
| Mounting Style | Screws |
| Net Weight | 13.264/g |
| Orientation | Straight |
| Panel Mount | With Flange |
| Ports | 2 |
| Shutter | Both Sides |

Solder Process Data

| | |
|------------------------------|-----|
| Lead-Free Process Capability | N/A |
|------------------------------|-----|

Mates With / Use With

Mates with Part(s)

| Description | Part Number |
|----------------------|---------------|
| LC Connectors | <u>106024</u> |
| LC Duplex Connectors | <u>106025</u> |
| LC APC Connectors | <u>106090</u> |

This document was generated on Sep 26, 2023