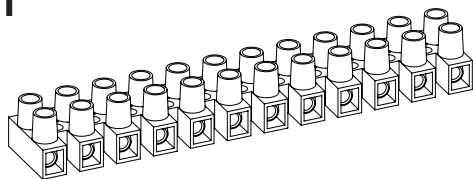


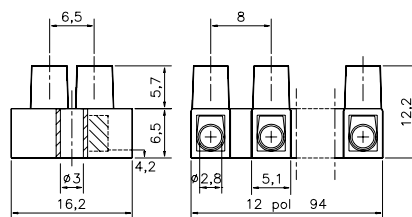
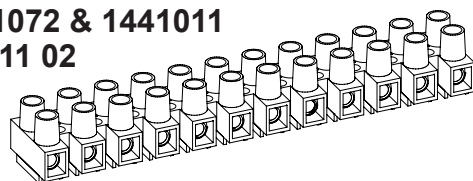
Terminal Blocks
KlemrækkerKopplingsplint
StandardAnschlußklemmen
Morsettiere a Vite

EN 60998-2-1 CE

HE1

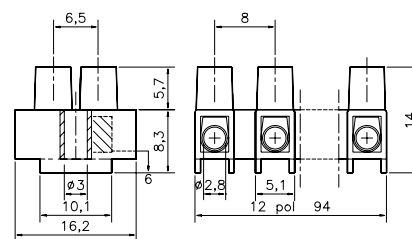
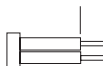


Description	Poles	Insert	Article No.
HE1 12-poles	12	Std.	0011N1210
HE1 WPR 12-poles	12	WPR	0011W1210
HE1 BA 12-poles	12	BA	0011B1210
HE1 2-poles	2	Std.	0011N0210

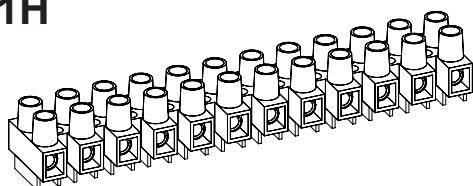
HE1N
1441072 & 1441011
14 411 02

Description	Poles	Insert	Article No.
HE1N 12-poles	12	Std.	0012N1210
HE1N WPR 12-poles	12	WPR	0012W1210
HE1N BA 12-poles	12	BA	0012B1210
HE1N 3-poles	3	Std.	0012N0310
HE1N MS 12-poles	12	Std.	0012N1210MS

Stripping Length
Skalning
Abisolierlänge
4,5 - 5 mm

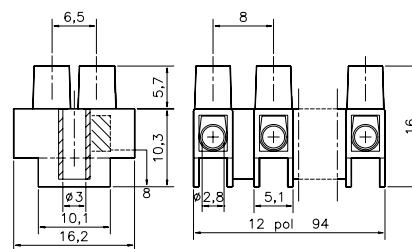


HE1H



Description	Poles	Insert	Article No.
HE1H 12-poles	12	Std.	0013N1210
HE1H WPR 12-poles	12	WPR	0013W1210
HE1H BA 12-poles	12	BA	0013B1210
HE1H WPR 4-poles	4	WPR	0013W0410

Torque:
Recommended 0,35 Nm
Max. 0,4 Nm



TECHNICAL DATA

TEKNISKA DATA

TECHNISCHE ANGABEN

Voltage	Fixing centres	Cable size
Märkspänning	Delningsmätt	Area
Nennspannung	Rastermass	Nennquerschnitt

400 V	8 mm	1 - 2,5 mm ²
-------	------	-------------------------

UL HE1 300V / HE1H 600V

Current	Working temperature	Insulation material
Märkström	Arbetstemperatur	Isolationsmaterial
Nennstrom	Dauertemperatur	Isoliermaterial

6 A / UL 20 A	85°C UL 120/125°C	PA 66/6 PA66 V0
---------------	-------------------	-----------------

Insert	Screw M2,6
Tinned Brass	Steel bluechromated
Hylsa	Skruv M2.6

Mässing förtent	Stål blåkromatiserad
Klemmkörper	Schraube M2.6
Messing verzinkt	Stahl blauchromatiert
AWG	

24-10 SOL / 24-12 STR

Approvals Godkännanden Genehmigungen

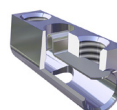
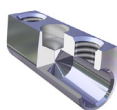
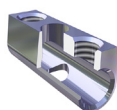
HE1	HE1N	HE1H
NEMKO	NEMKO	NEMKO
FI	FI	FI
CE	CE	CE
DEMKO	DEMKO	DEMKO
SEMKO	SEMKO	SEMKO
UL  Canada		UL  Canada

Standard
Insert
Inlägg
Klemmkörper

Type BA
Insert Barrier
Inlägg Barriär
Klemmkörper Barriere

Type WPR
Insert Wire protector
Inlägg Trådskydd
Klemmkörper Drahtschutz

HFM
Hot Foil Marking
Märkning
Bezeichnung



The terminal block can be supplied with wire protector **WPR** or with barrier inserts **BA**, hot foil marking **HFM** or Brass Screws **MS**.

Dessa plintar kan levereras med trådskydd **WPR** eller med barriär inlägg **BA**, samt Mässingskrav **MS** och märkning **HFM** direkt på plinten. Die Klemmen können auf Wunsch mit Drahtschutz **WPR**, Klemmkörper mit Barriere **BA**, oder mit Messingschrauben **MS** und Bezeichnung **HFM** geliefert werden.