



## Double N/O contact, Cage Clamp

Part no. **M22-CK20**


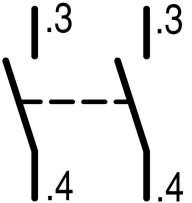
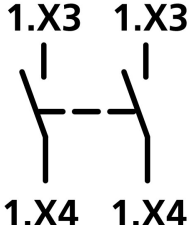
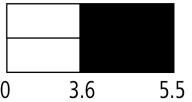
Article no. **107898**



Powering Business Worldwide™

General trip indication '+', when tripped by voltage release, overload release, short-circuit release or by the residual-current release due to residual-current.



### Program

Range			RMQ-Titan (drilling dimensions 22.5 mm)
Basic function			Accessories
Range			Accessories
Accessories			Standard auxiliary contact, trip-indicating auxiliary switch
Standard/Approval			UL/CSA, IEC
Construction size			NZM1/2/3/4
Single unit/Complete unit			Element
Connection technique			Cage Clamp
Fixing			Front fixing
Description			When using emergency switching off actuators M22-PV... max. 2 contact elements = 4 NC / N/O contacts
Auxiliary contacts:  = safety function, by positive opening to IEC/EN 60947-5-1			
N/O = Normally open			2 S
Contact sequence			
Contact sequence			
Contact travel diagram, stroke in connection with front element			
Protection type			IP20
Connection to SmartWire-DT			no
Connection type			Double contact
Description standard auxiliary contact HIN			<p>Switching with the main contacts Used for indicating and interlocking tasks.</p> <p>Can be used with NZM1 circuit-breaker: a standard auxiliary contact can be clipped into the circuit-breaker.</p> <p>Can be used with NZM2 size circuit-breaker: a standard auxiliary contact can be clipped into the circuit-breaker.</p> <p>Can be used with NZM3, 4 circuit-breaker: up to three standard auxiliary contacts can be clipped into the circuit-breaker.</p> <p>Any combinations of the auxiliary contact types are possible.</p> <p>Marking on switch: HIN.</p> <p>On combination with remote operator NZM-XR... the right mounting location of standard auxiliary contact HIN can be fitted only with individual contacts.</p>
For use with			NZM1(-4), 2(-4), 3(-4), 4(-4) PN1(-4), 2(-4), 3(-4)

## Approbationen

UL approval	Yes
CSA approval	Yes
Product Standards	IEC/EN 60947-5; UL 508; CSA-C22.2 No. 14-05; CSA-C22.2 No. 94-91; CE marking
UL File No.	E29184
UL CCN	NKCR
CSA File No.	012528
CSA Class No.	3211-03
NA Certification	UL listed, CSA certified
Degree of Protection	UL/CSA Type: -

## General

Standards			IEC/EN 60947 VDE 0660
Operating frequency	Operations/ h		 3600
Actuating force		n	 10
Protection type			IP20
Climatic proofing			Damp heat, constant to IEC 60068-2-78 Damp heat, cyclic to IEC 60068-2-30
Ambient temperature		°C	
Open		°C	- 25 - + 70
Mounting position			As required
Mechanical shock resistance		g	30 Shock duration 11 ms Sinusoidal according to IEC 60068-2-27
Terminal capacities		mm <sup>2</sup>	
Solid		mm <sup>2</sup>	0.5 - 1.5
Stranded		mm <sup>2</sup>	0.5 - 1.5
Flexible with ferrule		mm <sup>2</sup>	0.5 - 1.0

## Contacts

Rated impulse withstand voltage	U <sub>imp</sub>	V AC	4000
Rated insulation voltage	U <sub>i</sub>	V	250
Overvoltage category/pollution degree			III/3
Max. short-circuit protective device			
Fuseless		Type	PKZM0-10/FAZ-B6/1
Fuse	gG/gL	A	10

## Switching capacity

Rated operational current	I <sub>e</sub>	A	
AC-15			
115 V	I <sub>e</sub>	A	4
230 V	I <sub>e</sub>	A	4
DC-13			
24 V	I <sub>e</sub>	A	3
42 V	I <sub>e</sub>	A	1
60 V	I <sub>e</sub>	A	0.8
110 V	I <sub>e</sub>	A	0.5
220 V	I <sub>e</sub>	A	0.2

## Auxiliary contacts

Rated operational voltage	U <sub>e</sub>	V	
Rated operational voltage	U <sub>e</sub>	V AC	230
Rated operational voltage, max.	U <sub>e</sub>	V DC	220
Conventional thermal current	I <sub>th</sub> =I <sub>e</sub>	CSA	4
Rated operational current	I <sub>e</sub>	A	

Different rated operational currents when used as auxiliary contact for NZM circuit-breaker				bei AC = 50/60 Hz	M22- K...	M22- CK...	XHIV			
								Bemessungsbetriebsstrom	le	A
				AC-15	15	A	4	4	4	
				V	230	le	A	4	4	4
				V	400	le	A	2	-	2
				V	500	le	A	1	-	1
				DC-13	4	le	A	3	3	3
				V	42	le	A	1.7	1	1.5
				V	60	le	A	1.2	0.8	0.8
				V	110	le	A	0.8	0.5	0.5
				V	220	le	A	0.3	0.2	0.2
Short-circuit protection										
max. fuse		A gG/ gL	10							
Max. miniature circuit-breaker		A	FAZ-B6/B1							
Operating times										
Terminal capacities		mm <sup>2</sup>								
Solid or flexible conductor with ferrule		mm <sup>2</sup>	1 x (0.5 - 1.5) 2 x (0.5 - 0.75)							
		AWG	1 x (20 - 18) 2 x (20 - 18)							
Other technical data (sheet catalogue)			Maximum equipment and position of the internal accessories							
Indoor and protected outdoor installation										

## Technical data according to ETIM 4.0

Suitable for earth leakage circuit breaker			No
Type of electric connection			Spring clamp connection
Rated operation current I <sub>e</sub> at AC-15, 230 V		A	6
Mounting type			Front mount
Suitable for pendant switch			No
Suitable for front element			YES
Suitable for circuit-breakers			No
Suitable for safety position switches			No
Suitable for step switches			No
Suitable for pressure switch/selector switch actuator			YES
Suitable for cam switches			No
Suitable for motor protective circuit breakers			No
Suitable for series-mounting relays			No
Suitable for solenoid			No
Suitable for compact switch-disconnector			No
Suitable for miniature circuit-breakers			No
Suitable for pulse relay			No
Suitable for contactor relay relay			No
Suitable for pendant pushbutton			No

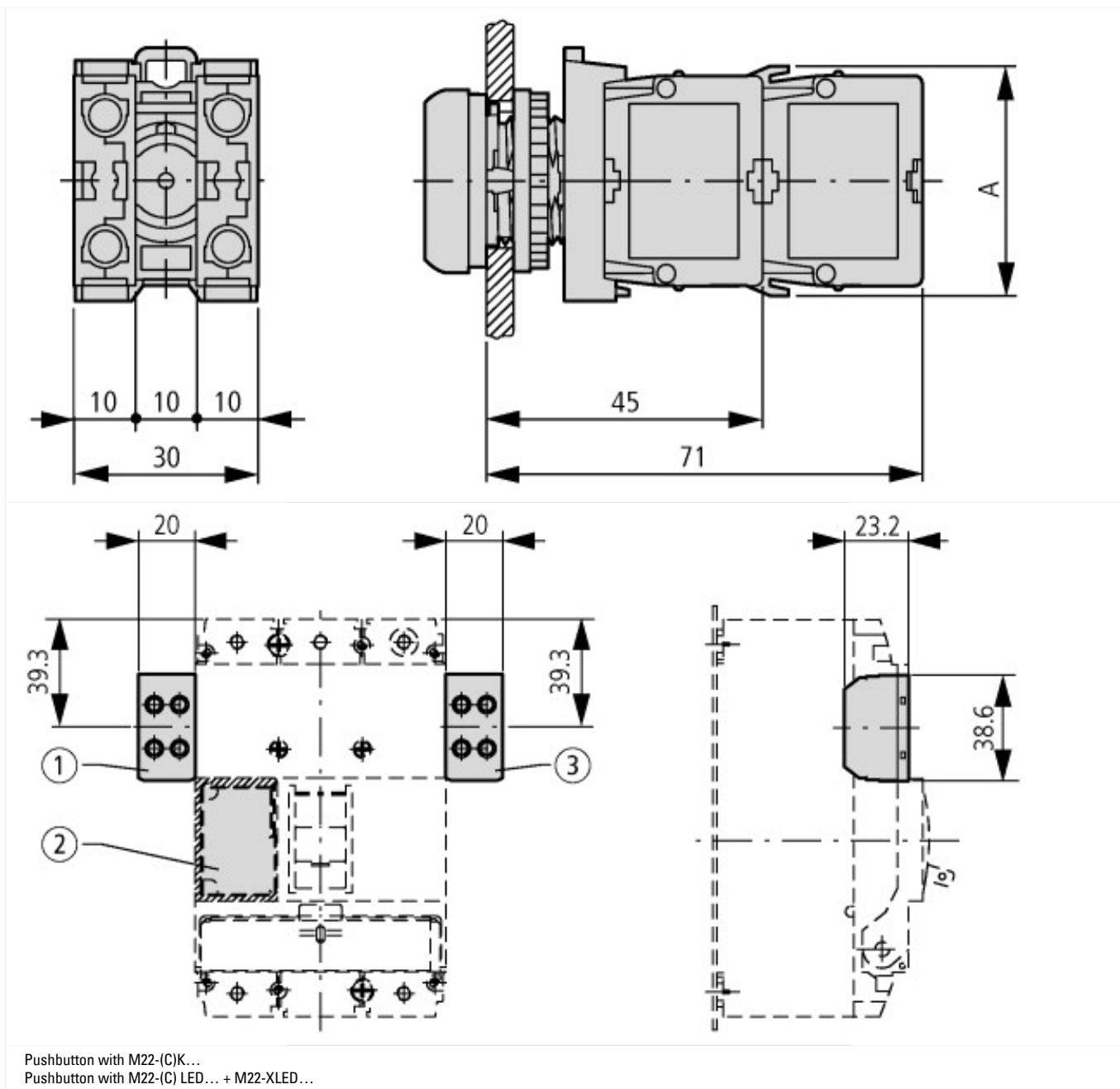
Suitable for residual current device		No
Number of contacts as change-over contact		0
Number of contacts as N/O		2
Number of contacts as NC		0
Suitable for impulse relays		No
Suitable for position switches		No
Suitable for switch-disconnector/residual current device		No
Suitable for contactors		No
Suitable for installation contactor / installation relay		No

## CAD-Data

Product standards CAD data:

<http://eaton-moeller.partcommunity.com>

## Dimensions



## Additional product information (links)

IL04716002Z (AWA1160-1745) RMQ-Titan System

[ftp://ftp.moeller.net/DOCUMENTATION/AWA\\_INSTRUCTIONS/IL04716002Z2011\\_03.pdf](ftp://ftp.moeller.net/DOCUMENTATION/AWA_INSTRUCTIONS/IL04716002Z2011_03.pdf)

### Engineering

equipped with auxiliary switches, time differences

[ftp://ftp.moeller.net/DOCUMENTATION/PDF/GB/PRO\\_NZM\\_time difference\\_D.PDF](ftp://ftp.moeller.net/DOCUMENTATION/PDF/GB/PRO_NZM_time difference_D.PDF)