

## reducing sleeve

With cooling canal along the location hole

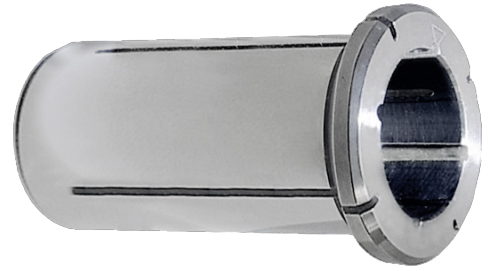
**ATORN**<sup>®</sup>

### Application

For reducing the clamping diameter. For drilling, reaming, milling and tool sharpening.

### Version

- Slotted and polished
- Concentricity tolerance  $\leq 3\mu\text{m}$
- Concentricity tolerance  $\leq 3\mu\text{m}$



<b>Art. No.</b>	<b>23336 621</b>
<b>Chuck clamping diameter</b>	32 mm
<b>Clamping diameter</b>	8 mm
<b>Collar diameter</b>	36 mm
<b>Insertion depth</b>	36 mm
<b>Max. insert depth</b>	60 mm
<b>Length</b>	64 mm
<b>Coolant supply</b>	KKB

### EAN-Code

4050293436846