

## Enables shooting and operation in any outdoor environment An outdoor 4K integrated remote camera for capturing the decisive moment

### High-precision video recording that does not miss any key scenes, even in large venues

Thanks to a significant update from the AW-HR140, the wide-angle lens 4K/60p support, 24x optical zoom, and 10x digital zoom.

The camera supports 4K/60p, 24x optical zoom, and 10x digital zoom. Three types of image stabilization, OIS, EIS, and D.I.S.S. (Dynamic Image Stabilizing System), suppress even low-frequency large-amplitude shaking.

High-precision video recording is possible regardless of the installation environment, allowing the camera to capture a bird's-eye view of large stadiums and other venues while firmly targeting highlight scenes.

### Durability to withstand the harshest of environments

The camera can withstand environments susceptible to salt damage, such as shooting news footage at an airport, broadcasting video in a warehouse district by the sea, and shooting footage from a large ship, as well as shooting live broadcast video that is susceptible to rain, wind, snow, and ultraviolet rays, and it is sealed to prevent yellow sand and flying sand and durable enough to withstand seismic vibration. The reliable durability recognized by the HR140 has been preserved while the shooting performance has been improved, enabling high-quality video recording in harsh environments where it is difficult for staff to shoot.

### Flexibility in constructing systems with a wide variety of I/Os

In response to the diversification of outdoor shooting, the AW-UR100 is now equipped with a video transmission I/F that can support major baseband transmissions such as 3G-SDI, 12G-SDI, Fiber, etc. It is also compatible with a variety of IP protocols such as NDI and SRT. The camera also offers flexibility to match the shooting environment and existing video production system, and can be used for recording, editing, streaming, and a wide range of other purposes to suit the installation environment and purpose, further expanding the range of expression and use of video shot outdoors.



# Versatile performance that expands the possibilities of outdoor shooting

## Compatible with 4K/60p shooting

Supports 4K60p. Even in scenes with intense motion, natural smoothness and color can be recorded in high definition and high image quality.

## Built-in cropping function

It is possible to crop a portion of the video shot in 4K. One of up to three cropping positions can be specified, and the AW-UR100 can be easily accessed and operated from the remote camera controller AW-RP150GJ/RP60GJ or a PC.

## 24x optical zoom/74.1° horizontal

The wide-angle lens provides a wide shooting range, allowing this single unit to capture a wide range of angles of view.

## Three types of image stabilization, OIS, EIS, and D.I.S.S.

The camera is equipped with three types of image stabilization, optical image stabilization (OIS), electronic image stabilization (EIS), and Dynamic Image Stabilizing System (D.I.S.S.) to ensure image capture regardless of the installation environment.

## Durability for Continuous Shooting Even in Harsh Environments

Paint and resin that are resistant to heavy salt, corrosion, water, and ultraviolet rays are used to ensure sealing that complies with IP65 standards, and the camera offers rigidity that will not break even in wind speeds of 50 m/sec, providing durability that is unaffected by external factors.

## Flexibility in System Construction

Equipped with video transmission IFs that can support major baseband transmissions such as 3G-SDI, 12G-SDI, and Fiber. Major IP transmissions such as NDI, SRT, and RTMP are also supported, allowing utilization in existing system environments.



## Accessories



### Remote Camera Controller AW-RP150GJ

High operability is realized with a touch panel GUI and a joystick for camera control.



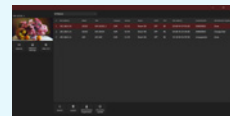
### Remote Camera Controller AW-RP60GJ

Features a highly visible GUI menu screen and a joystick for intuitive operation.



### Visual preset software key AW-SF300G

Features a highly visible GUI menu screen and a joystick for intuitive operation.



### Free software EasyIP Setup Tool Plus

Free software to manage various network settings and firmware version upgrades in one place.

## AW-UR100

\* This specification is only a partial list, please check our website for details.

Comprehensive	
Power source	DC12V~21.8±10%(10.8V~24.0V)
PoE++	IEEE802.3bt compliant: DC42~57V (camera end) (Compatible with software authentication (LLDP communication))
Operating ambient temperature	-15 °C~45 °C (5 °F to +113 °F)*1
Operating ambient humidity	10%~100%*2
Finish	Silver, salt damage resistance treatment
Waterproof and dustproof	JIS C0920 protection class IP65 compliant
Maximum allowable wind velocity	15 m/sec: Normal operation, 50 m/sec: Operable, 60 m/sec: Non-destructive
Installed as standard	Wiper, Heater, Defroster
Camera part	
Image Sensors	1/2.5 type 4K MOSx1
Effective pixels	Approx. 8.29 megapixels
Lens	Motorized 24x optical zoom F1.8~F4.0 (f=4.12 mm - 98.9 mm, 35 mm equivalent: 25.0 mm - 600.0 mm) i.Zoom (UHD: 28x, FHD: 36x) (*Switching between 24x optical ⇒ i.Zoom ⇒ Digital Zoom) D.Extender (1.4x, 2x), 10x digital zoom
Angle of view range	Horizontal: 74.1°(wide) - 3.3°(tele) Vertical: 46.0°(wide) - 1.9°(tele) Diagonal: 81.8°(wide) - 3.8°(tele)
Output format (UHD/FHD SDI)	<b>4K</b> 2160/59.94p, 2160/50p, 2160/29.97p(Native), 2160/25p(Native), 2160/24p(Native), 2160/23.98p(Native) <b>HD</b> 1080/59.94p, 1080/50p, 1080/29.97p(Native), 1080/29.97PsF, 1080/25p(Native), 1080/25PsF, 1080/23.98p over 59.94i, 1080/24p(Native), 1080/23.98p(Native), 1080/23.98PsF, 1080/59.94i, 1080/50i, 720/59.94p, 720/50p
Image stabilization	OIS 2-axis + Hybrid method of roll direction correction MENU switching: select between OFF/OIS/Hybrid (Stable)/Hybrid (Pan/Tilt) and ON/OFF of D.I.S.S.
Input	
DC IN	DC 12 V IN, G/L IN (BNC)
G/L IN	Supports BBS (Black Burst Sync) and tri-level synchronization
Output	
SFP+	SFP+ compliant (Single Fiber)*3
12G SDI OUT	SMPTTE2082-1/SMPTTE424M/SMPTTE292M / 75 Ω(BNCx1) *4
3G SDI OUT	SMPTTE424M/SMPTTE292M / 75 Ω(BNCx1) *4
Input-output	
LAN	LAN terminal for IP control (RJ-45)
RS-422	CONTROL IN RS422A (RJ-45)
DSUB 9pin	<ul style="list-style-type: none"> <li>Washer control output terminal</li> <li>Compatible with Mikami washer unit (#1: Washer_HOT, #6: Washer_COLD)</li> <li>MIC/LINE Input terminals (#5: CH1-HOT, #4: CH1-COLD, #3:CH1-GND, #9: CH2-HOT, #8: CH2-COLD, #7:CH2-GND)</li> <li>MIC/LINE Input Compatible (SDI/IP), AAC compatible (compatible with IP only), Balanced input 2ch</li> <li>During MIC input Input level: -40 dBu, Input impedance: Approx. 10 kΩ Phantom power compatible, supply voltage: 47 V ± 2 V</li> <li>During LINE input Input level: 0 dBu, Input impedance: Approx. 10 kΩ Input volume variable range: -30 dB to 20 dB (1 dB step)</li> <li>Embedded audio output level: -12 dBFS</li> <li>Sampling frequency: 48 kHz</li> <li>Quantization bit rate: 24bit (SDI), 16bit (IP)</li> </ul>
IP Streaming	
JPEG(MJPEG), H.264	3840×2160, 1920×1080, 1280×720, 640×360, 320×180
H.265	3840×2160, 1920×1080, 1280×720, 640×360
High Bandwidth NDI	3840×2160, 1920×1080, 1280×720
NDI HX Version 2	1920×1080, 1280×720

\*1 Preheating required for temperatures below -5°C (1H). \*2 Storage humidity: 10% to 95% (no condensation). \*3 The signal to be sent out is the same as 12G SDI OUT. Optical signal input is not supported. \*4 Compatible with Level-A/Level-B



For more information, please visit Panasonic web site  
[https://pro-av.panasonic.net/en/products/ptz\\_camera\\_systems.html](https://pro-av.panasonic.net/en/products/ptz_camera_systems.html)

## Panasonic Connect Co., Ltd.

2-15 Matsuba-cho, Kadoma, Osaka 571-8503 Japan

SP-UR100WEB 202308SP



Factories of Panasonic Connect Co., Ltd. have received ISO14001:2015-the Environmental Management System certification. (Except for 3rd party's peripherals.)