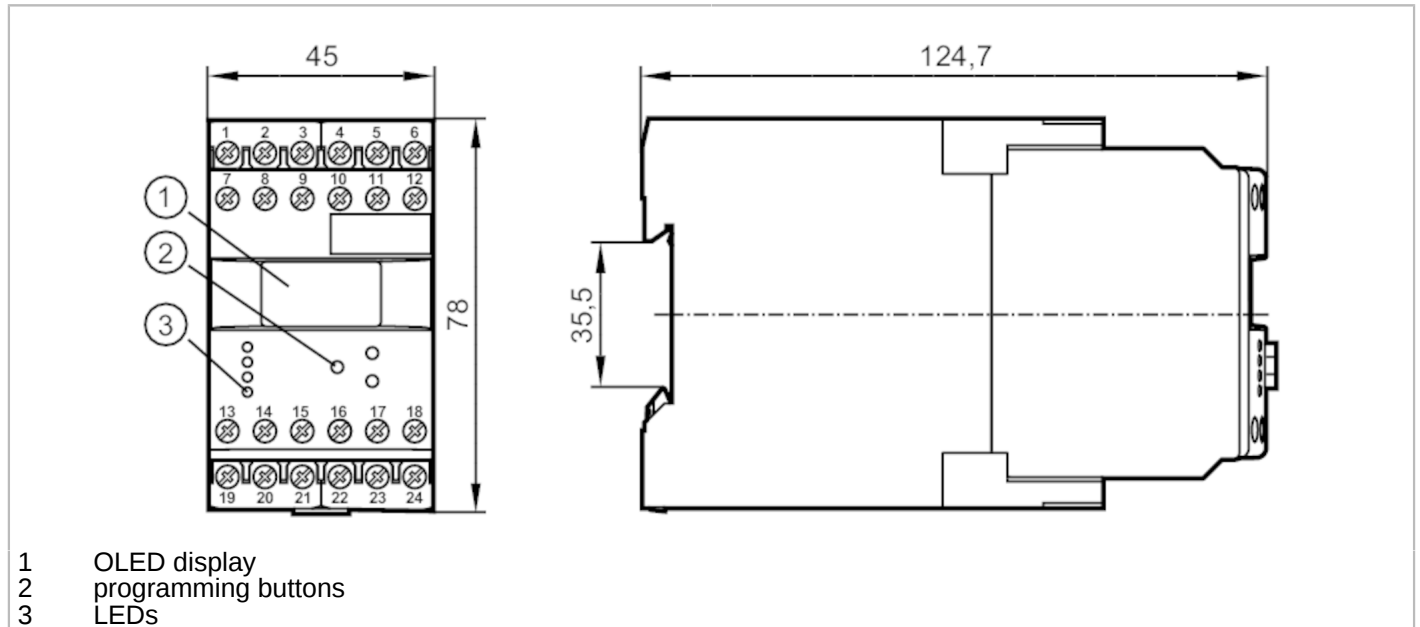




## Evaluation unit for slip and synchronous monitoring

MONITOR/FS-2 /110-240VAC/DC



- 1 OLED display
- 2 programming buttons
- 3 LEDs



| Product characteristics         |  |
|---------------------------------|--|
| Dimensions                      | [mm] 78 x 45 x 124.7   |
| Application                     |  |
| Application                     | pulse evaluation system with microprocessor for slip and synchronous monitoring; evaluation of pulse differences |
| Electrical data                 |  |
| Nominal voltage AC              | [V] 110...240  |
| Nominal voltage DC              | [V] 27   |
| Nominal voltage tolerance       | [%] < 10   |
| Nominal voltage tolerance 2     | [%] 20...10  |
| Nominal frequency AC            | [Hz] 50...60   |
| Power consumption               | [W] 3  |
| Auxiliary energy for sensors DC | [V] 19.6...27.7; (SELV, ≤ 150 mA)  |
| Inputs / outputs                |  |
| Number of inputs and outputs    | Number of relay outputs: 2   |
| Outputs                         |  |
| Number of relay outputs         | 2  |
| Contact rating                  | 6 A (250 V AC); B300, R300   |
| Measuring/setting range         |  |
| Setting range Hz                | [Hz] 0.1...1000  |
| Setting range                   | [Imp/min] 1...60000  |

# DS2505



## Evaluation unit for slip and synchronous monitoring

MONITOR/FS-2 /110-240VAC/DC

| Operating conditions          |                  |   |
|-------------------------------|------------------|---|
| Ambient temperature           | [°C]             | -40...60  |
| Storage temperature           | [°C]             | -40...85  |
| Max. relative air humidity    | [%]              | 80; (40 °C: 50 %)   |
| Protection                    |                  | IP 50   |
| Protection rating terminals   |                  | IP 20   |
| Tests / approvals             |                  |   |
| EMC                           | EN 61010         | 2011  |
|                               | EMV 89/336/EWG   |   |
|                               | EN 61000-6-2     | 2005  |
|                               | EN 61000-6-4     | 2007  |
| Mechanical data               |                  |   |
| Weight                        | [g]              | 377.5   |
| Dimensions                    | [mm]             | 78 x 45 x 124.7   |
| Materials                     |                  | plastics  |
| Displays / operating elements |                  |   |
| Display                       |                  | OLED display, 128 x 64 pixels luminous                              |
|                               | switching status | LED, green  |
| Remarks                       |                  |   |
| Remarks                       |                  | The unit complies with overvoltage category II; degree of soiling 2 |



## Evaluation unit for slip and synchronous monitoring

MONITOR/FS-2 /110-240VAC/DC

### Electrical connection

dual-chamber terminals: 2 x ...2.5 mm<sup>2</sup>; AWG 14

|    |                                |
|----|--------------------------------|
| 1  | DC supply voltage (L-)         |
| 2  | DC supply voltage (L+)         |
| 3  | supply transistor outputs (L+) |
| 4  | sensor signal 1 pnp            |
| 5  | DC Sensor supply (L+)          |
| 6  | DC Sensor supply (L-)          |
| 7  | AC supply voltage (L)          |
| 8  | AC supply voltage (N)          |
| 9  | not used                       |
| 10 | sensor signal 1 npn            |
| 11 | sensor signal 2 pnp            |
| 12 | sensor signal 2 npn            |
| 13 | relay 1 common                 |
| 14 | relay 1 normally open          |
| 15 | relay 1 normally closed        |
| 16 | transistor output 1 pnp        |
| 17 | release 1/2 pnp                |
| 18 | reset 1/2 pnp                  |
| 19 | relay 2 common                 |
| 20 | relay 2 normally open          |
| 21 | relay 2 normally closed        |
| 22 | not used                       |
| 23 | not used                       |
| 24 | transistor output 2 pnp        |