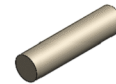
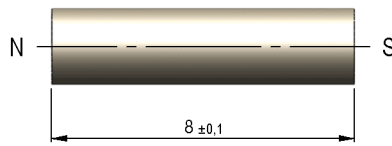
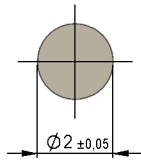


Dimensions mm[inch]
 tolerances acc. to DIN ISO 2768-m
 Toleranzen gem. DIN ISO 2768-m

Isometric
 Scale 2:1
 Maßstab 2:1



zinc plated
 verzinkt

Mag. values DIN IEC 60404-8-	Conditions	Min	Typ	Max	Unit
Remanence Br		1.170	1.240		mT
Revers. temp. coeff. of Br			-0,12		%/K
Coercivity HcB		876	923		kA/m
Coercivity HcJ		955			kA/m
Revers. temp. coeff. of HcJ			-0,6		%/K
Density		7,4	7,5		g/cu cm
Max. operating temperature				80	°C
Magnetic moment	inclusive of 5% tolerance	2,9	3,1		E-6 Vs*cm
Magnet Material		NdFeB			
Direction of Magnetization		axial			

General data	Conditions	Min	Typ	Max	Unit
Remarks		All details according to manufacturers information			