

Pin Headers

3.5mm, Straight, Double Row

multicomp PRO

**RoHS
Compliant**



Description

Multicomp Pro 350 Power Connector is a wire-to-board system that offers a 3.50mm pitch, a higher-current rating of 14.0A, and superior design options for flexibility and efficient assembly

Features

- Multiple mechanical keying
Allow same-circuit, multiple connector use with virtually no chance of cross mating
- Fully isolated terminals
Protect against potential damage of the header and receptacle terminals during handling and mating
- 5562 & 5563 Series low mating force terminal (Reduce the insertion force terminal)
Reduces operator fatigue and improves assembly compliance
- 17% reduction in pitch over similar power connectors
(Compared with similar power connectors, the spacing is effectively reduced)
Current-dense design saves PCB space
- Terminal interface with six independent points of contact (split-box terminal design)
Offers alternate current paths for long-term performance and reliability

Specifications

Current Rating	: 5-12A AC/DC
Voltage Rating	: 400V AC/DC
Contact Resistance	: 10mΩ Max.
Insulation Resistance	: 1000MΩ Min.
Withstanding Voltage	: 1800V AC/minute
Operating Temperature	: -40°C to +120°C

Material

Insulator	: LCP (UL94V-0)
Colour	: Black
Contact	: High Performance Alloy
Plating	: Matte Tin Plated

Applications

Consumer/Home Appliance

Washers, Refrigerators

Industrial

Assembly Line Equipment

Lighting

Ballasts, Home Lighting Fixtures

Medical

Medical Device

Telecommunications/Networking

Hubs, Servers

Transportation

Infotainment, Interior

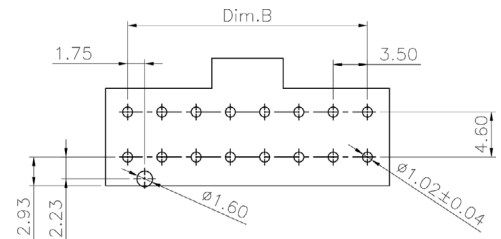
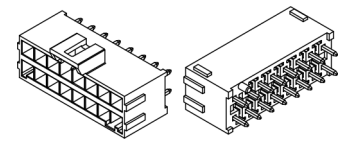
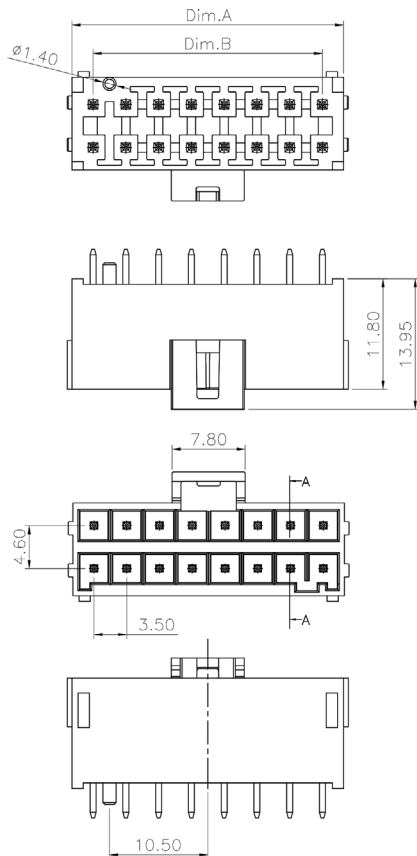
Aerospace and Defense

Pin Headers

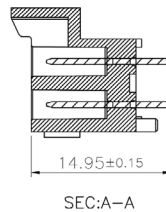
3.5mm, Straight, Double Row

multicomp PRO

Drawing



P.C.B. Layout



Circuits	Dimensions	
	A	B
4	8	3.5
6	11.5	7
8	15	10.5
10	18.5	14
12	22	17.5
14	25.5	21
16	29	24.5

Part Number Table

Dimensions : Millimetres

Description	Part Number
Pin Header, 3.5mm, WTB, Straight, Double Row, 4 Way	MP010122
Pin Header, 3.5mm, WTB, Straight, Double Row, 6 Way	MP010123
Pin Header, 3.5mm, WTB, Straight, Double Row, 8 Way	MP010124
Pin Header, 3.5mm, WTB, Straight, Double Row, 10 Way	MP010125
Pin Header, 3.5mm, WTB, Straight, Double Row, 12 Way	MP010126
Pin Header, 3.5mm, WTB, Straight, Double Row, 14 Way	MP010127
Pin Header, 3.5mm, WTB, Straight, Double Row, 16 Way	MP010128

Important Notice : This data sheet and its contents (the "Information") belong to the members of the AVNET group of companies (the "Group") or are licensed to it. No licence is granted for the use of it other than for information purposes in connection with the products to which it relates. No licence of any intellectual property rights is granted. The Information is subject to change without notice and replaces all data sheets previously supplied. The Information supplied is believed to be accurate but the Group assumes no responsibility for its accuracy or completeness, any error in or omission from it or for any use made of it. Users of this data sheet should check for themselves the Information and the suitability of the products for their purpose and not make any assumptions based on information included or omitted. Liability for loss or damage resulting from any reliance on the Information or use of it (including liability resulting from negligence or where the Group was aware of the possibility of such loss or damage arising) is excluded. This will not operate to limit or restrict the Group's liability for death or personal injury resulting from its negligence. Multicomp Pro is the registered trademark of Premier Farnell Limited 2019.

Newark.com/multicomp-pro
 Farnell.com/multicomp-pro
 sg.element14.com/b/multicomp-pro

multicomp PRO