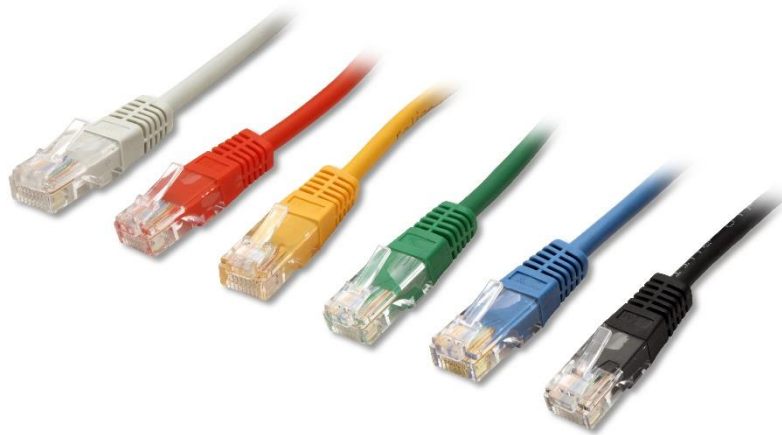


ROLINE Patchcord Cat.5e UTP



Description	<p>Patch cable for networking connections between devices. Prepared unshielded Twisted Pair cable with RJ-45 connectors on both ends</p> <p>Durable due to moulded kink protection. Flexible cable, suitable for narrow bending High quality plugs with gold plated contacts</p> <p>Contact settings 1:1, in accordance with the EIA/TIA 568 standard</p> <p>Construction: 4-pair stranded copper wire</p> <p>Standard: Cat5e / Class D</p> <p>Cover material PVC no LSOH</p> <p>Length indication on the sleeve</p> <p>2-year guarantee stand for performance promise</p>
Shield type	Unshielded Twisted Pair
Impedance	100 Ohm
Transfer quality	Cat5e /Class D
Cross selection	4P AWG26 CMX (UL) CMH E164469-F3
Standards	ISO/IEC 11801 & EN

Article No RJ45 patch cord Cat.5e unshielded, wiring 1:1

Length	grey	red	yellow	green	blue	black
0.5 m	21.15.0500	21.15.0521	21.15.0522	21.15.0523	21.15.0524	21.15.0525
1.0 m	21.15.0501	21.15.0531	21.15.0332	21.15.0533	21.15.0534	21.15.0535
2.0 m	21.15.0502	21.15.0541	21.15.0542	21.15.0543	21.15.0544	21.15.0545
3.0 m	21.15.0503	21.15.0551	21.15.0552	21.15.0553	21.15.0554	21.15.0555
5.0 m	21.15.0505	21.15.0561	21.15.0562	21.15.0563	21.15.0564	21.15.0565
7.0 m	21.15.0507	n/a	n/a	n/a	n/a	n/a
10 m	21.15.0510	21.15.0421	21.15.0422	21.15.0423	21.15.0424	21.15.0425
15 m	21.15.0515	21.15.0431	21.15.0432	21.15.0433	21.15.0434	21.15.0435
20 m	21.15.0519	21.15.0441	21.15.0442	21.15.0443	21.15.0444	21.15.0445

