

## Steckverteiler

Masse im Steckbereich  
DIN 46342, Teil 1

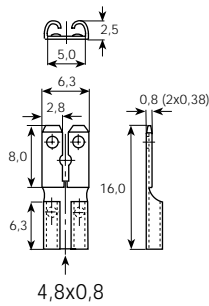
## Raccords mixtes

Dimensions zone d'emboîtement selon  
DIN 46342, partie 1

## Multi-connectors

Dimensions in the tab sector  
DIN 46342, part 1

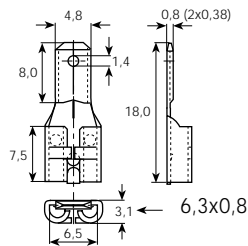
6,3 mm



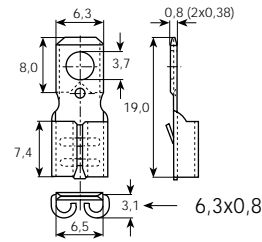
Artikel-Nr.  
Numéro d'article  
Part-No. → 3829C.67 MS sn

4.8x0.8 / 6.3x0.8  
1000

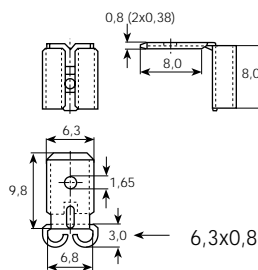
Stand.-Packg.



3829G.6( ) MS  
siehe Seite  
voir page  
see page | 318



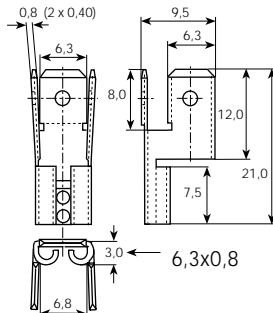
3839G.6( ) MS  
6.3x0.8 / 6.3x0.8  
500



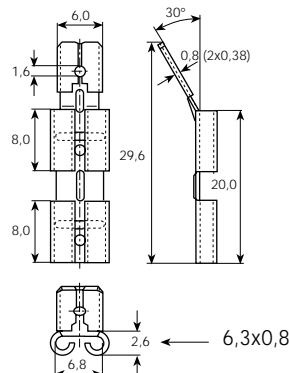
Artikel-Nr.  
Numéro d'article  
Part-No. → 3839F.6( ) MS

6.3x0.8 / 6.3x0.8  
500

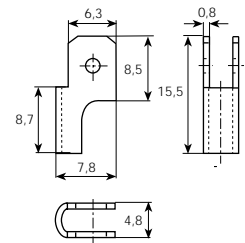
Stand.-Packg.



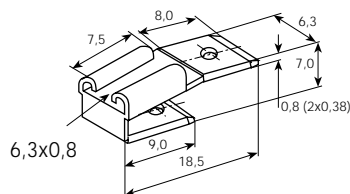
3838E.6( ) MS  
6.3x0.8 / 6.3x0.8  
500



3838D.6( ) MS  
6.3x0.8 / 6.3x0.8  
500



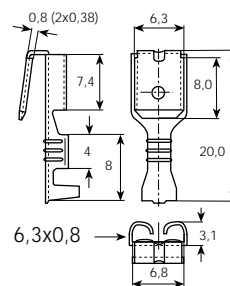
3839.80 RF bl  
6.3x0.8 / 6.3x0.8  
500



Artikel-Nr.  
Numéro d'article  
Part-No. → 3838.27 BZ sn  
3838.6( ) MS

6.3x0.8 / 6.3x0.8  
500

Stand.-Packg.



0.5 - 1.5 mm<sup>2</sup> 3838A.6( ) MS  
1.5 - 2.5 mm<sup>2</sup> 3838B.6( ) MS  
siehe Seite  
voir page  
see page | 360