

TERMSERIES SSS RELAIS 24V/24V 0,1ADC

Weidmüller Interface GmbH & Co. KG
Klingenbergstraße 16
D-32758 Detmold
Germany
Fon: +49 5231 14-0
Fax: +49 5231 14-292083
www.weidmueller.com



Similar to illustration

TERMSERIES accessories include:

- Spare relay
- Base
- Partition plates
- Cross-connections
- Power-feed modules

General ordering data

Type	SSS RELAIS 24V/24V 0,1ADC
Order No.	4061180000
Version	TERMSERIES, solid-state relays, 1 NO contact (Bipolar transistor), Rated control voltage: 18 V DC...24 V DC...30 V DC, Rated switching voltage: 3... 48 V DC, Continuous current: 100 mA, Plug-in connection
GTIN (EAN)	4032248415076
Qty.	20 pc(s).

Data sheet

TERMSERIES SSS RELAIS 24V/24V 0,1ADC

Weidmüller Interface GmbH & Co. KG
 Klingenbergstraße 16
 D-32758 Detmold
 Germany
 Fon: +49 5231 14-0
 Fax: +49 5231 14-292083
 www.weidmueller.com

Technical data

Dimensions and weights

Width	5 mm	Width (inches)	0.197 inch
Height	28 mm	Height (inches)	1.102 inch
Depth	15 mm	Depth (inches)	0.591 inch
Net weight	3.53 g		

Temperatures

Humidity	40 °C / 93 % rel. humidity, no condensation	Operating temperature, max.	60 °C
Operating temperature, min.	-20 °C	Storage temperature, max.	70 °C
Storage temperature, min.	-40 °C	Operating temperature	-20 °C...60 °C
Storage temperature	-40 °C...70 °C		

Probability of failure

MTTF	4,298 Years
------	-------------

Control side

Rated control voltage	18 V DC...24 V DC...30 V DC	Nominal control current	7 mA DC (±10 %)
Power rating	170 mW	Status indicator	No

Load side

Rated switching voltage	3... 48 V DC	Continuous current	100 mA
Rated switching current	100 mA/ DC	Switch-on delay	< 35 µs
Switch-off delay	< 355 µs	Voltage drop at max. load	≤ 1 V
Leakage current	< 10 µA	Min. switching current	500 µA
Short-circuit-proof	No	Protective circuit, load side	Free-wheeling diode

Contact data

Contact type	1 NO contact (Bipolar transistor)
--------------	-----------------------------------

General data

Colour	black
--------	-------

Insulation coordination

Clearance and creepage distances for control side - load side	≥ 5.5 mm	Dielectric strength for control side - load side	2.5 kV _{eff}
---	----------	--	-----------------------

Connection data

Wire connection method	Plug-in connection
------------------------	--------------------

Data sheet**TERMSERIES
SSS RELAIS 24V/24V 0,1ADC**

Weidmüller Interface GmbH & Co. KG
Klingenbergstraße 16
D-32758 Detmold
Germany
Fon: +49 5231 14-0
Fax: +49 5231 14-292083
www.weidmueller.com

Technical data**Classifications**

ETIM 3.0	EC001504	ETIM 4.0	EC001437
ETIM 5.0	EC001437	ETIM 6.0	EC001504
UNSPSC	30-21-18-01	eClass 5.1	27-27-09-90
eClass 6.2	27-37-16-01	eClass 7.1	27-37-16-01
eClass 8.1	27-37-16-01	eClass 9.0	27-37-16-04
eClass 9.1	27-37-16-04		

Approvals

Approvals

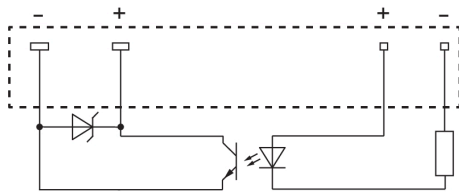


ROHS

Conform

Downloads

Brochure/Catalogue	CAT 4.2 ELECTR 18/19 EN
Engineering Data	WSCAD
Engineering Data	STEP

TERMSERIES
SSS RELAIS 24V/24V 0,1ADC**Weidmüller Interface GmbH & Co. KG**
Klingenbergstraße 16
D-32758 Detmold
Germany
Fon: +49 5231 14-0
Fax: +49 5231 14-292083
www.weidmueller.com**Drawings****Wiring diagram**

View of pins from below

Dimensional drawing