

Vis sans tête à six pans creux à bout plat DIN EN ISO 4026, sans frein-filet

Description de l'article/illustrations du produit



Description

Matière :

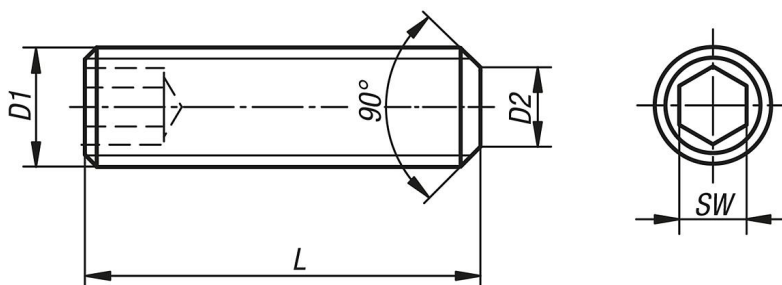
Acier ou Inox A2.

Finition :

Acier : classe de résistance 45 H, noir.

Inox : A2-70, poli.

Dessins



Aperçu des articles

Vis HC à bout plat DIN EN ISO 4026

Référence	Matière du corps de base	L	D1	D2	SW
K0707.03X5	acier	5	M3	2	1,5
K0707.03X6	acier	6	M3	2	1,5
K0707.03X8	acier	8	M3	2	1,5
K0707.03X10	acier	10	M3	2	1,5
K0707.03X12	acier	12	M3	2	1,5
K0707.03X16	acier	16	M3	2	1,5
K0707.03X20	acier	20	M3	2	1,5
K0707.04X5	acier	5	M4	2,5	2
K0707.04X6	acier	6	M4	2,5	2
K0707.04X8	acier	8	M4	2,5	2
K0707.04X10	acier	10	M4	2,5	2
K0707.04X12	acier	12	M4	2,5	2
K0707.04X16	acier	16	M4	2,5	2
K0707.04X20	acier	20	M4	2,5	2
K0707.04X25	acier	25	M4	2,5	2
K0707.05X5	acier	5	M5	3,5	2,5
K0707.05X6	acier	6	M5	3,5	2,5
K0707.05X8	acier	8	M5	3,5	2,5
K0707.05X10	acier	10	M5	3,5	2,5
K0707.05X12	acier	12	M5	3,5	2,5
K0707.05X16	acier	16	M5	3,5	2,5
K0707.05X20	acier	20	M5	3,5	2,5
K0707.05X25	acier	25	M5	3,5	2,5
K0707.05X30	acier	30	M5	3,5	2,5
K0707.06X6	acier	6	M6	4	3

Vis sans tête à six pans creux à bout plat DIN EN ISO 4026, sans frein-filet

Aperçu des articles

Référence	Matière du corps de base	L	D1	D2	SW
K0707.06X8	acier	8	M6	4	3
K0707.06X10	acier	10	M6	4	3
K0707.06X12	acier	12	M6	4	3
K0707.06X16	acier	16	M6	4	3
K0707.06X20	acier	20	M6	4	3
K0707.06X25	acier	25	M6	4	3
K0707.06X30	acier	30	M6	4	3
K0707.06X35	acier	35	M6	4	3
K0707.06X40	acier	40	M6	4	3
K0707.06X45	acier	45	M6	4	3
K0707.06X50	acier	50	M6	4	3
K0707.06X60	acier	60	M6	4	3
K0707.08X8	acier	8	M8	5,5	4
K0707.08X10	acier	10	M8	5,5	4
K0707.08X12	acier	12	M8	5,5	4
K0707.08X16	acier	16	M8	5,5	4
K0707.08X20	acier	20	M8	5,5	4
K0707.08X25	acier	25	M8	5,5	4
K0707.08X30	acier	30	M8	5,5	4
K0707.08X35	acier	35	M8	5,5	4
K0707.08X40	acier	40	M8	5,5	4
K0707.08X45	acier	45	M8	5,5	4
K0707.08X50	acier	50	M8	5,5	4
K0707.08X60	acier	60	M8	5,5	4
K0707.08X70	acier	70	M8	5,5	4
K0707.08X80	acier	80	M8	5,5	4
K0707.10X10	acier	10	M10	7	5
K0707.10X12	acier	12	M10	7	5
K0707.10X16	acier	16	M10	7	5
K0707.10X20	acier	20	M10	7	5
K0707.10X25	acier	25	M10	7	5
K0707.10X30	acier	30	M10	7	5
K0707.10X35	acier	35	M10	7	5
K0707.10X40	acier	40	M10	7	5
K0707.10X45	acier	45	M10	7	5
K0707.10X50	acier	50	M10	7	5
K0707.10X60	acier	60	M10	7	5
K0707.10X70	acier	70	M10	7	5
K0707.10X80	acier	80	M10	7	5
K0707.10X90	acier	90	M10	7	5
K0707.10X100	acier	100	M10	7	5
K0707.103X5	acier inoxydable	5	M3	2	1,5
K0707.103X6	acier inoxydable	6	M3	2	1,5
K0707.103X8	acier inoxydable	8	M3	2	1,5
K0707.103X10	acier inoxydable	10	M3	2	1,5
K0707.103X12	acier inoxydable	12	M3	2	1,5
K0707.104X5	acier inoxydable	5	M4	2,5	2
K0707.104X6	acier inoxydable	6	M4	2,5	2
K0707.104X8	acier inoxydable	8	M4	2,5	2
K0707.104X10	acier inoxydable	10	M4	2,5	2
K0707.104X12	acier inoxydable	12	M4	2,5	2
K0707.104X16	acier inoxydable	16	M4	2,5	2
K0707.104X20	acier inoxydable	20	M4	2,5	2
K0707.105X5	acier inoxydable	5	M5	3,5	2,5
K0707.105X6	acier inoxydable	6	M5	3,5	2,5
K0707.105X8	acier inoxydable	8	M5	3,5	2,5
K0707.105X10	acier inoxydable	10	M5	3,5	2,5
K0707.105X12	acier inoxydable	12	M5	3,5	2,5
K0707.105X16	acier inoxydable	16	M5	3,5	2,5
K0707.105X20	acier inoxydable	20	M5	3,5	2,5
K0707.105X25	acier inoxydable	25	M5	3,5	2,5

Vis sans tête à six pans creux à bout plat DIN EN ISO 4026, sans frein-filet

Aperçu des articles

Référence	Matière du corps de base	L	D1	D2	SW
K0707.105X30	acier inoxydable	30	M5	3,5	2,5
K0707.106X6	acier inoxydable	6	M6	4	3
K0707.106X8	acier inoxydable	8	M6	4	3
K0707.106X10	acier inoxydable	10	M6	4	3
K0707.106X12	acier inoxydable	12	M6	4	3
K0707.106X16	acier inoxydable	16	M6	4	3
K0707.106X20	acier inoxydable	20	M6	4	3
K0707.106X25	acier inoxydable	25	M6	4	3
K0707.106X30	acier inoxydable	30	M6	4	3
K0707.106X35	acier inoxydable	35	M6	4	3
K0707.106X40	acier inoxydable	40	M6	4	3
K0707.108X8	acier inoxydable	8	M8	5,5	4
K0707.108X10	acier inoxydable	10	M8	5,5	4
K0707.108X12	acier inoxydable	12	M8	5,5	4
K0707.108X16	acier inoxydable	16	M8	5,5	4
K0707.108X20	acier inoxydable	20	M8	5,5	4
K0707.108X25	acier inoxydable	25	M8	5,5	4
K0707.108X30	acier inoxydable	30	M8	5,5	4
K0707.108X35	acier inoxydable	35	M8	5,5	4
K0707.108X40	acier inoxydable	40	M8	5,5	4
K0707.108X45	acier inoxydable	45	M8	5,5	4
K0707.108X50	acier inoxydable	50	M8	5,5	4
K0707.110X10	acier inoxydable	10	M10	7	5
K0707.110X12	acier inoxydable	12	M10	7	5
K0707.110X16	acier inoxydable	16	M10	7	5
K0707.110X20	acier inoxydable	20	M10	7	5
K0707.110X25	acier inoxydable	25	M10	7	5
K0707.110X30	acier inoxydable	30	M10	7	5
K0707.110X35	acier inoxydable	35	M10	7	5
K0707.110X40	acier inoxydable	40	M10	7	5
K0707.110X45	acier inoxydable	45	M10	7	5
K0707.110X50	acier inoxydable	50	M10	7	5