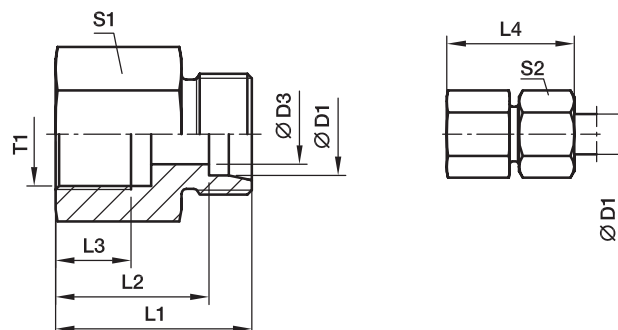


GAI-R Terminale diritto femmina

Fillettatura femmina BSPP (ISO 1179-1) / Estremità conica EO 24°



Serie	D1	T1	D3	L1	L2	L3	L4	S1	S2	Peso g/1 pezzo	Codice di ordinazione*	PN (bar) ¹⁾		
												CF	71	MS
L ³⁾	06	G 1/8	4	26,0	19,0	8,0	34	14	14	18	GAI06LR	315	315	200
	06	G 1/4	4	31,0	24,0	12,0	39	19	14	39	GAI06LR1/4	315	315	200
	08	G 1/4	6	31,0	24,0	12,0	39	19	17	39	GAI08LR	315	315	200
	08	G 3/8	6	32,0	25,0	12,0	40	24	17	61	GAI08LR3/8	315	315	200
	08	G 1/2	6	36,0	29,0	14,0	44	27	17	80	GAI08LR1/2	315	315	200
	10	G 1/4	8	32,0	25,0	12,0	40	19	19	40	GAI10LR	315	315	200
	10	G 3/8	8	33,0	26,0	12,0	41	24	19	63	GAI10LR3/8	315	315	200
	10	G 1/2	8	37,0	30,0	14,0	45	27	19	81	GAI10LR1/2	315	315	200
	12	G 3/8	10	33,0	26,0	12,0	41	24	22	64	GAI12LR	315	315	200
	12	G 1/2	10	37,0	30,0	14,0	45	27	22	83	GAI12LR1/2	315	315	200
	15	G 1/2	12	38,0	31,0	14,0	46	27	27	87	GAI15LR	315	315	200
	18	G 1/2	15	38,0	30,5	14,0	47	27	32	89	GAI18LR	315	315	200
	18	G 3/8	15	34,0	26,5	12,0	43	27	32	95	GAI18LR3/8	315	315	200
	22	G 3/4	19	43,0	35,5	16,0	52	36	36	173	GAI22LR	160	160	100
	28	G 1	24	45,5	38,0	18,0	55	41	41	211	GAI28LR	160	160	100
	35	G 1 1/4	30	51,5	41,0	20,0	63	55	50	469	GAI35LR	160	160	100
	42	G 1 1/2	36	53,5	42,5	22,0	65	60	60	540	GAI42LR	160	160	100
	S ⁴⁾	06	G 1/4	4	33,0	26,0	12,0	41	19	17	43	GAI06SR	400	400
08		G 1/4	5	33,0	26,0	12,0	41	19	19	47	GAI08SR	400	400	
10		G 3/8	7	34,0	26,5	12,0	43	24	22	68	GAI10SR	400	400	
12		G 3/8	8	34,0	26,5	12,0	43	24	24	71	GAI12SR	400	400	
12		G 1/2	8	38,0	30,5	14,0	47	30	24	121	GAI12SR1/2	400	400	
14		G 1/2	10	40,0	32,0	14,0	50	30	27	125	GAI14SR	400	400	
16		G 1/2	12	40,0	31,5	14,0	50	30	30	126	GAI16SR	400	400	
20		G 3/4	16	45,0	34,5	16,0	56	36	36	196	GAI20SR	315	315	
25		G 1	20	49,5	37,5	18,0	62	41	46	246	GAI25SR	315	315	
30		G 1 1/4	25	55,5	42,0	22,0	69	55	50	537	GAI30SR	315	315	
38		G 1 1/2	32	59,5	43,5	22,0	74	60	60	649	GAI38SR	250	250	

¹⁾ Pressione indicata = Articolo disponibile

³⁾ L = Serie leggera; ⁴⁾ S = Serie pesante

$$\frac{PN \text{ (bar)}}{10} = PN \text{ (MPa)}$$

Consegna senza dado né anello. Per informazioni sull'ordinazione di raccordi completi vedere pag. 17.

*Aggiungere i suffissi qui di seguito in base al materiale e alla superficie richiesti.

Suffissi codice di ordinazione		
Materiale	Suffisso superficie e materiale	Esempio
Acciaio, zincato, esente da CromoVI	CFX	GAI16SRCFX
Acciaio inossidabile	71X	GAI16SR71X
Ottone	MSX	GAI16SRMSX