

RES90F16

Rev. 0

**CHARACTERISTICS:**

Rated Voltage:	250VAC max
Rated Current at Ambient:	16A @ 40°C
Operating Frequency:	DC-60HZ
Climatic Class (IEC60068-1):	25/100/21
Temperature Range:	-25°C to +100°C
Over load Current:	1.5 x Rated Ct. for 1 Min
Operational Leakage current : ( at 230VAC and Total C +/-20%)	1.02 mA max
Worst case Leakage current : ( N interrupted and Total C +/-20%)	<3.46 mA max
DCR @ 25°C (+/-25%) :	15 mΩ
Test Voltage (100%) for 2 sec:-	P-P: 1100VDC
	P-GND: 3000VDC
Ingress Protection:	IP 20
Weight (approximate):	420 gr

**FILTER PARAMETERS:**

Total Inductance (P-P'+N-N') @10KHz:	8mH +50%,-30%
Total Capacitance (P-P/P-N) @1KHz:	3μF +/- 20%
Total Capacitance (P/N-GND) @1KHz:	22nF +/- 20%
Total Resistance (P-P/P-N):	220K Ω +/- 10%
Total Resistance (P/N-GND):	

**APPROVALS:**

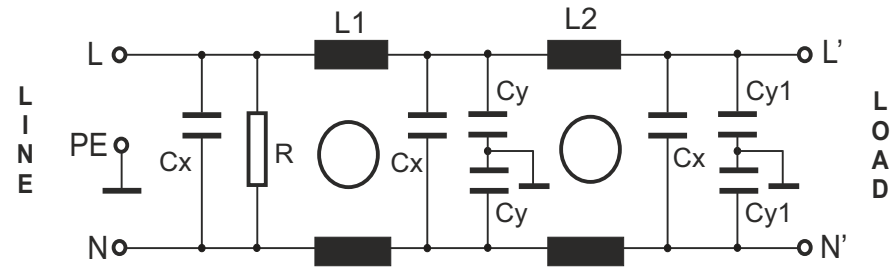
REACH  
ROHS  
UL



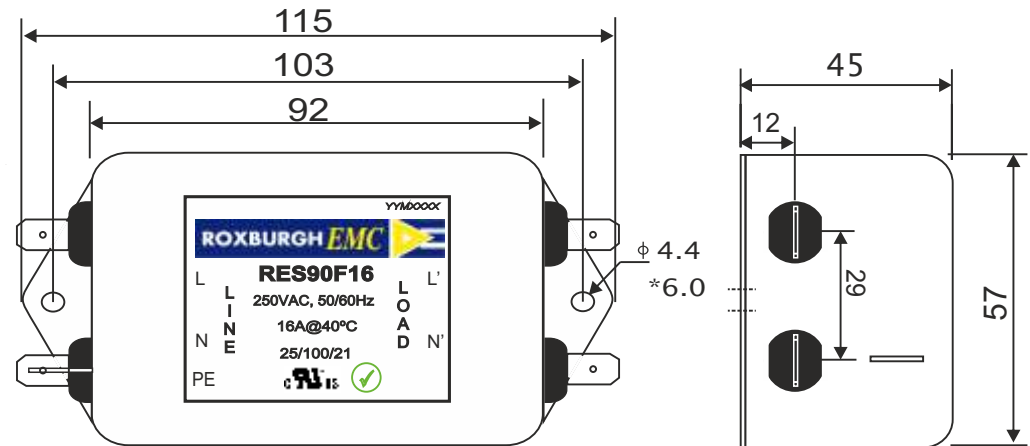
APPROVED  
BY  
AJAY

Date: 15-03-2014

**CIRCUIT DIAGRAM:**



**MECHANICAL DIMENSION (mm):**



**Note:**

Housing matl. Fe with Ni Plated  
Fast-On Terminal ( 6.38 x 0.8mm)  
Connections

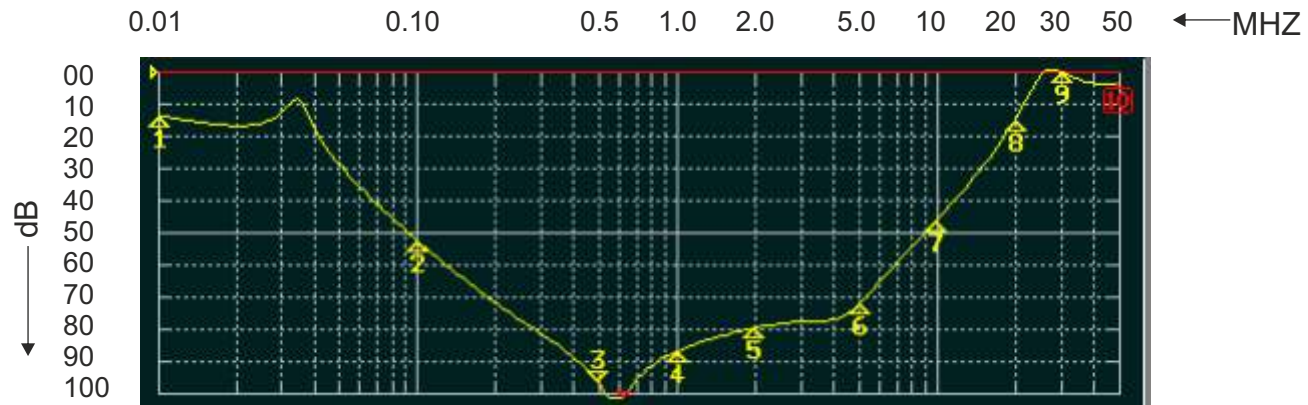
TOLERANCE: +/-1.0 mm



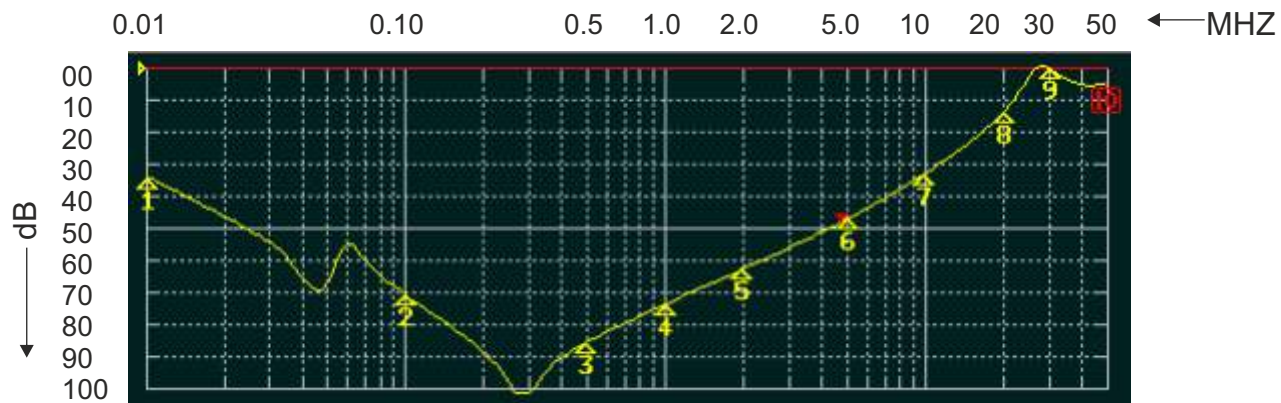
Tel:- +44(0) 1724 273200  
email:- [sales@dem-uk.com](mailto:sales@dem-uk.com)  
web :- [www.dem-uk.com/roxburgh](http://www.dem-uk.com/roxburgh)

**ROXBURGH EMC**  
FILTER INSERTION LOSS CHARACTERISTICS  
CISPR 17 - 50 OHM METHOD

**RES90F16**



COMMON MODE



DIFFERENTIAL MODE

