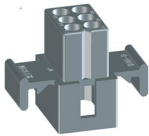


# Product Change Notification (PCN)

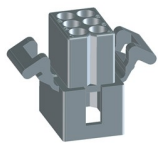
PCN Number	501823	Date Issued	November 09, 2016
Reason for Change	Obsolete		
Change Type Description	This is to inform you that the part(s) referenced in this notice will be made obsolete due to low demand. Please contact your Molex Sales Engineer for additional questions concerning possible replacement part(s).		
Planned Implementation Date	November 02, 2017		
Recommended Replacement Parts	Please see the attached replacement parts list .xls file.		
Last Time Buy Date for Obsolete Parts	September 04, 2017		
Last Time Ship Date for Obsolete Parts	October 02, 2017		

## Before Change

- Molex is making housing 1625-6P with standard ears obsolete and replacing it with part 469990804 with pre-bent ears.



Straight ear option is obsolete



Replaced by pre-bent ear option

1 Molex Confidential Information  
© 2016 Molex - All Rights Reserved. Unauthorized Reproduction/Distribution is Prohibited.



## After Change

### Overview

- Molex is building a new mold to make 1625-6P housing in Lincoln. The new mold will make the standard ear option obsolete replacing it with a pre-bent ear option. The no ear options will also be made using the new mold.
  - The pre-bent ear option is a drop in replacement
  - There will be no impact to fit, form, function or appearance for no ear options
- Part Number Impact
  - 1625-6P housings
  - Assembly parts affected are listed on the attached impact report
- Qualification reports and samples from the new mold will be available after February 1, 2017

2 Molex Confidential Information  
© 2016 Molex - All Rights Reserved. Unauthorized Reproduction/Distribution is Prohibited.





## Product Change Notification (PCN)

---

You may address any technical inquiries regarding this PCN by sending E-mail to [pcn\\_coordinator@molex.com](mailto:pcn_coordinator@molex.com) or your Local Sales Engineer.

Note: While responding, please retain "**PCN Notification:501823**" in the e-mail Subject line for faster response.

RELEASED

**Molex, LLC**  
2222 Wellington Court  
Lisle, IL 60532  
TEL: 630-969-4747  
[www.molex.com](http://www.molex.com)