

## Resisto GRP

Resisto GRP 1200 IP66 5200lm 840

0010315



### Product features

- Resisto GRP, integrated LED weatherproof luminaire, with smooth body finish optimized for LEDs with flat diffuser, easy to handle. Stainless steel diffuser clips and fixing brackets for surface mounting. The luminaire benefits from a water and dust resistant GRP body and PMMA diffuser. 5200lm; 37W; 140lm/W; 4000K; SDCM<4; non dimmable; CRI80; IP66; IK02; Class I; 72,000hrs (L80B20) lifespan; 1174mm x 90mm x 120mm; D-mark.



### PRODUCT OVERVIEW

Product name	Resisto GRP 1200 IP66 5200lm 840
Technology	LED
Mount	Ceiling surface mounting
General application	Logistics & Industry
ETIM Class	EC002892
E-number FI	4357080
Warranty	5 years
Fixture luminous flux (lm)	5200
Luminaire efficacy (lm/W)	140
Colour temperature (K)	4000
Light colour	Neutral White
CRI (Ra)	80
Colour Variation Initial (SDCM)	SDCM4
Beam Angle (°)	120
Photobiological Risk Group	RG1
Total power consumption (W)	37
Electrical protection	Class I
Dimmable	No
Dimming method	N/A
Housing colour	Grey
IP rating	IP66
IK rating	IK02
Product EAN number	5410288103150

### DATA TABLE

#### General data

Product name	Resisto GRP 1200 IP66 5200lm 840
Technology	LED
Mount	Ceiling surface mounting
General application	Logistics & Industry
Operating temperature range (°C)	-20°C...+45°C

## Resisto GRP

Resisto GRP 1200 IP66 5200lm 840

0010315

Performance ambient temperature Tq (°C)	25
ETIM Class	EC002892
E-number FI	4357080
Warranty	5 years

### Optical data

Fixture luminous flux (lm)	5200
Luminaire efficacy (lm/W)	140
Colour temperature (K)	4000
Light colour	Neutral White
CRI (Ra)	80
Colour Variation Initial (SDCM)	SDCM4
Beam Angle (°)	120
Photobiological Risk Group	RG1

### Electrical data

Total power consumption (W)	37
Mains voltage (V)	220-240V
Lamp power factor	1
Electrical protection	Class I
No. Of switching cycles before premature failures	>150000
Dimmable	No
Dimming method	N/A
Drive current (mA)	350
Inrush Current (A)	21.7
Inrush Duration (µs)	220
Glow Wire Test (°C)	650
Energy Efficiency Class (A->G) of contained light source	C
Nominal Frequency (Hz)	50/60Hz
Max. Luminaires per 10A C Breaker	33
Max. Luminaires per 13A C Breaker	45
Max. Luminaires per 16A C Breaker	54
Max. Luminaires per 20A C Breaker	70
Max. Luminaires per 10A B Breaker	22
Max. Luminaires per 13A B Breaker	27
Max. Luminaires per 16A B Breaker	34
Max. Luminaires per 20A B Breaker	42

### Lifetime data

Lifespan L70 B50	72000
Lifespan L80 B20	72000
Lifespan L90 B10	30000

### Physical data

Housing colour	Grey
IP rating	IP66
IK rating	IK02

## Resisto GRP

Resisto GRP 1200 IP66 5200lm 840

0010315

Nominal Product Length (mm)	1174
Nominal Product Width (mm)	90
Nominal Product Height (mm)	120
Weight (kg)	2.142

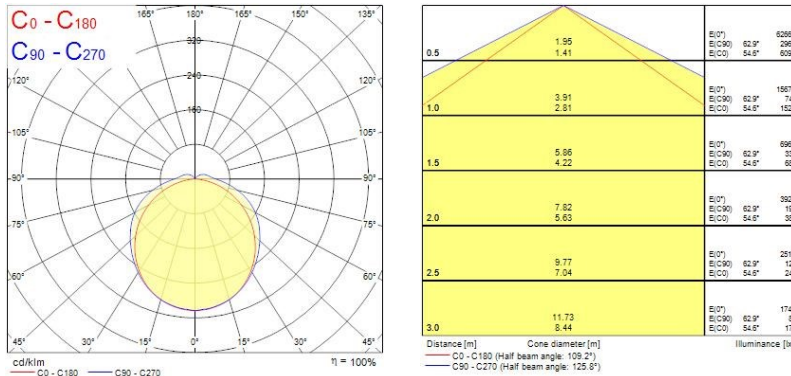
### Packaging

Single packaging type	Carton
Product EAN number	5410288103150
Packaging single length / height (cm)	152.8
Packaging single width (cm)	10.7
Packaging single depth (cm)	8.5
DUN14 (outer)	05410288103150
Units per outer package	1
Packaging outer length / height (cm)	126.8
Packaging outer width (cm)	33.5
Packaging outer depth (cm)	20.1

### Safety data

Optimal operating condition (°C)	-20-45
----------------------------------	--------

## PHOTOMETRY



## TECHNICAL DRAWINGS

