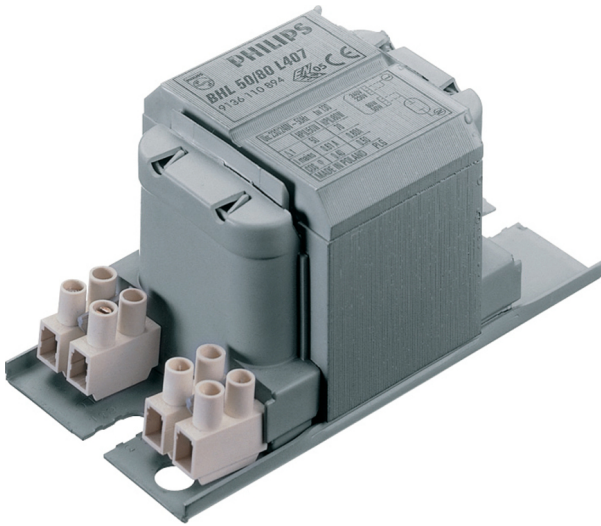


# Gear for SDW-T lamps

BSL 50 L307-LT 230/240V 50Hz BC1-118

CSLS electronic control unit with impregnated (HID 'BASIC' ) or encapsulated (HID 'Heavy Duty' ) electromagnetic ballasts



## Product data

### • General Characteristics

Rated Number of Lamps	1 piece
Rated Ballast-Lamp Power	50
Rated Lamptype	SDW
Application code	L307-LT
Line Voltage	230/240 V
Line Frequency	50 Hz
Design	BC1-118

### • Operating Characteristics

Input current with PF-correct.	0.35 A
Input current w/o PF-correct.	0.76 A
Mains voltage safety (AC)	-10%/+10%
Mains voltage performance (AC)	-8%/+6%
PowerFactor 100% output power	0.87 -
PowerFactor w/o PF compens.	0.40 -
Power losses gear	9.4 W

### • Wiring Characteristics

Connector type	Screw
Striplength	7.0 mm
Wcs Ballast contacts	0.70-6.00 mm <sup>2</sup>

### • Temperature Characteristics

T-storage	-30 (min), 130 (max) C
-----------	------------------------

T-winding maximum (tw)	130 (max) C
Delta-T normal conditions	55 C

### • Approval & Application Chars

CE marking	Yes
ENEC certificate	Yes

### • Product Dimensions

Length A1	118.0 mm
Fixing Hole Distance	94.0 mm
Length A2	
Width B1	61.0 mm
Height C1	52.0 mm
Fixing Hole Diameter D1	6.2 mm

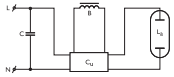
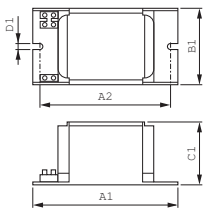
### • Product Data

Order code	913657517426
Full product code	913657517426
Full product name	BSL 50 L307-LT 230/240V 50Hz BC1-118
Order product name	BSL 50 L307-LT 230/240V 50Hz BC1-118
Pieces per pack	1
Packing configuration	6
Packs per outerbox	6
Bar code on pack - EAN1	8711500920355
Bar code on outerbox - EAN3	8711500061294
Logistic code(s) - 12NC	913657517426

## Gear for SDW-T lamps

Net weight per piece 1.050 kg

### Dimensional drawing



Product	A1 (Norm)	A2 (Norm)	B1 (Norm)	C1 (Norm)	D1 (Norm)
BSL 50 L307-LT 230/240V 50Hz	118.0	94.0	61.0	52.0	6.2
BC1-118					



© 2011 Koninklijke Philips Electronics N.V.  
All rights reserved.

Specifications are subject to change without notice. Trademarks are the property of Koninklijke Philips Electronics N.V. or their respective owners.

[www.philips.com/lighting](http://www.philips.com/lighting)

2011, June 7  
data subject to change