

# GN 191-NI | T-shaped connecting clamps

Stainless steel



- 1
- 2
- 3
- 4
- 5
- 6
- 7
- 8
- 9
- 10
- 11
- 12
- 13
- 14
- 15
- 16
- 17
- 18**
- 

## MATERIAL

Cast AISI CF-8 stainless steel, sandblasted matte finish.  
AISI 304 stainless steel screws and nuts.

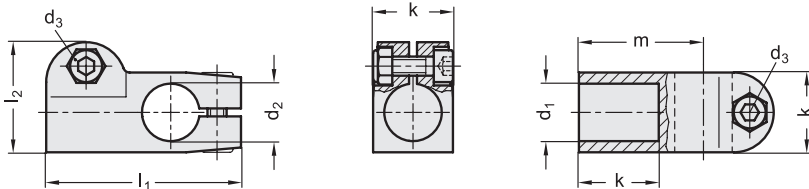
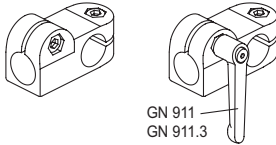
## FEATURES AND APPLICATIONS

The assembly holes of GN 191-NI connecting clamps allow an excellent match with tubes GN 990 (see page 1368).

The clamping screw d3 may be replaced by clamping kit GN 911 – GN 911.3 (see page 1372).

## SPECIAL EXECUTIONS ON REQUEST

Different combinations of holes d1/d2.



Code	Description	d1	d2	d3	k	l1	l2	m	d3 Clamping kit	
GN.52033	GN 191-B12-B12-2-NI	12	12	M6	25	61	34.5	39	GN 911-M6-22	240
GN.52053	GN 191-B14-B14-2-NI	14	14	M6	25	61	34.5	39	GN 911-M6-22	220
GN.52073	GN 191-B15-B15-2-NI	15	15	M6	25	61	34.5	39	GN 911-M6-22	210
GN.52093	GN 191-B16-B16-2-NI	16	16	M6	25	61	34.5	39	GN 911-M6-22	200
GN.52113	GN 191-B18-B18-2-NI	18	18	M6	25	61	34.5	39	GN 911-M6-22	175
GN.52123	GN 191-B20-B20-2-NI	20	20	M6	25	61	34.5	39	GN 911-M6-22	160

Connecting clamps