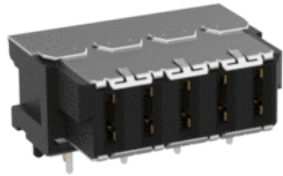


Part-No. 394571-E



# MicroSpeed Female Power Modules

5-pin, right angle, THR



## Technical Data

Applications	PCB Connectors, High Power,
Pitch	2 mm
Orientation	Right angle
Gender	Female
No. of Pins	5
Termination	THR
Blindmate	No
Current Rating	18 A
Max Operating Temperature	125 °C
Air- and creepage distance	0.5 mm

Mating Cycles	500
Packaging	Tape and reel 500 pcs

Part-No. 394571-E

## **MicroSpeed Female Power Modules**

**5-pin, right angle, THR**