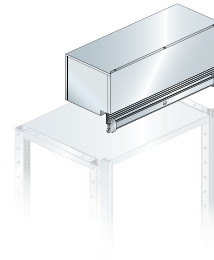


Roller shutter

Execution:

- Roller shutter including top shelf: pre-assembled roller shutter housing. Roller shutters are guided in vertical profiles, pre-assembled on support frame. With recess for cylinder cam lock. For initial assembly, including upper top shelf, pre-drilled, for screwing onto the roller shutter housing. Version: Roller shutter housings and guide profiles made of sheet steel. Colour: according to colour chart. Roller shutters made of plastic slats. Colour: Light grey, RAL 7035. Caution: The structure increases the rack height by 323 mm.



Art. no.	50308 577
Brand	LISTA
Manufacturer Part Number	73.238.020
Colour	Light grey RAL 7035
Width	890 mm
Depth	1060 mm
Gross Weight	68.000 kg
Product Group	5AN