

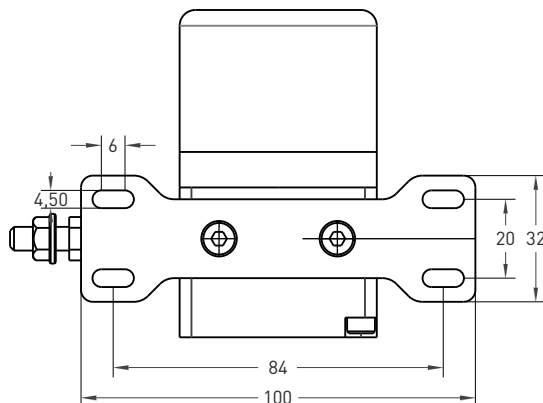
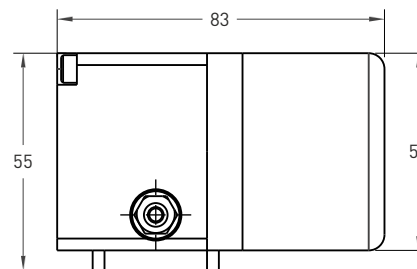
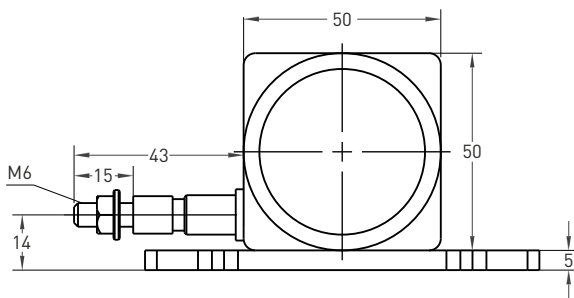
## Metal Case Draw Wire Encoder



- Measuring strokes 100 ... 1200 mm
- Incremental 50 µm / 25 µm resolution
- Push-Pull, TTL Linedriver or HTL Linedriver
- Easy mounting
- High protection degree

Technical Specifications	
Type of measurement	Optical
Resolution	0,1 mm/ppr 0,2 mm/ppr.
Measurement stroke	100 ... 1200 mm
Output signal	A,B,Z or $\bar{A},\bar{A}, \bar{B},\bar{B}, \bar{Z},\bar{Z}$
Output signal type	Push-Pull, TTL Linedriver or HTL Linedriver
Supply voltage	8 - 24 VDC, 5 VDC or 5 - 30 VDC
Power consumption (without load)	< 40 mA (24 VDC)
Electrical connections	2.5 m cable (standard)
Max. speed	0,5 m/s
Case material	Aluminium
Weight	< 500 gr.
IP degree	IP 54
Operating temperature	-20°C ... +80°C
Storage temperature	-30°C ... +90°C

### Mechanical Specifications



#### Push-Pull Cable Output

+V : Brown  
0V : White  
GND : Shield  
Ch A : Yellow  
Ch B : Green  
Ch Z : Gray

#### TTL - HTL Linedriver Cable Output

+V : Brown  
0V : White  
GND : Shield  
Ch A : Yellow  
Ch B : Green  
Ch Z : Gray  
Ch A inv. : Blue  
Ch B inv. : Red  
Ch Z inv. : Pink

Model	Case type	Measurement stroke	Output	Resolution	Output signal	Connector / Cable	Cable output
DWEM	1	100	LTP	P1000	Z	2M5	R
DWEM	1	100 mm 300 mm 500 mm 700 mm 1200 mm	LTP: Push-Pull TTL: TTL Linedriver HTL: High Linedriver	P1000: 0,2 mm/puls P2000: 0,1 mm/puls	Z: A,B,Z B: A,B	2M5: 2,5 meter cable 5M : 5 meter cable 8M : 8 meter cable 10M: 10 meter cable	R: Radial