

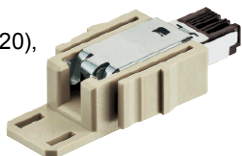
Identification

Part number

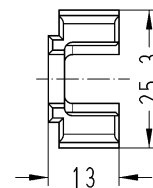
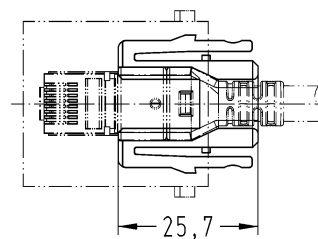
Drawing

Dimensions in mm

Han-Modular®,  
Han® RJ Industrial adapter  
RJ Industrial RJ45 Gigalink connector set,  
AWG 28/7 ... 24/7,  
10 Mbit/s, 100 Mbit/s,  
1000 Mbit/s, 10000 Mbit/s,  
piercing contacts  
(use tool: 09 45 800 0520),  
Cat. 6<sub>A</sub>

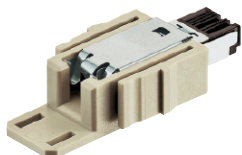


09 45 400 1520

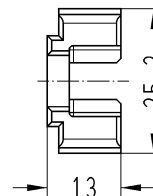
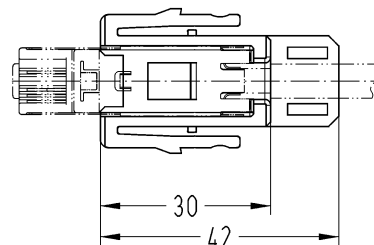


Wire outside diameter ≤ 1.05 mm

Han-Modular®,  
Han® RJ Industrial adapter  
RJ Industrial RJ45 connector set,  
AWG 24 ... 22,  
10 Mbit/s, 100 Mbit/s,  
IDC contacts,  
Cat. 5

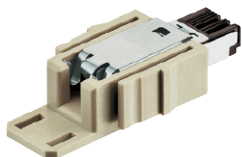


09 45 400 1100

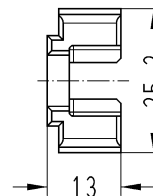
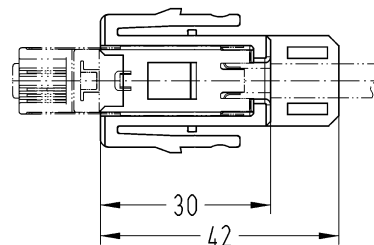


Wire outside diameter ≤ 1.6 mm

Han-Modular®,  
Han® RJ Industrial adapter  
RJ Industrial RJ45 connector set,  
AWG 26,  
10 Mbit/s, 100 Mbit/s,  
IDC contacts,  
Cat. 5

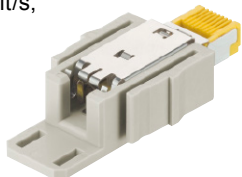


09 45 400 1109

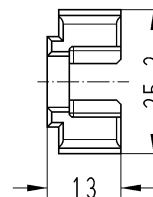
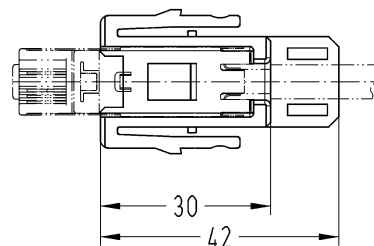


Wire outside diameter ≤ 1.6 mm

Han-Modular®,  
Han® RJ Industrial adapter  
RJ Industrial RJ45 connector set,  
AWG 27 ... 22,  
10 Mbit/s, 100 Mbit/s,  
1000 Mbit/s, 10000 Mbit/s,  
IDC contacts,  
Cat. 6



09 45 400 1560



Wire outside diameter ≤ 1.5 mm