

## Uninsulated crimp connectors

Order code	Manufacturer code	Description
33-0300	D10-6	PK 10 10MM M6 COPPER TUBE LUG
33-0305	D10-8	PK 10 10MM M8 COPPER TUBE LUG
33-0310	D16-6	PK 10 16MM M6 COPPER TUBE LUG
33-0315	D16-8	PK 10 16MM M8 COPPER TUBE LUG
33-0320	D25-6	PK 10 25MM M6 COPPER TUBE LUG
33-0325	D25-8	PK 10 25MM M8 COPPER TUBE LUG
33-0330	DB10	PK 10 4.5MM HD BUTT CONNECTOR
33-0335	DB16	PK 10 5.4MM HD BUTT CONNECTOR
33-0340	DB25	PK 10 6.8MM HD BUTT CONNECTOR

Uninsulated crimp connectors	Page 1 of 3
The enclosed information is believed to be correct, Information may change 'without notice' due to product improvement. Users should ensure that the product is suitable for their use. E. & O. E.	Revision A 04/07/2003

## Heavy Duty Crimp Connectors

### **Davico**

The range of Davico Heavy Duty Tube and Sheet Terminals have been specifically designed to meet the directives of most International Standards. This incorporates the majority of End User demands including the Electrical Authorities, Contractors, Control and Switchboard Panel Builders, Electrical Wholesaling outlets and the Automotive Trades.

For example the design construction of the terminals met the requirements for:-

Copper Specification to 99.9% I.A.C.S.	BS 6017 1981 (1989) or BS 1977 (1976)	Harmonized to ISO 431
Copper Finish Electro Tinned to	BS 1872 1984 (1990)	Harmonized to ISO 2093

The compliance with electrical specifications are in accordance with the general requirements for the initial final resistance, tensile 'Pull-Off' Tests, and if necessary cycling periods.

The Davico range of Heavy Duty Terminals meets the directives of these subjects, and typical referred standards are as follows:-

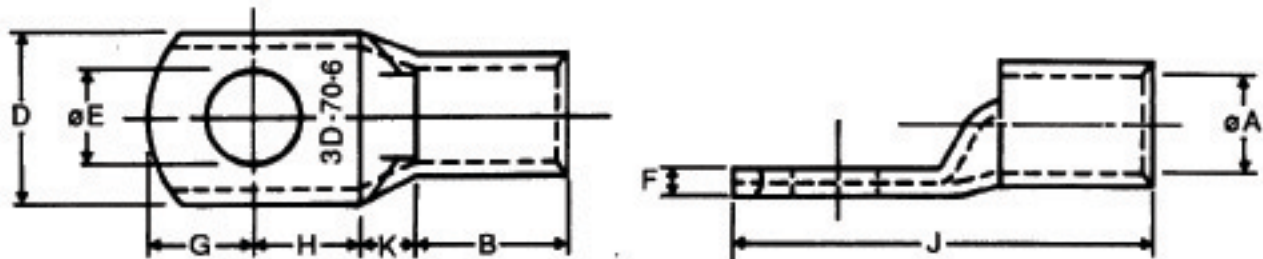
Description	BS Specification	International or Harmonized
Compression Joints for Copper Connections	BS 4579 Part 1 1970 (1988)	-
Codes of Practice for the Installation of Compressed Connectors for Power cables	BS 7609 1992	-
Compression Type Terminal Connectors for Power Cables	-	IEC 1238-1
MOD Specifications for Crimped Electrical Connections	-	DEF STAN 59-71
Wire Connectors for use with Copper Tube Conductors	-	UL 468A

**Copper Tube Terminals 10 – 25 mm<sup>2</sup>**

Finish: Electro tinned to BS 7609 (1992)

Copper Conductivity: to 99.9% I.A.C.S

Copper: to BS 6017 (1981) and BS 1977 (1976)



All Copper Tube Terminals have a radiused entry

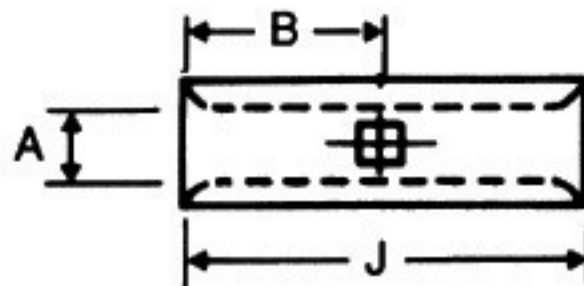
Davico Code	Cable Size mm <sup>2</sup>	Stud Size Ø mm	Dimensions								
			Ø A	B	D	Ø E	F	G	H	J	K
D 10-6	10	6	4.5	9	12	6.5	1.2	6	7	25	3
D 10-8	10	8	4.5	9	12	8.4	1.2	6	9	27	3
D 16-6	16	6	5.4	12	12	6.5	1.4	7	7	30	4
D 16-8	16	8	5.4	12	12	8.4	1.4	7	9	32	4
D 25-6	25	6	6.8	12	13	6.5	2	7	7	30	4
D 25-8	25	8	6.8	12	16	8.4	1.6	10	11	37	4

**Copper Butt Connectors 10 – 25 mm<sup>2</sup>**

Finish: Electro tinned to BS 7609 (1992)

Copper Conductivity: to 99.9% I.A.C.S

Copper: to BS 6017 (1981) and BS 1977 (1976)



Davico Code	Cable Size mm <sup>2</sup>	Dimensions		
		A	B	J
DB 10	10	4.5	10	20
DB 16	16	5.4	10	20
DB 25	25	6.8	16	32