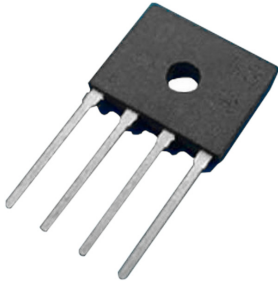


Glass Passivated Bridge Rectifier

multicomp PRO



Features

- Glass passivated chip junction
- High case dielectric strength
- High surge current capability, ideal for printed circuit board

Mechanical Data

| | |
|-------------------|---|
| Terminal | : Plated leads solderable per MIL-STD 202E, Method 208C |
| Case | : UL-94 Class V-0 recognized Flame Retardant Epoxy |
| Polarity | : Polarity symbol marked on body |
| Mounting position | : Any |
| Reverse Voltage | : 600 Volts |
| Forward Current | : 4 Amperes |

Maximum Ratings And Electrical Characteristics

Rating at 25°C ambient temperature unless otherwise specified.

Single phase, half wave, 60Hz, resistive or inductive load.

For capacitive load, derate current by 20%

| Characteristic | Symbol | Values | Unit | |
|---|-----------------------------|-----------------|----------------------|---------------------------|
| Maximum Recurrent Peak Reverse Voltage | V_{RRM} | 600 | V | |
| Maximum RMS Voltage | V_{RMS} | 420 | | |
| Maximum DC Blocking Voltage | V_{DC} | 600 | | |
| Maximum Average Forward Rectified Output Current @ $T_c = 138^\circ\text{C}$ (with heatsink) | $I_{(AV)}$ | 4 | A | |
| Peak Forward Surge Current 8.3ms Single Half Sine-Wave Super Imposed on Rated Load (JEDEC Method) | I_{FSM} | 135 | | |
| Maximum Forward Voltage at 4A DC | V_F | 0.92 | V | |
| I^2t Rating for Fusing ($t < 8.3\text{ms}$) | I^2t | 76 | A^2s | |
| Typical Thermal Resistance | without heatsink | $R_{\theta JA}$ | 55 | $^\circ\text{C}/\text{W}$ |
| | with heatsink | $R_{\theta JC}$ | 127 | |
| | without heatsink | $R_{\theta JL}$ | 15 | |
| Maximum DC Reverse Current at Rated DC Blocking Voltage | @ $T_A = 25^\circ\text{C}$ | I_R | 10 | μA |
| | @ $T_A = 125^\circ\text{C}$ | | 500 | |
| Operating Temperature Range | T_J | -55 to +150 | $^\circ\text{C}$ | |
| Storage Temperature Range | T_{STG} | | | |

Newark.com/multicomp-pro
Farnell.com/multicomp-pro
Element14.com/multicomp-pro

multicomp PRO

Glass Passivated Bridge Rectifier

Rating and Characteristic Curves

FIG.1-DERATING CURVE OUTPUT RECTIFIED CURRENT

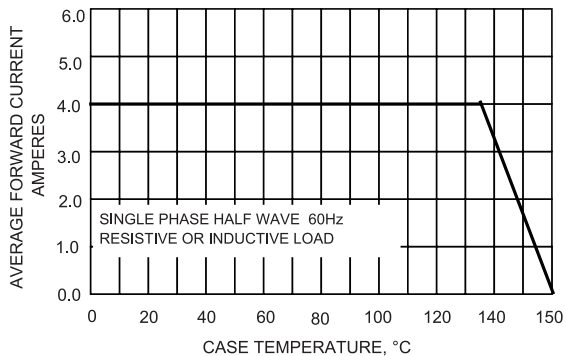


FIG.2-MAXIMUM NON-REPETITIVE SURGE CURRENT

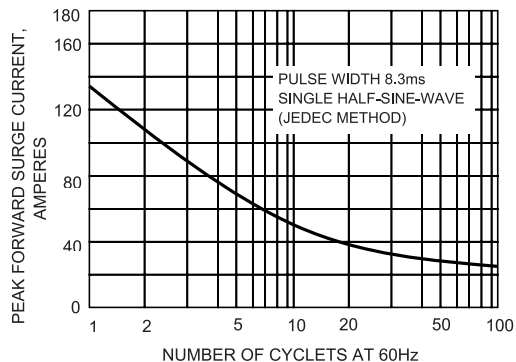


FIG.3-TYPICAL JUNCTION CAPACITANCE

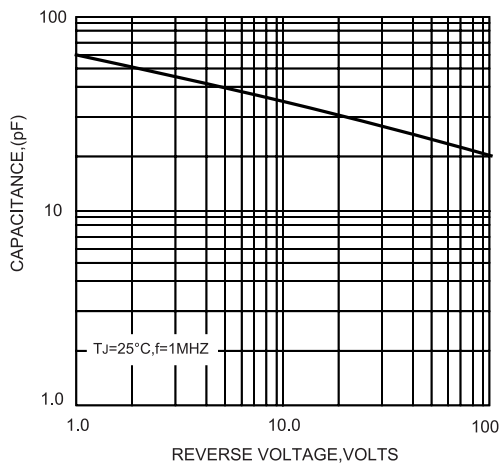


FIG.4-TYPICAL FORWARD CHARACTERISTICS

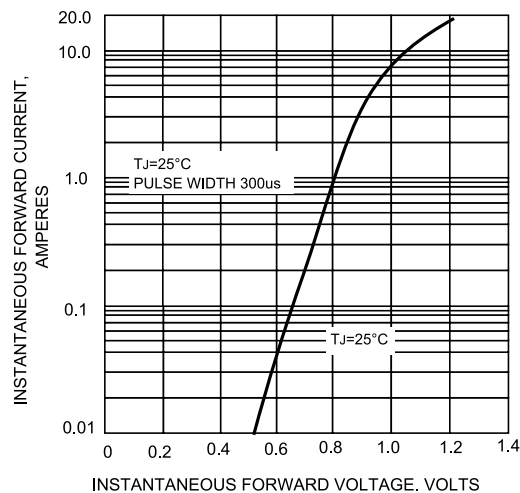
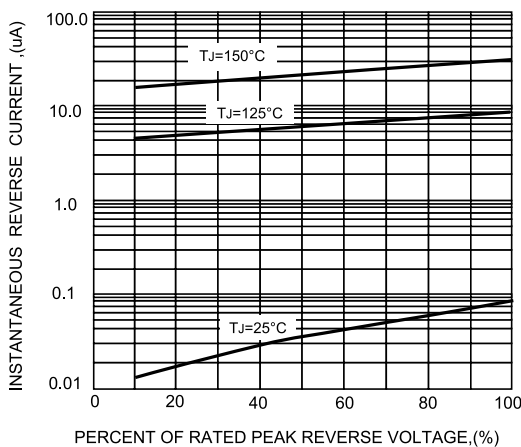


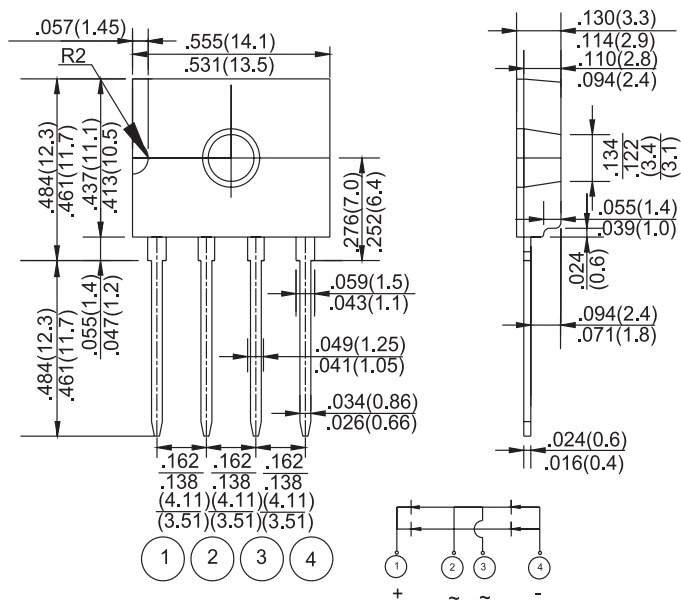
FIG.5-TYPICAL REVERSE CHARACTERISTICS



Glass Passivated Bridge Rectifier

Dimension:

D3K



Dimensions : Inches (Millimetres)

Part Number Table

| Description | Part Number |
|-----------------------------------|-------------|
| Glass Passivated Bridge Rectifier | D4KB6L |

Important Notice : This data sheet and its contents (the "Information") belong to the members of the AVNET group of companies (the "Group") or are licensed to it. No licence is granted for the use of it other than for information purposes in connection with the products to which it relates. No licence of any intellectual property rights is granted. The Information is subject to change without notice and replaces all data sheets previously supplied. The Information supplied is believed to be accurate but the Group assumes no responsibility for its accuracy or completeness, any error in or omission from it or for any use made of it. Users of this data sheet should check for themselves the Information and the suitability of the products for their purpose and not make any assumptions based on information included or omitted. Liability for loss or damage resulting from any reliance on the Information or use of it (including liability resulting from negligence or where the Group was aware of the possibility of such loss or damage arising) is excluded. This will not operate to limit or restrict the Group's liability for death or personal injury resulting from its negligence. Multicomp Pro is the registered trademark of Premier Farnell Limited 2019.

Newark.com/multicomp-pro
 Farnell.com/multicomp-pro
 Element14.com/multicomp-pro