

GN 6311.4 | Levelling elements

Steel base and stem



BASE
Zinc-plated steel.



STEM
Zinc-plated steel, class 5.8 (tensile strength 500 N/mm²), hexagon socket head and hardened rounded end.



ELASTIC RING
Steel for springs.



STANDARD EXECUTIONS

- **GN 6311.4-OS**: base without coating.
- **GN 6311.4-KR**: base with thermoplastic elastomer (TPE) no-slip coating.
- **GN 6311.4-KS**: base with acetal based (POM) technopolymer coating, white colour.



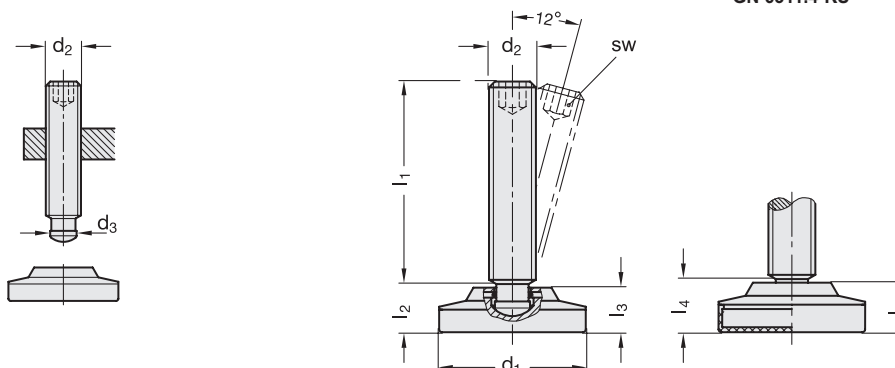
FEATURES

The resistance of the levelling element to a static load is only limited by the load capacity of the stem (steel class 5.8).
The static load values in the table below refer to the resistance to a load applied on the axis of the levelling element.
Under common working conditions, side or angular loading increases the stress on the levelling element and reduces its load capacity.



GN 6311.4-OS

GN 6311.4-KR
GN 6311.4-KS




GN 6311.4-OS


Code	Description	d1	d2	d3	l1	l2	l3	sw	Static load [kN]	⚖️
GN.12090	GN 6311.4-50-M10-37-OS	50	M10	8	37	12.5	11.5	5	13	140
GN.12093	GN 6311.4-50-M10-47-OS	50	M10	8	47	12.5	11.5	5	13	150
GN.12096	GN 6311.4-50-M10-57-OS	50	M10	8	57	12.5	11.5	5	13	178
GN.12099	GN 6311.4-50-M10-72-OS	50	M10	8	72	12.5	11.5	5	13	182
GN.11997	GN 6311.4-50-M12-41-OS	50	M12	8	41	12.5	11.5	6	13	150
GN.12000	GN 6311.4-50-M12-51-OS	50	M12	8	51	12.5	11.5	6	13	180
GN.12003	GN 6311.4-50-M12-61-OS	50	M12	8	61	12.5	11.5	6	13	179
GN.12006	GN 6311.4-50-M12-71-OS	50	M12	8	71	12.5	11.5	6	13	150
GN.12009	GN 6311.4-50-M12-91-OS	50	M12	8	91	12.5	11.5	6	13	200
GN.12015	GN 6311.4-50-M16-59-OS	50	M16	12	59	14.5	13.5	8	30	220
GN.12018	GN 6311.4-50-M16-69-OS	50	M16	12	69	14.5	13.5	8	30	240
GN.12021	GN 6311.4-50-M16-89-OS	50	M16	12	89	14.5	13.5	8	30	260
GN.12012	GN 6311.4-50-M16-114-OS	50	M16	12	114	14.5	13.5	8	30	289
GN.12027	GN 6311.4-60-M16-59-OS	60	M16	12	59	14.5	13.5	8	30	300
GN.12030	GN 6311.4-60-M16-69-OS	60	M16	12	69	14.5	13.5	8	30	320
GN.12033	GN 6311.4-60-M16-89-OS	60	M16	12	89	14.5	13.5	8	30	330
GN.12024	GN 6311.4-60-M16-114-OS	60	M16	12	114	14.5	13.5	8	30	380
GN.12042	GN 6311.4-60-M20-78-OS	60	M20	15.5	78	16.5	15.5	10	50	400
GN.12045	GN 6311.4-60-M20-88-OS	60	M20	15.5	88	16.5	15.5	10	50	400
GN.12036	GN 6311.4-60-M20-113-OS	60	M20	15.5	113	16.5	15.5	10	50	480
GN.12039	GN 6311.4-60-M20-138-OS	60	M20	15.5	138	16.5	15.5	10	50	520

Levelling elements and supports

GN 6311.4-KR

Code	Description	d1	d2	d3	l1	l4	l5	sw	Static load [KN]	
GN.12088	GN 6311.4-50-M10-37-KR	50	M10	8	37	14	13	5	13	130
GN.12091	GN 6311.4-50-M10-47-KR	50	M10	8	47	14	13	5	13	141
GN.12094	GN 6311.4-50-M10-57-KR	50	M10	8	57	14	13	5	13	178
GN.12097	GN 6311.4-50-M10-72-KR	50	M10	8	72	14	13	5	13	152
GN.11995	GN 6311.4-50-M12-41-KR	50	M12	8	41	14	13	6	13	140
GN.11998	GN 6311.4-50-M12-51-KR	50	M12	8	51	14	13	6	13	150
GN.12001	GN 6311.4-50-M12-61-KR	50	M12	8	61	14	13	6	13	160
GN.12004	GN 6311.4-50-M12-71-KR	50	M12	8	71	14	13	6	13	170
GN.12007	GN 6311.4-50-M12-91-KR	50	M12	8	91	14	13	6	13	180
GN.12013	GN 6311.4-50-M16-59-KR	50	M16	12	59	16	15	8	30	200
GN.12016	GN 6311.4-50-M16-69-KR	50	M16	12	69	16	15	8	30	220
GN.12019	GN 6311.4-50-M16-89-KR	50	M16	12	89	16	15	8	30	240
GN.12010	GN 6311.4-50-M16-114-KR	50	M16	12	114	16	15	8	30	270
GN.12025	GN 6311.4-60-M16-59-KR	60	M16	12	59	16	15	8	30	282
GN.12028	GN 6311.4-60-M16-69-KR	60	M16	12	69	16	15	8	30	280
GN.12031	GN 6311.4-60-M16-89-KR	60	M16	12	89	16	15	8	30	310
GN.12022	GN 6311.4-60-M16-114-KR	60	M16	12	114	16	15	8	30	340
GN.12040	GN 6311.4-60-M20-78-KR	60	M20	15.5	78	18	17	10	50	380
GN.12043	GN 6311.4-60-M20-88-KR	60	M20	15.5	88	18	17	10	50	396
GN.12034	GN 6311.4-60-M20-113-KR	60	M20	15.5	113	18	17	10	50	450
GN.12037	GN 6311.4-60-M20-138-KR	60	M20	15.5	138	18	17	10	50	440

GN 6311.4-KS

Code	Description	d1	d2	d3	l1	l4	l5	sw	Static load [KN]	
GN.12089	GN 6311.4-50-M10-37-KS	50	M10	8	37	14	13	5	13	100
GN.12092	GN 6311.4-50-M10-47-KS	50	M10	8	47	14	13	5	13	163
GN.12095	GN 6311.4-50-M10-57-KS	50	M10	8	57	14	13	5	13	178
GN.12098	GN 6311.4-50-M10-72-KS	50	M10	8	72	14	13	5	13	182
GN.11996	GN 6311.4-50-M12-41-KS	50	M12	8	41	14	13	6	13	160
GN.11999	GN 6311.4-50-M12-51-KS	50	M12	8	51	14	13	6	13	162
GN.12002	GN 6311.4-50-M12-61-KS	50	M12	8	61	14	13	6	13	168
GN.12005	GN 6311.4-50-M12-71-KS	50	M12	8	71	14	13	6	13	180
GN.12008	GN 6311.4-50-M12-91-KS	50	M12	8	91	14	13	6	13	175
GN.12014	GN 6311.4-50-M16-59-KS	50	M16	12	59	16	15	8	30	420
GN.12017	GN 6311.4-50-M16-69-KS	50	M16	12	69	16	15	8	30	220
GN.12020	GN 6311.4-50-M16-89-KS	50	M16	12	89	16	15	8	30	258
GN.12011	GN 6311.4-50-M16-114-KS	50	M16	12	114	16	15	8	30	300
GN.12026	GN 6311.4-60-M16-59-KS	60	M16	12	59	16	15	8	30	302
GN.12029	GN 6311.4-60-M16-69-KS	60	M16	12	69	16	15	8	30	314
GN.12032	GN 6311.4-60-M16-89-KS	60	M16	12	89	16	15	8	30	340
GN.12023	GN 6311.4-60-M16-114-KS	60	M16	12	114	16	15	8	30	374
GN.12041	GN 6311.4-60-M20-78-KS	60	M20	15.5	78	18	17	10	50	156
GN.12044	GN 6311.4-60-M20-88-KS	60	M20	15.5	88	18	17	10	50	516
GN.12035	GN 6311.4-60-M20-113-KS	60	M20	15.5	113	18	17	10	50	446
GN.12038	GN 6311.4-60-M20-138-KS	60	M20	15.5	138	18	17	10	50	518

