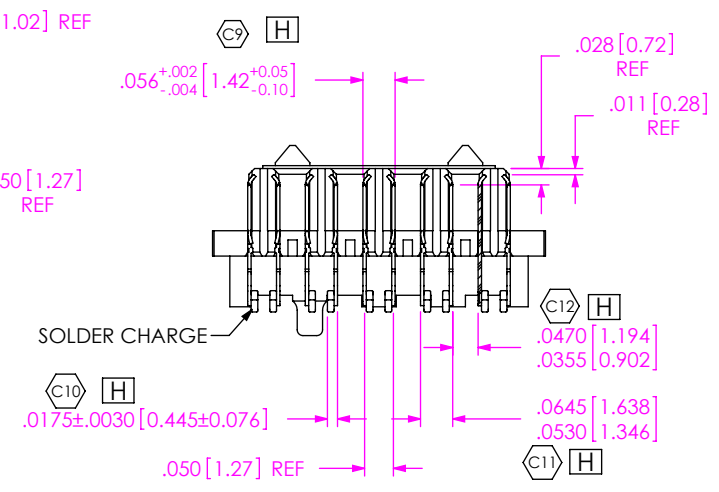
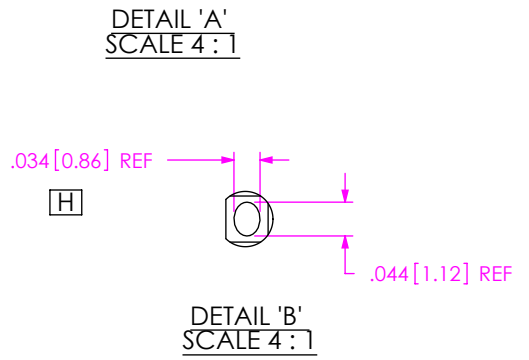
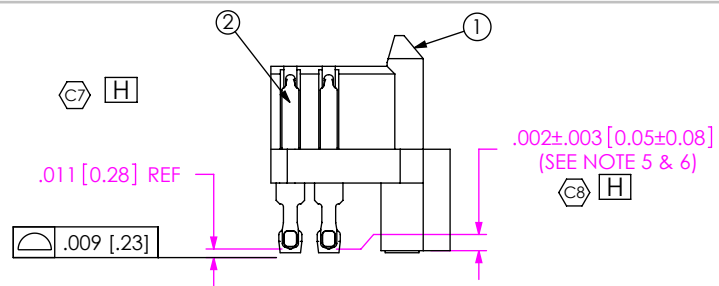
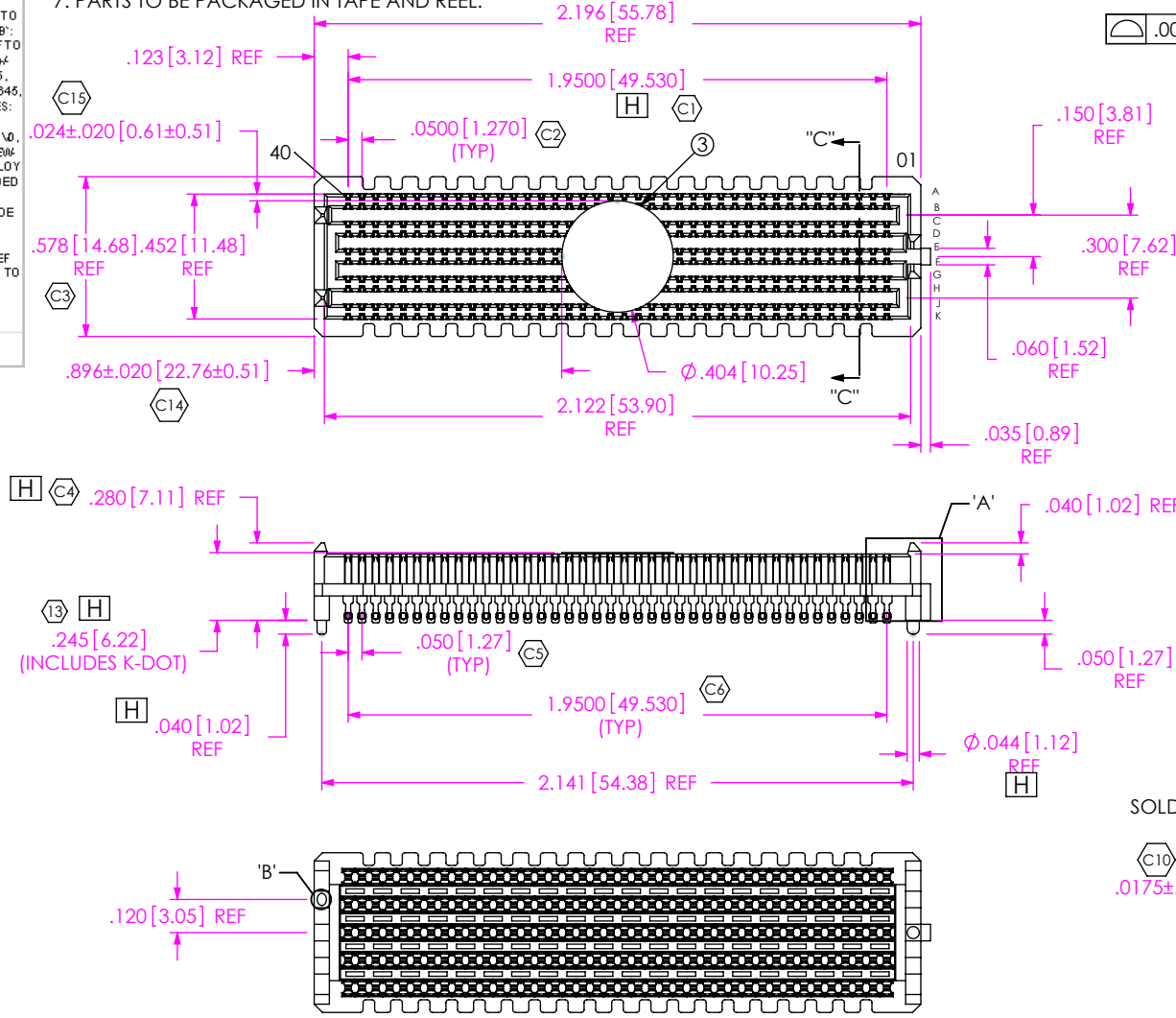


REVISION

H	EC	B RAY
8/11/2011	ECN:160408	
FRONT VIEW: CHG 240 TO 280, ADD DIM 246 & .040, ADD REF TO DIM .044, ADD CRITICAL 4, 5, 6, 13; TOP VIEW: CHG DIM 1.950 TO 1.9500, ADD CRITICAL 2, 3, 14, 15; DETAIL 'A': CHG .0020 TO .002 +/- .003 & .004 TO .011, ADD CRITICAL 7, 8; DETAIL 'B': CHG .APIN TO AN DVAL, ADD REF TO .034; SECTION "C"- "C": CHG .056 +/- .003 TO .052 - .058 & D 10 TO D 175, ADD DIM D355 - D470 & D530 - D645, ADD CRITICAL 9, 10, 11, 12; NOTES: ADD NOTES 4, 5 & 6; BOM: ITEM 1: CHG VECIRA E130 TO LCP UL94 V0, ITEM 2: CHG T-1M36-03 S-S TO NEW SUB-T-1M36-03 S-S-1, BRUSH ALLOY 390 HT TO COPPER ALLOY / LEADED SOLDER, DEL ITEM 3 AND RENUMBER, ITEM 4: CHG POLYIMIDE FILM TO CONDUCTIVE POLYMER; SHT 2: CHG .050 TO .0500, ADD .0055, ADD REF HT TO .050, DEL REF FROM DIM 2.196; SHT 3: CHG .050 TO .0500; SHT 4: CHG FONT SIZE OF SECTION "D"- "D" TO D8.		

NOTES:

1. VITA 57 CONNECTOR.
2. (C) REPRESENTS A CRITICAL DIMENSION.
3. MINIMUM PUSHOUT FORCE: .75 LBS.
4. ATTACH LABEL "SEAX-0001" TO EACH TAPE & REEL PACKAGE.
5. MAXIMUM ROW TO ROW VARIATION .003[0.08].
6. DIMENSION C8 MUST BE MEASURED IN THE FOUR OUTSIDE CORNERS USING INSPECTION FIXTURE AT-1817-836-1, USE CO-AU-WI-2003-M FOR PROCESS.
7. PARTS TO BE PACKAGED IN TAPE AND REEL.



DATE: _____
 COMPANY: _____
 CUSTOMER SIGNATURE _____
 PRINTED NAME _____
 PHONE NO: _____
 FAX NO: _____

ITEM NO.	PART NUMBER	QUANTITY	(H) MATERIAL
1	SEAM-40-03.5-S-10-A	1.0000	LCP, UL 94 V0, COLOR: BLACK
2	NEW-SUB-T-1M36-03.5-S-1	400.00	COPPER ALLOY / LEADED SOLDER
3	K-DOT-.404-.500-.005	1.0000	POLYIMIDE FILM (KAPTON)
4	CT-SEAM033MS	1.0000	CONDUCTIVE POLYMER

UNLESS OTHERWISE SPECIFIED, DIMENSIONS ARE IN INCHES.
 TOLERANCES ARE:
 DECIMALS ANGLES
 .XX: ±.01 [.3] 2°
 .XXX: ±.005 [.13]
 .XXXX: ±.0020 [.051]

PROPRIETARY NOTE
 THIS DOCUMENT CONTAINS INFORMATION CONFIDENTIAL AND PROPRIETARY TO SAMTEC, INC. AND SHALL NOT BE REPRODUCED OR TRANSFERRED TO OTHER DOCUMENTS OR DISCLOSED TO OTHERS OR USED FOR ANY PURPOSE OTHER THAN THAT WHICH IT WAS OBTAINED WITHOUT THE EXPRESSED WRITTEN CONSENT OF SAMTEC, INC.

DO NOT SCALE DRAWING SHEET SCALE: 3:2

PLATING:
 CONTACT AREA: .000030 GOLD OVER .000050 NICKEL
 REMAINDER: .000200 REF TIN OVER .000050 NICKEL

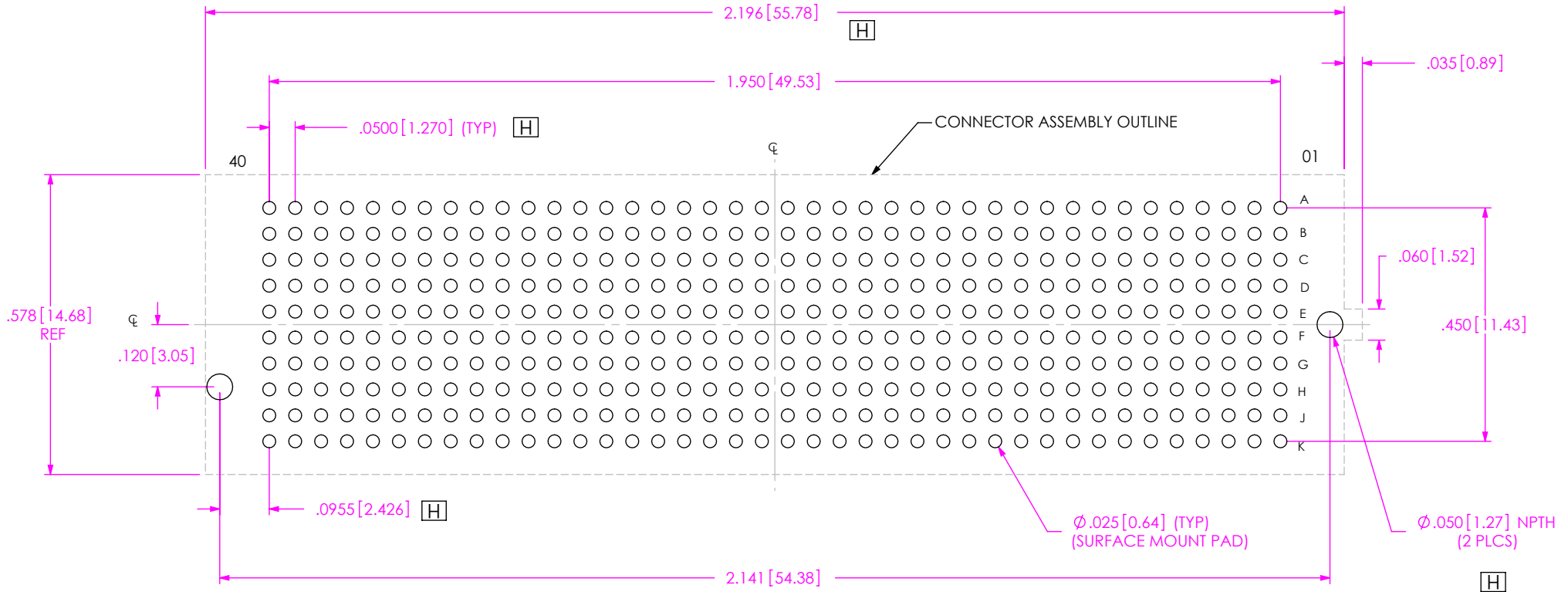
samtec

520 PARK EAST BLVD, NEW ALBANY, IN 47150
 PHONE: 812-944-6733 FAX: 812-948-5047
 e-Mail: info@SAMTEC.com code: 55322

DESCRIPTION:
 .050 PITCH TERMINAL ARRAY ASSEMBLY

DWG. NO.
ASP-134487-01

BY: G. PURVIS 11/02/2007 SHEET 1 OF 4



ALL DIMENSIONS ARE SYMMETRIC ABOUT THE CENTERLINE.

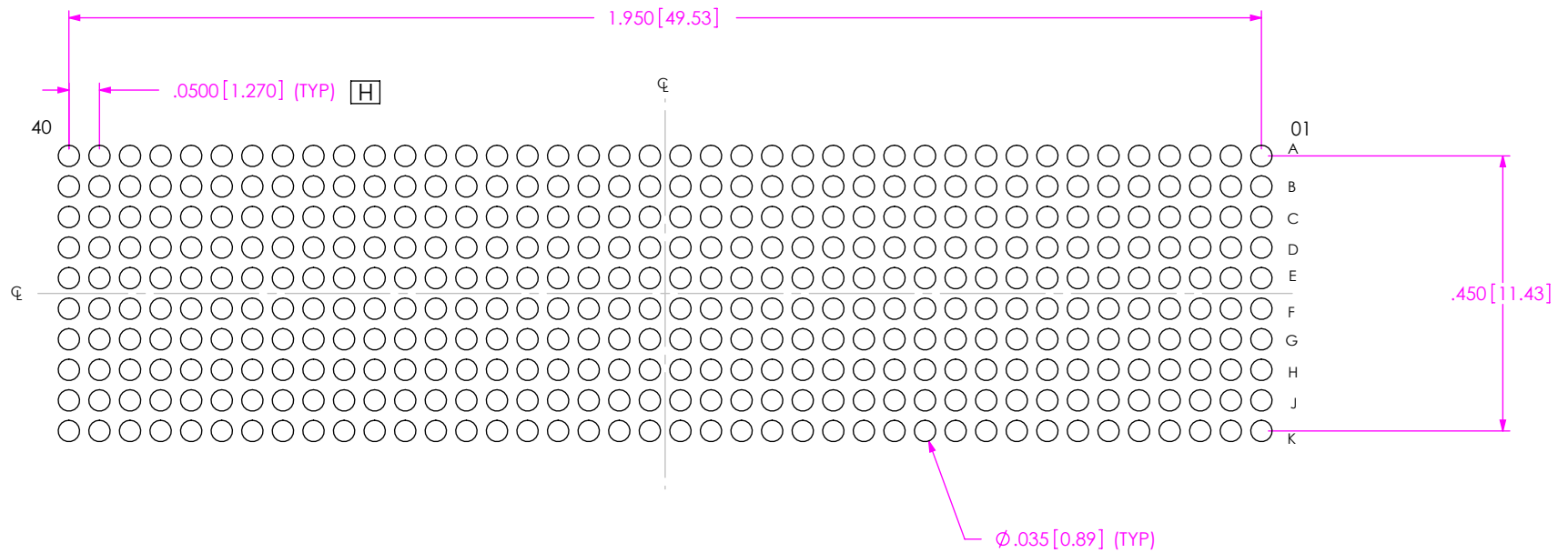
PROPRIETARY NOTE

THIS DOCUMENT CONTAINS INFORMATION CONFIDENTIAL AND PROPRIETARY TO SAMTEC, INC. AND SHALL NOT BE REPRODUCED OR TRANSFERRED TO OTHER DOCUMENTS OR DISCLOSED TO OTHERS OR USED FOR ANY PURPOSE OTHER THAN THAT WHICH IT WAS OBTAINED WITHOUT THE EXPRESSED WRITTEN CONSENT OF SAMTEC, INC.



520 PARK EAST BLVD, NEW ALBANY, IN 47150
 PHONE: 812-944-6733 FAX: 812-948-5047
 e-Mail: info@SAMTEC.com code: 55322

NOTES:
STENCIL TO BE .0060[.152] THICK.



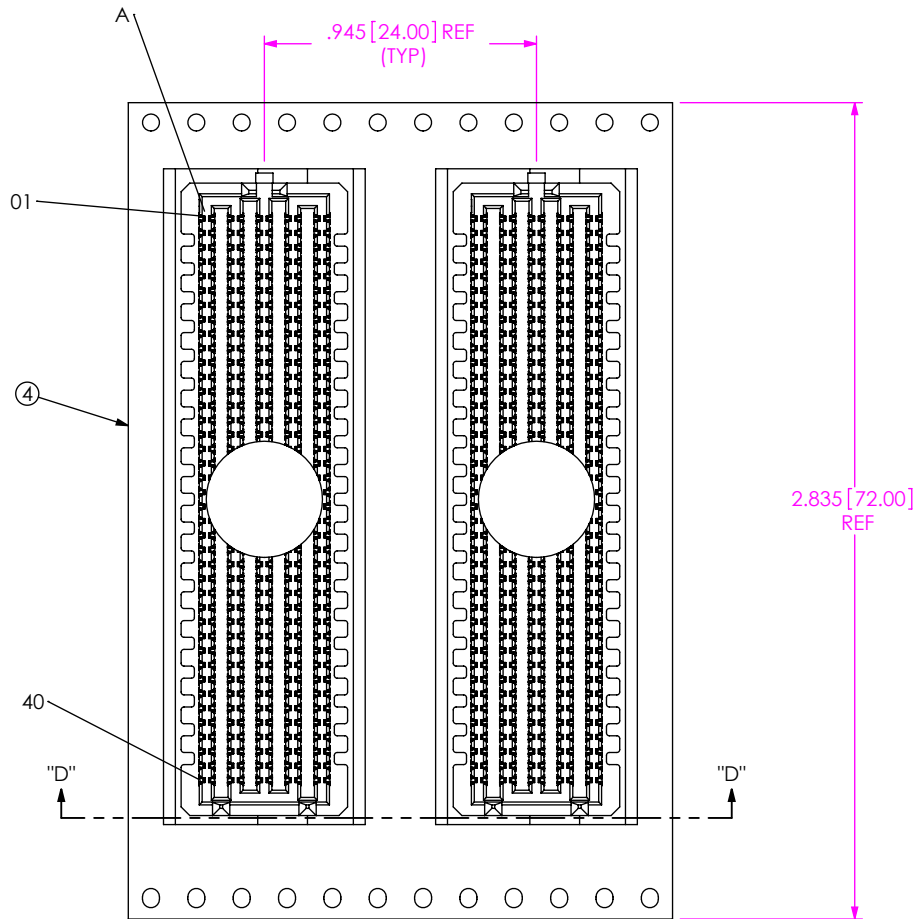
ALL DIMENSIONS ARE SYMMETRIC ABOUT THE CENTERLINE.

PROPRIETARY NOTE

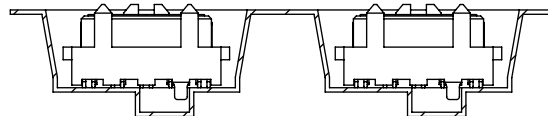
THIS DOCUMENT CONTAINS INFORMATION
CONFIDENTIAL AND PROPRIETARY TO
SAMTEC, INC. AND SHALL NOT BE REPRODUCED
OR TRANSFERRED TO OTHER DOCUMENTS OR
DISCLOSED TO OTHERS OR USED FOR ANY
PURPOSE OTHER THAN THAT WHICH IT WAS
OBTAINED WITHOUT THE EXPRESSED WRITTEN
CONSENT OF SAMTEC, INC.



520 PARK EAST BLVD, NEW ALBANY, IN 47150
PHONE: 812-944-6733 FAX: 812-948-5047
e-Mail: info@SAMTEC.com code: 55322



USER DIRECTION OF UN-REELING →
POCKET NOT DETAILED



[H]

SECTION "D"- "D"
PACKAGING VIEW

PROPRIETARY NOTE

THIS DOCUMENT CONTAINS INFORMATION
CONFIDENTIAL AND PROPRIETARY TO
SAMTEC, INC. AND SHALL NOT BE REPRODUCED
OR TRANSFERRED TO OTHER DOCUMENTS OR
DISCLOSED TO OTHERS OR USED FOR ANY
PURPOSE OTHER THAN THAT WHICH IT WAS
OBTAINED WITHOUT THE EXPRESSED WRITTEN
CONSENT OF SAMTEC, INC.

SHEET SCALE: 1:0.666667



520 PARK EAST BLVD, NEW ALBANY, IN 47150
PHONE: 812-944-6733 FAX: 812-948-5047
e-Mail: info@SAMTEC.com code: 55322

DESCRIPTION:
.050 PITCH TERMINAL ARRAY ASSEMBLY

DWG. NO.
ASP-134487-01

BY: G. PURVIS 11/02/2007 SHEET 4 OF 4