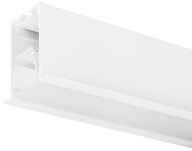


## Mini Continuum II - Direct - Trim

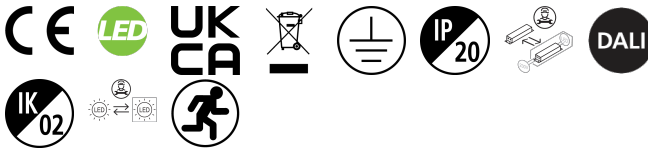
### MC2 TRIM 2.4M 3K DALIEM WHT OPAL

### 2093136



#### Product features

- 2093136 MC2 TRIM 2.4M 3K DALIEM WHT OPAL Continuous lines of LED light, white RAL 9016, direct distribution, trim detail for plasterboard ceilings, suitable for recessed installation either horizontally or vertically, various accessories available, compact and minimalist design based on the Golden Mean, ideal for offices, meeting rooms, corridors, education facilities, museums and libraries, extruded aluminium body, diffuser: opal, colour temperature: 3000K warm white, total system power: 45W, total fixture output: 4400lm, emergency output: 121lm, luminaire efficacy: 98lm/W, LOR: 100%, colour rendering: Ra >80, LED Chromacity: 3 step MacAdam ellipse, lifespan: 66,000 hours L90B10, IR/UV free light source without heat radiation, operating voltage: 220-240V / 50-60Hz, drive current: 800mA, electronic driver, DALI dimmable, integral emergency: 3 hour maintained, electrical protection: CLASS I, IP20, suitable for internal environment only.



#### PRODUCT OVERVIEW

Product name	MC2 TRIM 2.4M 3K DALIEM WHT OPAL
Technology	LED
Housing	Aluminium
Mount	Ceiling recessed mounting
Environment	Internal
General application	Education, Hospitality, Office, Retail
ETIM Class	EC002892
Warranty	5 years
Fixture luminous flux (lm)	4400
Luminaire efficacy (lm/W)	98
LOR (%)	100
Colour temperature (K)	3000
Light colour	Warm White
CRI (Ra)	80
Colour Variation Initial (SDCM)	SDCM3
Glare control	< 17
Photobiological Risk Group	RG0
Luminous flux (emergency) (lm)	121
Luminous flux (emergency) (lm)	121
Total power consumption (W)	45
Electrical protection	Class I
Control gear type	Electronic ballast
Dimming method	DALI
Minimum dimming level (%)	1
Housing colour	White
IP rating	IP20
IK rating	IK02
Product EAN number	5025768931361

## Mini Continuum II - Direct - Trim

MC2 TRIM 2.4M 3K DALIEM WHT OPAL  
2093136

### DATA TABLE

#### General data

<b>Product name</b>	MC2 TRIM 2.4M 3K DALIEM WHT OPAL
<b>Technology</b>	LED
<b>Housing</b>	Aluminium
<b>Mount</b>	Ceiling recessed mounting
<b>Environment</b>	Internal
<b>General application</b>	Education, Hospitality, Office, Retail
<b>Performance ambient temperature Tq (°C)</b>	25
<b>ETIM Class</b>	EC002892
<b>Warranty</b>	5 years

#### Optical data

<b>Fixture luminous flux (lm)</b>	4400
<b>Luminaire efficacy (lm/W)</b>	98
<b>LOR (%)</b>	100
<b>Colour temperature (K)</b>	3000
<b>Light colour</b>	Warm White
<b>CRI (Ra)</b>	80
<b>Colour Variation Initial (SDCM)</b>	SDCM3
<b>Adjustable chromaticity</b>	N
<b>Glare control</b>	< 17
<b>Photobiological Risk Group</b>	RG0
<b>Luminous flux (emergency) (lm)</b>	121
<b>Luminous flux (emergency) (lm)</b>	121
<b>Emergency duration (h)</b>	3

#### Electrical data

<b>Total power consumption (W)</b>	45
<b>Mains voltage (V)</b>	220-240V
<b>Lamp power factor</b>	0.98
<b>Electrical protection</b>	Class I
<b>Control gear type</b>	Electronic ballast
<b>Transformer required</b>	Yes
<b>Dimming method</b>	DALI
<b>Minimum dimming level (%)</b>	1
<b>Drive current (mA)</b>	800
<b>Inrush Current (A)</b>	40
<b>Inrush Duration (µs)</b>	178
<b>Energy Efficiency Class (A-&gt;G) of contained light source</b>	C
<b>Max. Luminaires per 10A C Breaker</b>	15
<b>Max. Luminaires per 13A C Breaker</b>	20
<b>Max. Luminaires per 16A C Breaker</b>	23
<b>Max. Luminaires per 20A C Breaker</b>	30
<b>Max. Luminaires per 10A B Breaker</b>	9
<b>Max. Luminaires per 13A B Breaker</b>	12

## Mini Continuum II - Direct - Trim

### MC2 TRIM 2.4M 3K DALIEM WHT OPAL

### 2093136

Max. Luminaires per 16A B Breaker	14
Max. Luminaires per 20A B Breaker	18

#### Lifetime data

Lifespan L70 B50	120000
Lifespan L80 B20	120000
Lifespan L90 B10	66000

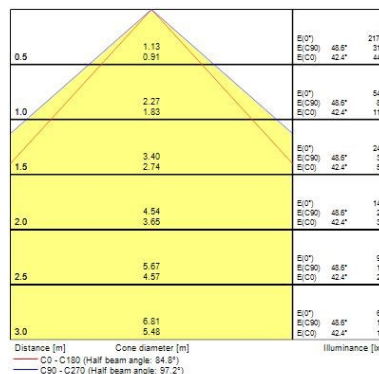
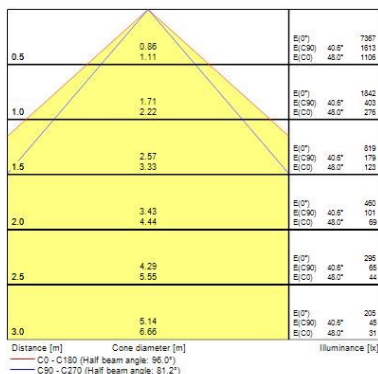
#### Physical data

Housing colour	White
IP rating	IP20
IK rating	IK02
Diffuser finish	Opal
Diffuser material	PC Polycarbonate
Nominal Product Length (mm)	2400
Nominal Product Width (mm)	80
Nominal Product Height (mm)	86
Cutout Dimensions (W x L in mm or Diameter in mm)	60 x 2400
Weight (kg)	5.9
Recessed Depth (mm)	136

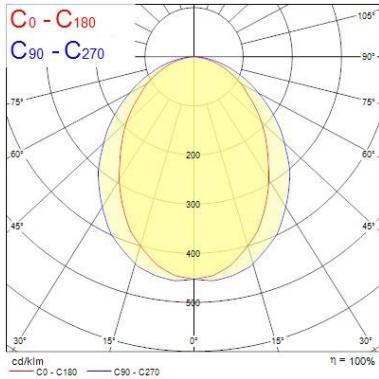
#### Packaging

Single packaging type	Carton
Product EAN number	5025768931361
Packaging single length / height (cm)	245.0
Packaging single width (cm)	9.0
Packaging single depth (cm)	10.0
DUN14 (outer)	05025768931361
Units per outer package	1
Packaging outer length / height (cm)	245.0
Packaging outer width (cm)	9.0
Packaging outer depth (cm)	10.0

## PHOTOMETRY



## Mini Continuum II - Direct - Trim MC2 TRIM 2.4M 3K DALIEM WHT OPAL 2093136

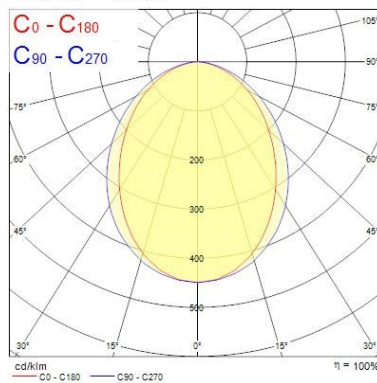
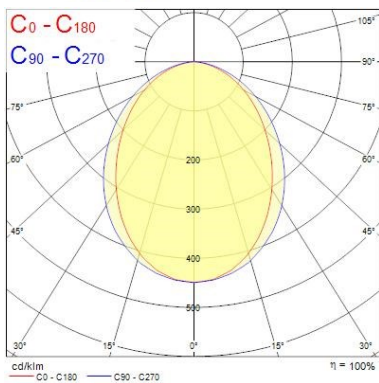
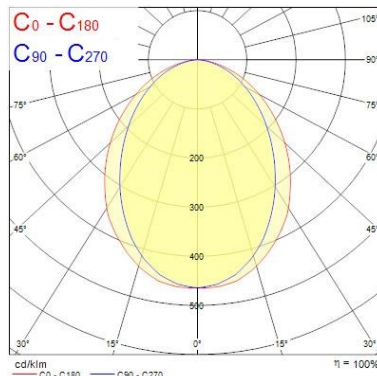


Distance [m]	Cone diameter [m]	E(0°)	E(C90)	E(C0)	Illuminance [lx]
0.5	1.13 0.91	792	48.8° 119	42.4° 182	
1.0	2.27 1.83	198	48.8° 28	42.4° 40	
1.5	3.40 2.74	88	48.8° 13	42.4° 18	
2.0	4.54 3.65	49	48.8° 7	42.4° 10	
2.5	5.67 4.57	31	48.8° 4	42.4° 6	
3.0	6.81 5.48	20	48.8° 3	42.4° 4	

Distance [m] Cone diameter [m] Illuminance [lx]  
— C0 - C180 (Half beam angle: 84.8°)  
— C90 - C270 (Half beam angle: 97.2°)

Distance [m]	Cone diameter [m]	E(0°)	E(C90)	E(C0)	Illuminance [lx]
0.5	1.19 0.85	191	60.0° 26	40.3° 44	
1.0	2.38 1.70	49	60.0° 7	40.3° 11	
1.5	3.58 2.54	22	60.0° 3	40.3° 5	
2.0	4.77 3.39	12	60.0° 2	40.3° 3	
2.5	5.96 4.24	8	60.0° 1	40.3° 2	
3.0	7.15 5.09	5	60.0° 1	40.3° 1	

Distance [m] Cone diameter [m] Illuminance [lx]  
— C0 - C180 (Half beam angle: 80.0°)  
— C90 - C270 (Half beam angle: 100.0°)



### TECHNICAL DRAWINGS

