

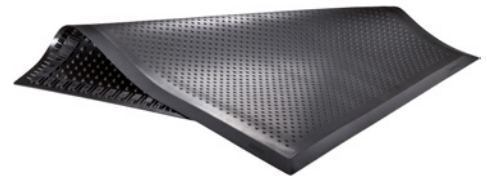
Workplace mat made of nitrile rubber, oil-resistant and flame-retardant

Diamond structure, height 20 mm

ergolastec soft footing.

Application:

The modern and ergonomic workplace mats protect the joints and spine, prevent slipping and thus ensure optimum sure-footedness in the workplace. The mats are ideal for walking and standing workplaces such as at workbenches, conveyor belts, assembly tables and turning and milling machines. The additional flame retardant effect means that they can be used in workplaces with weld splatter and flying sparks without problems.



Advantage:

- Due to the puzzle system, any surface can be laid out
- The easy solution for increased safety, health, comfort and productivity
- firm grip for secure footing and high position stability
- reduced muscular fatigue caused by increased physical activity
- prevention of adverse effects on health through heat insulation

Art. no.	50225 761
Surface structure	Diamond / closed
Material	Nitrile rubber
Length	1350 mm
Width	948 mm
Material thickness	20 mm
Mat design	Individual mat, Puzzle piece, type B
Resistance against	Oil, Acid, Fats, Petrol, Coolant
Min. temperature resistance	-35 °C
Max. temperature resistance	95 °C
Suitable for wet areas	Yes
Antistatic	No
Anti-fatigue	Yes
Non-slip	Yes
Compliant with REACH	Yes
Colour	Black