

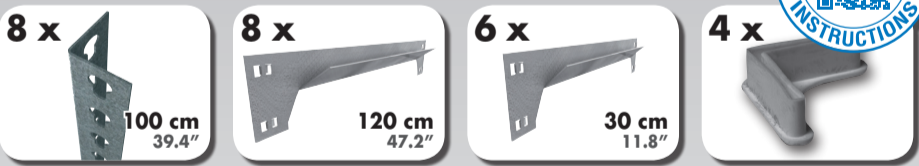
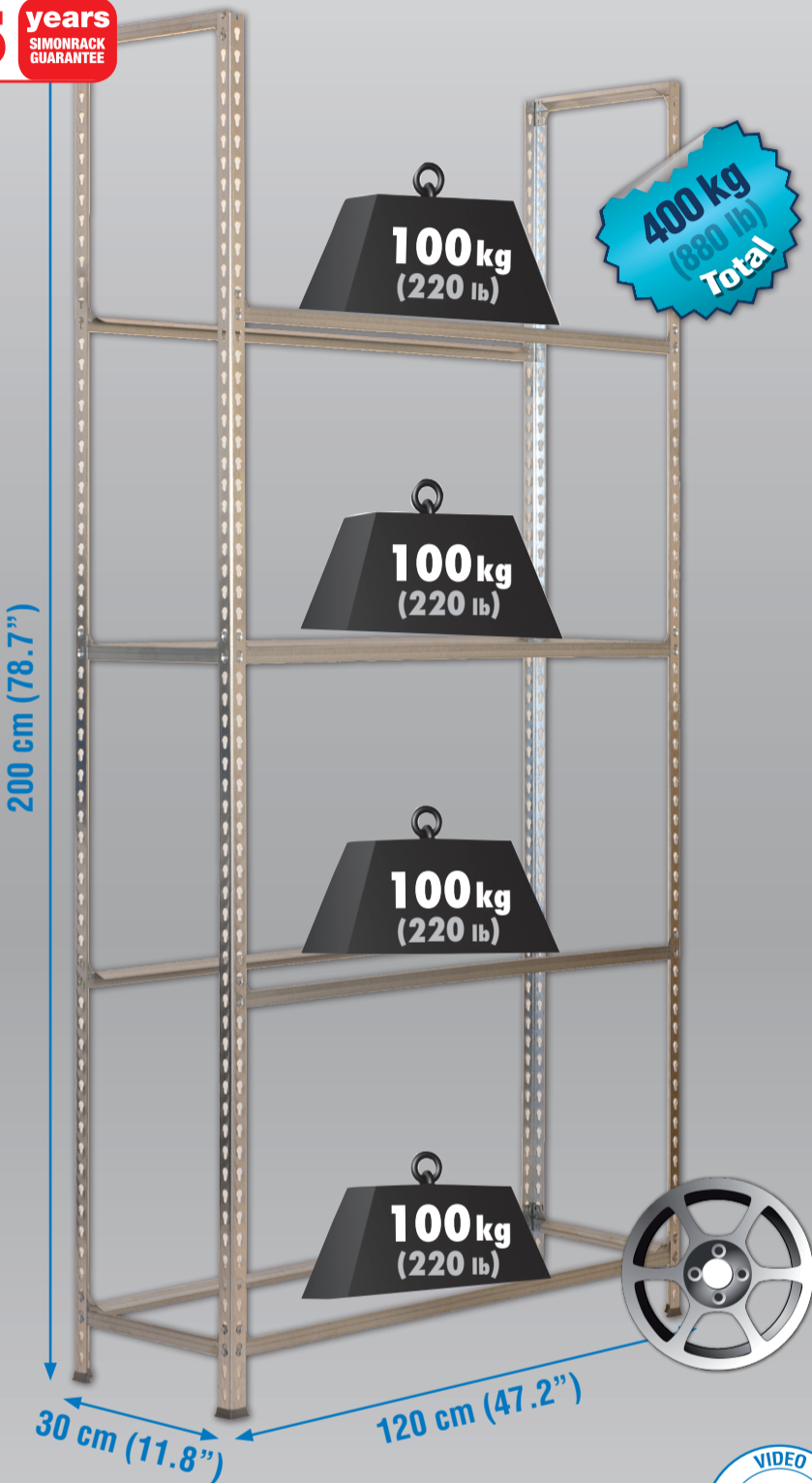
# 200 x 120 x 30 cm\*

## 78.7" x 47.2" x 11.8"

### AUTOCLICK LLANTAS MEGAPLUS 4-300



**5 years**  
SIMONRACK  
GUARANTEE



\*MEDIDAS EN USO: 1979 x 1211 x 310 mm  
USED MEASUREMENTS: 77.91" x 47.68" x 12.20"



ESTANTERIAS SIMON S.L. B.50.556.463  
PG. ALFAMEN C/ POLIGONO C, N°3  
ALFAMEN (ZARAGOZA)

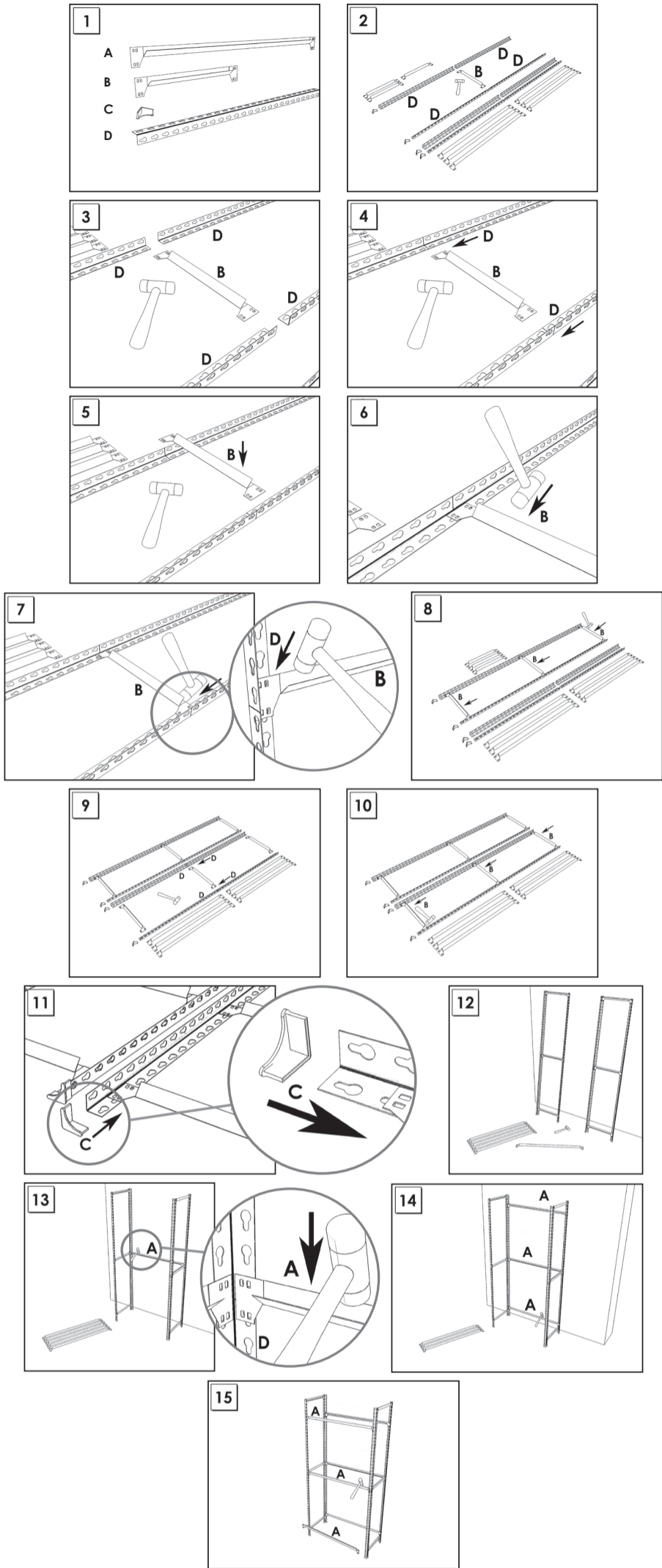


www.simonrack.com



INSTRUCTIONS

# STANDARD MOUNTING



On-line instructions: [www.instructionsrack.com/autoclick](http://www.instructionsrack.com/autoclick)

[www.simonrack.com](http://www.simonrack.com) • [www.simonrack.com](http://www.simonrack.com) • [www.simonrack.com](http://www.simonrack.com) • [www.simonrack.com](http://www.simonrack.com)

## SIMONCLASSIC

**BOLTS SYSTEM**

Up to: **150 Kg**  
(331 lb)  
Kg/Shelf  
Uniformly Distributed Load



## SIMONCLICK

**NO BOLTS SYSTEM**

Up to: **400 Kg**  
(882 lb)  
Kg/Shelf  
Uniformly Distributed Load



## SIMONOFFICE

**NO BOLTS SYSTEM**

Up to: **275 Kg**  
(606 lb)  
Kg/Shelf  
Uniformly Distributed Load



## SIMONTALLER

**NO BOLTS SYSTEM**

Up to: **700 Kg**  
(1543 lb)  
Kg/Shelf  
Uniformly Distributed Load



## BANCOS DE TRABAJO

Up to: **800 Kg**  
(1764 lb)  
Kg/Shelf  
Uniformly Distributed Load



## ALTILLOS Y PASILLOS ELEVADOS



## SIMONHOME

Up to: **150 Kg**  
(331 lb)  
Kg/Shelf  
Uniformly Distributed Load



## TAQUILLAS



## SIMONINOX

**NO BOLTS SYSTEM**

Up to: **900 Kg**  
(1984 lb)  
Kg/Shelf  
Uniformly Distributed Load



## SIMONTITÁN

**NO BOLTS SYSTEM**

Up to: **900 Kg**  
(1984 lb)  
Kg/Shelf  
Uniformly Distributed Load



## SIMONPALET

Up to: **4500 Kg**  
(9921 lb)  
Kg/Shelf  
Uniformly Distributed Load



## SIMONLEVER

