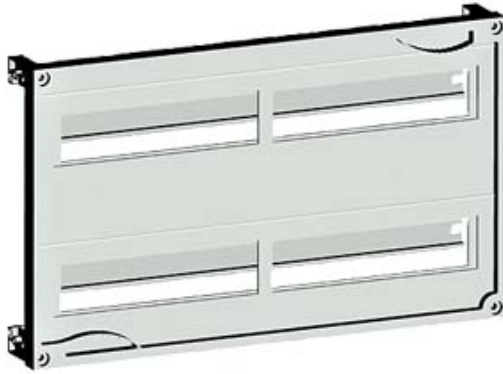





ALPHA 160 DIN, ASSEMBLY KIT F. MODULAR  
 INSTALLATION DEVICES, TIER SPACING 125MM  
 H=300 W=250



## Accessories

accessories		others			
General Product Approval		Declaration of Conformity	Test Certificates		
 GOST	<a href="#">other</a>		 EG-Konf.	<a href="#">Type Test Certificates/Test Report</a>	<a href="#">Special Test Certificate</a>

## Test Certificates

[other](#)

## Further information

**Information- and Downloadcenter (Catalogs, Brochures,...)**  
<http://www.siemens.com/lowvoltage/catalogs>

**Industry Mall (Online ordering system)**  
<https://eb.automation.siemens.com/mall/en/WW/Catalog/Product/8GK43012KK11>

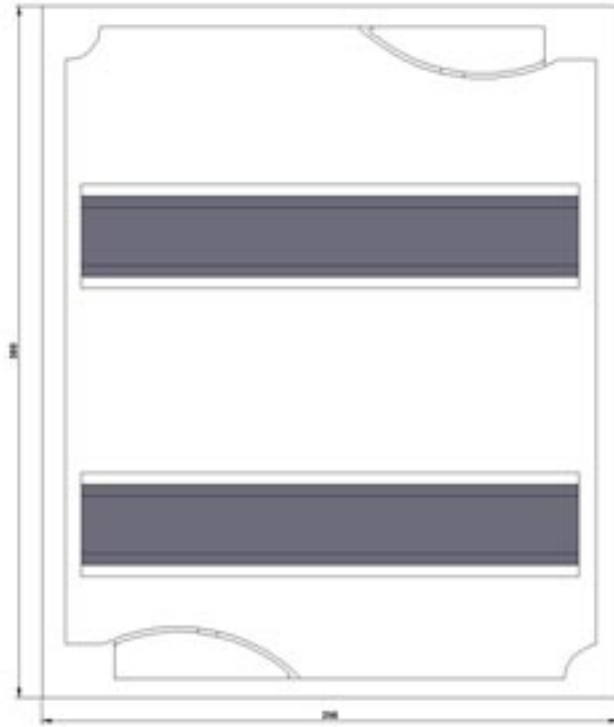
**Service&Support (Manuals, Certificates, Characteristics, FAQs,...)**  
<http://support.automation.siemens.com/WW/view/en/8GK43012KK11/all>

**Image database (product images, 2D dimension drawings, 3D models, device circuit diagrams, ...)**  
[http://www.automation.siemens.com/bilddb/cax\\_en.aspx?mlfb=8GK43012KK11](http://www.automation.siemens.com/bilddb/cax_en.aspx?mlfb=8GK43012KK11)

**CAX-Online-Generator**  
<http://www.siemens.com/cax>

**Tender specifications**

<http://ausschreibungstexte.siemens.com/tiplv>



**last modified:**

11.03.2015