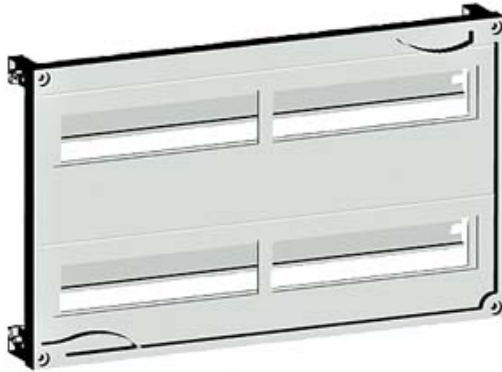





ALPHA 400/630 DIN, KIT F. INSTALL. MOUNTING
 DEVICE WITH ROW DISTANCE 125 MM H=300
 W=500



Accessories

| accessories | | others |
|---|--|--|
| General Product Approval | Declaration of Conformity | Test Certificates |
|  GOST |  EAC | other  EG-Konf. |
| | | Type Test Certificates/Test Report Special Test Certificate |

Further information

- Information- and Downloadcenter (Catalogs, Brochures,...)**
<http://www.siemens.com/lowvoltage/catalogs>
- Industry Mall (Online ordering system)**
<https://eb.automation.siemens.com/mall/en/WW/Catalog/Product/8GK43012KK22>
- Service&Support (Manuals, Certificates, Characteristics, FAQs,...)**
<http://support.automation.siemens.com/WW/view/en/8GK43012KK22/all>
- Image database (product images, 2D dimension drawings, 3D models, device circuit diagrams, ...)**
http://www.automation.siemens.com/bilddb/cax_en.aspx?mlfb=8GK43012KK22
- CAX-Online-Generator**
<http://www.siemens.com/cax>
- Tender specifications**
<http://ausschreibungstexte.siemens.com/tiplv>

last modified: 11.03.2015